

CERTIFICATE OF LOCATION OF GOVERNMENT CORNER

NORTH QUARTER Corner of Section 21, Township 39, Range 24, 4TH P.M.

STATE OF MINNESOTA, County of KANABEC

At the corner location shown on the sketch:
 SET A 1/2" X 4' PIPE WITH ALUMINUM CAP BY WOOD FENCE
 POST IN SWAMP

Kanabec County U.S. Survey Feet Coordinates
 NAD 1983, HARN 1996 Adjustment
 Obtained by RTK GPS Observation

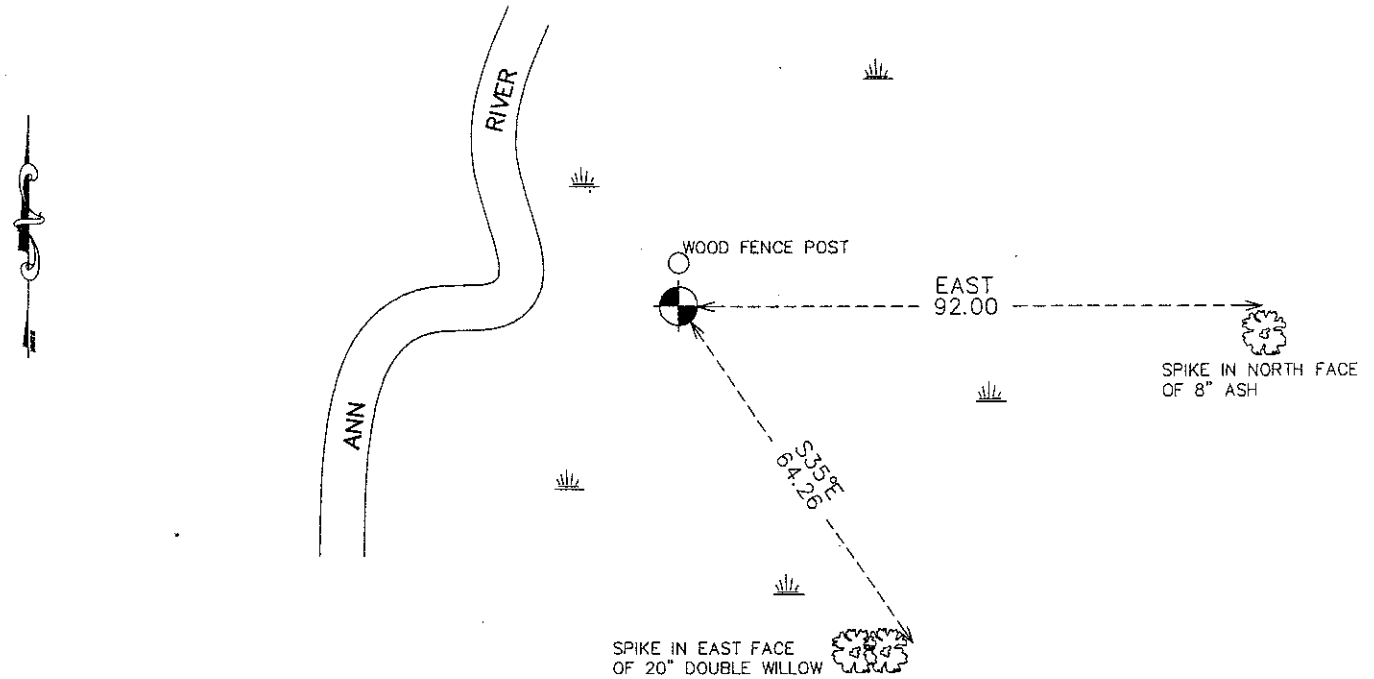
Northing= 138588.08

Easting= 353950.97

Note: NAD 1983, HARN 1996 Adjustment
 coordinates are NOT compatible with
 NAD 1983 coordinates

Note: 1 Meter=3937/1200 U.S. Survey Feet

SKETCH OF REFERENCE TIES



Statement of evidence relative to this corner location is on back of page.

I hereby certify that this document and the data contained herein was prepared by me or under my direct supervision.

Ernest Blum
 Signature

12-21-2010
 Date

Registration No. 9808

Land Surveyor, Professional Engineer

County Surveyor, County Engineer

OFFICE OF THE COUNTY RECORDER

County of _____

I hereby certify that this document was filed in the County Recorder's office at _____ M. on the _____ day of _____ A.D., 20 _____

_____ day of _____ A.D., 20 _____

County Recorder _____

BY _____ Deputy

DOCUMENT NO. _____

N1/4 CORNER, SEC. 21, T39, R24

STATEMENT OF EVIDENCE

THE ORIGINAL CORNER POST WAS SET BY DEPUTY SURVEYOR SILAS BARNARD ON OCT. 2, 1855 AND 2 BEARING TREES ESTABLISHED AS FOLLOWS:

12" ELM BEARING N89°W @ 278 LINKS

15" ELM BEARING S74°W @ 230 LINKS

NO VISIBLE EVIDENCE REMAINS TODAY FOR THE CORNER OR BEARING TREES.

ON PAGE 12 OF SURVEY BOOK 2 OF 2 IN KANABEC COUNTY OFFICES, JOHN NELSON RECORDED A SURVEY OF SECS. 15, 16, 21 AND 22 WHICH WAS DONE ON MAY 5-16, 1902. NO CORNER WAS FOUND OR SET AT THIS LOCATION.

THIS CORNER FALLS IN THE RIVER BOTTOM, BEING SWAMP AND COMMON OWNERSHIP ON ALL SIDES.

ON NOV. 23, 2010 E.G. RUD AND SONS, INC. SET A 1/2" IRON PIPE WITH AN ALUMINUM CAP EQUIDISTANT FROM THE NE AND NW CORNERS OF SEC. 21, TOOK TIES AND KANABEC COUNTY COORDINATES WERE ESTABLISHED ON THIS POSITION.