

# CERTIFICATE OF LOCATION OF GOVERNMENT CORNER

EAST QUARTER Corner of Section 20, Township 39, Range 24, 4TH P.M.

STATE OF MINNESOTA, County of KANABEC

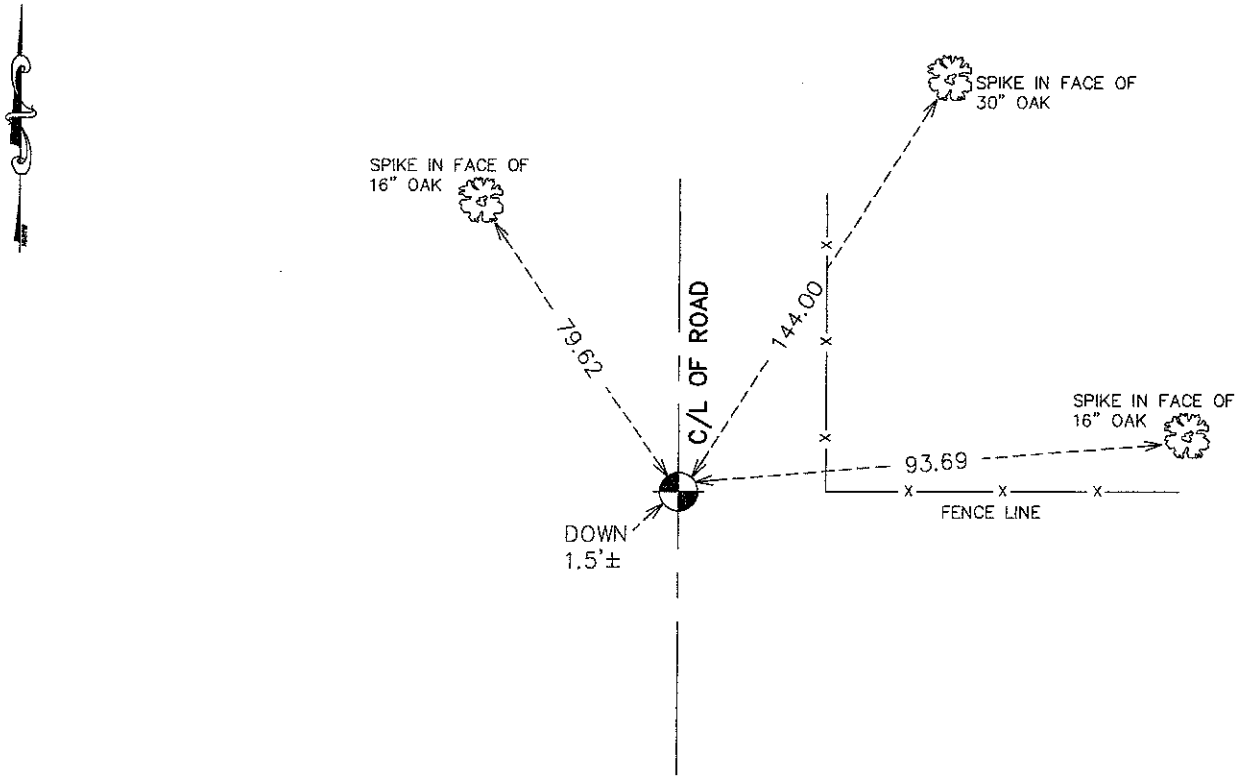
At the corner location shown on the sketch:  
 FOUND CAST ALUMINUM MONUMENT

Kanabec County U.S. Survey Feet Coordinates  
 NAD 1983, HARN 1996 Adjustment  
 Obtained by RTK GPS Observation

Northing= 145301.50  
 Easting= 385722.09

Note: NAD 1983, HARN 1996 Adjustment  
 coordinates are NOT compatible with  
 NAD 1983 coordinates  
 Note: 1 Meter=3937/1200 U.S. Survey Feet

## SKETCH OF REFERENCE TIES



Statement of evidence relative to this corner location is on back of page.

I hereby certify that this document and the data contained herein was prepared by me or under my direct supervision.

*Ernest Blund* 11-26-2010  
 Signature Date

Registration No. 9808

Land Surveyor,  Professional Engineer  
 County Surveyor,  County Engineer

### OFFICE OF THE COUNTY RECORDER

County of \_\_\_\_\_

I hereby certify that this document was filed in the County Recorder's office at \_\_\_\_\_ M. on the \_\_\_\_\_ day of \_\_\_\_\_ A.D., 20\_\_\_\_

County Recorder \_\_\_\_\_

BY \_\_\_\_\_ Deputy

**DOCUMENT NO.** \_\_\_\_\_

E1/4 CORNER, SEC. 31, T38, R25

**STATEMENT OF EVIDENCE**

**ALL OF THE ORIGINAL BEARING TREES ARE GONE.**

**ON AUG. 10, 1976, M.B. RUDE MADE AN EXCAVATION 15 FEET WIDE EAST-WEST AND 40 FEET LONG NORTH-SOUTH IN THE CENTER OF NORTH-SOUTH ROAD AND FENCE LINE EAST, 6 FEET DEEP WITH COUNTY BACKHOE. NO EVIDENCE OF ORIGINAL CORNER WAS FOUND IN EXCAVATION.**

**M.B. RUDE MEASURED FROM THE SW CORNER TO THE NW CORNER OF SEC. 21 AND SET A CAST ALUMINUM MONUMENT ON LINE AND SPLIT.**

**THIS LOCATION FITS THE CENTER OF THE ROAD AND FENCE LINE EAST. IT IS THE BEST AVAILABLE EVIDENCE OF THE ORIGINAL CORNER LOCATION.**

**ON MAY 25, 2010, E.G. RUD AND SONS, INC. FOUND THIS MONUMENT DOWN 18" AND ESTABLISHED KANABEC COUNTY COORDINATES ON THIS POSITION. THIS FIT WITHIN 0.12 FEET OF BEING ON LINE AND SPLIT FROM THE NE TO THE SE CORNER OF SEC. 20.**