

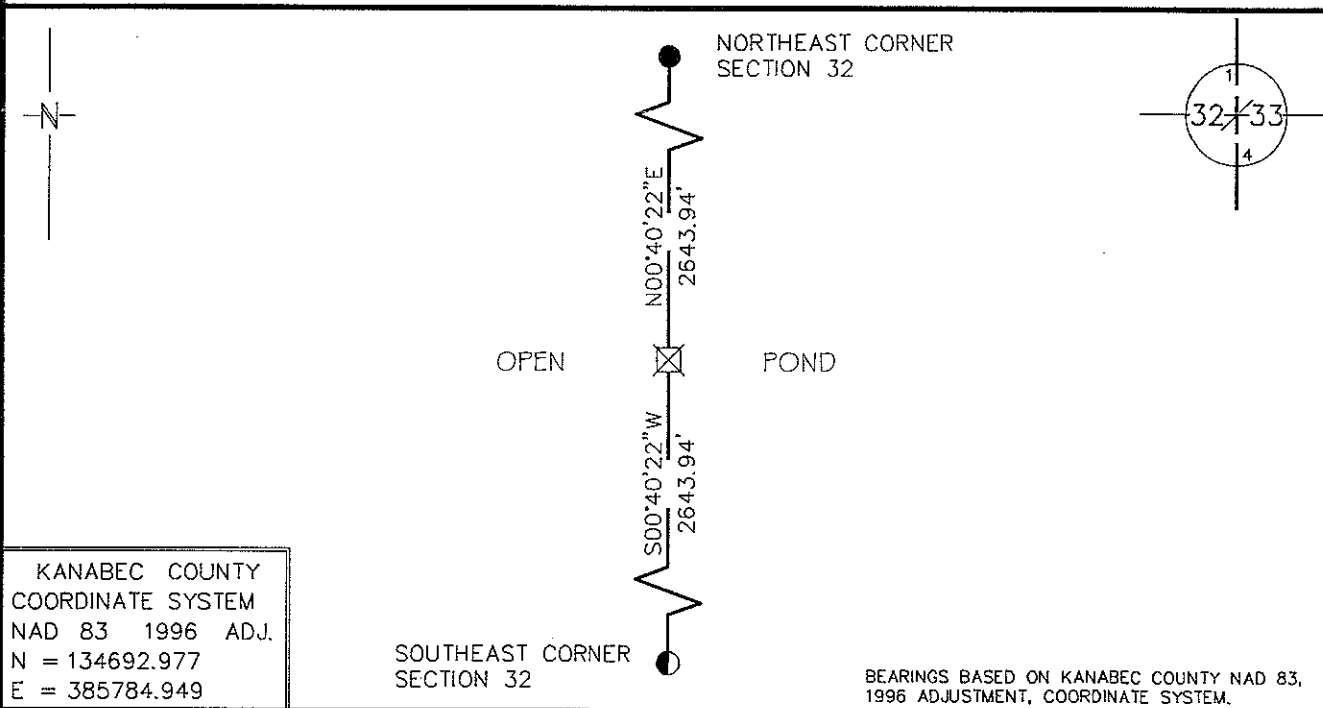
Index No. X-9

# CERTIFICATE OF LOCATION OF GOVERNMENT CORNER

EAST QUARTER Corner of Section 32, Township 39 N, Range 24 W  
4TH Principal Meridian, State of Minnesota, County of KANABEC

At the corner location shown on the sketch:

- On \_\_\_\_\_ found a \_\_\_\_\_  
DATE
- left monument as found,     lowered monument,     removed monument (explain)
- On 2/13/08 Placed a COMPUTED POSITION AT THE CORNER BY SINGLE PROPORTION.  
DATE  
NOTHING WAS SET AT THE CORNER AS IT FALLS IN AN OPEN POND.



KANABEC COUNTY  
 COORDINATE SYSTEM  
 NAD 83 1996 ADJ.  
 N = 134692.977  
 E = 385784.949

SOUTHEAST CORNER  
 SECTION 32

BEARINGS BASED ON KANABEC COUNTY NAD 83,  
 1996 ADJUSTMENT, COORDINATE SYSTEM.

Statement of evidence for this corner location is on back of this page.

RAL JULY 2009  
 WMA00657.00.00.01

I certify that this document was researched and prepared by me or under my direct supervision.

SIGNATURE *John D. Walker* DATE 9/4/09 License Number 16098

Title:  Land Surveyor     Professional Engineer     County Surveyor     County Engineer

**East Quarter Corner Section 32, Township 39 North, Range 24 West**

- 1855 U.S. General Land Office notes obtained from the Secretary of State's Office states that a post was set for corner with the following bearing trees marked:  
5" Tamarac, N 81° E 10 links (6.6 feet)  
6" Tamarac, S 70° W 15 links (9.90 feet)
- 1983 The Minnesota Department of Natural Resources, Bureau of Engineering survey crew searched in the Kanabec County Courthouse for survey information.
- 1983 The DNR Bureau of Engineering contacted the following Registered Land Surveyors for survey information: Morrel B. Rude and Donald Hansen.  
Also the Minnesota Department of Transportation in Brainerd was contacted.
- 1998 The DNR Bureau of Engineering contacted the following Land Surveyors for their information; Morrel B. Rude and Dale B. Anderson
- 2007 DNR Lands and Minerals contacted Ernie Rud, Kanabec County Surveyor for information.
- 1910 John Nelson, County Surveyor, in surveying section 32, ran from the southeast section corner to the northeast corner and set the east quarter corner on line and at a split. He measured 80.12 chains (5287.92') between the section corners, making the split 40.06 chains (2643.96'). He set a stake in bog for the corner. He measured 40 chains to the center of section 32.
- 1967 DNR Bureau of Engineering computed a position for this corner as it was in a bog. The measurement to the section corner north and south was 2646.4'.
- 2007 DNR Lands and Minerals survey crew computed this corner lost between the section corners as it falls in an open pond. The measurement to the section corners north and south is 2643.94'. The distance to the center section 32 is 2646.94'.

For more information on our survey in this area please contact MN DNR, Lands and Minerals, Survey Section, 1601 Minnesota Drive, Brainerd, MN 56401