

CERTIFICATE OF LOCATION OF GOVERNMENT CORNER

EAST QUARTER Corner of Section 9, Township 39, Range 24, 4TH P.M.
STATE OF MINNESOTA, County of KANABEC

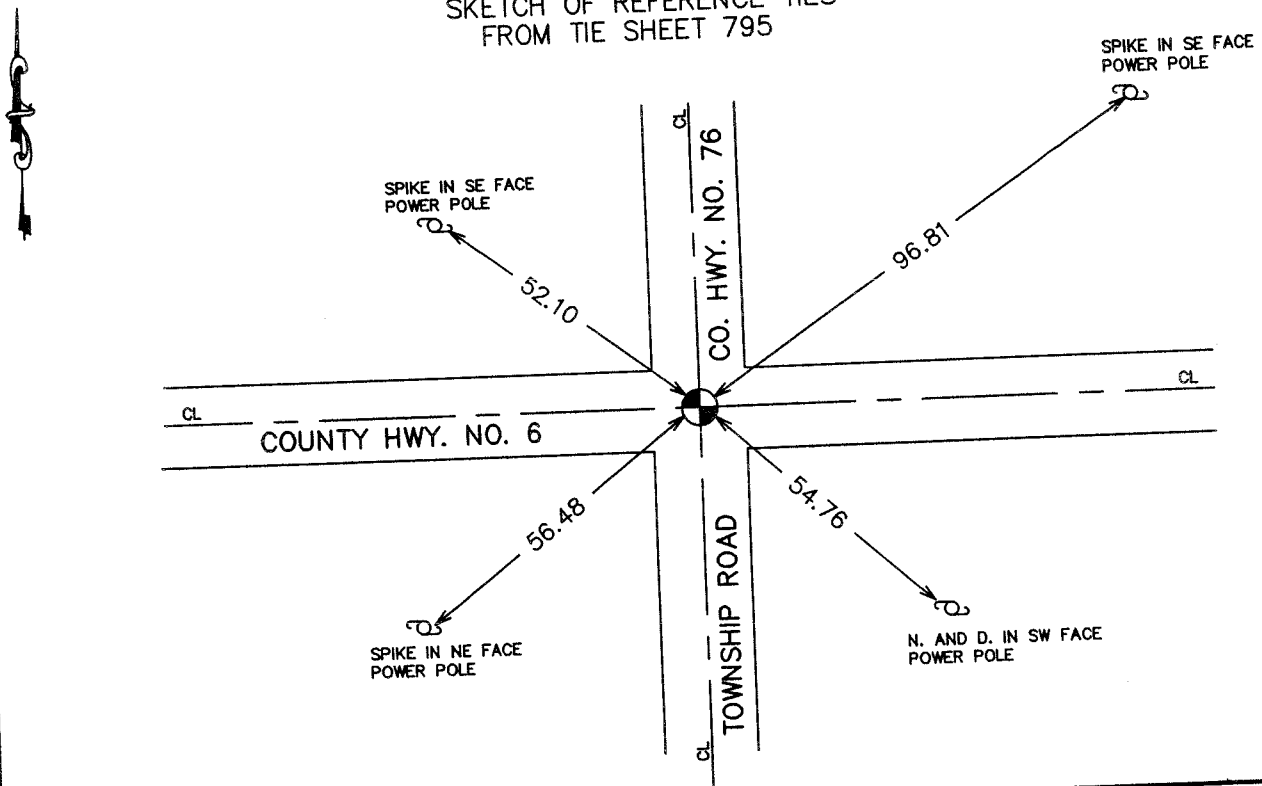
At the corner location shown on the sketch:
On 06/ /2004 Found a Kanabec County Monument.

Kanabec County U.S. Survey Feet Coordinates
NAD 1983, HARN 1996 Adjustment
Obtained by RTK GPS Observation

Northing= 155829.82
Easting= 390818.74

Note: NAD 1983, HARN 1996 Adjustment
coordinates are NOT compatible with
NAD 1983 coordinates
Note: 1 Meter=3937/1200 U.S. Survey Feet

SKETCH OF REFERENCE TIES
FROM TIE SHEET 795



Statement of evidence relative to this corner location is on back of page.

I hereby certify that this document and the data contained herein was prepared by me or under my direct supervision.

Ernst Rud 6-22-2004
Signature Date

Registration No. 9808

- Land Surveyor, [] Professional Engineer
[] County Surveyor, [] County Engineer

OFFICE OF THE COUNTY RECORDER

County of _____
I hereby certify that this document was filed in the County Recorder's office at _____ M. on the _____ day of _____ A.D., 20____
County Recorder _____
BY _____ Deputy

DOCUMENT NO. _____

STATEMENT OF EVIDENCE

This corner was offset by the County Highway Department before County Highway No. 6 was rebuilt. After construction, the County Highway Department reset the cast iron monument, but no certificate was filed.

(2004)

In June 2004, E.G. Rud ran a survey around Sections 9 and found the monument. We established Kanabec County Coordinates on this location using G.P.S. equipment.