

CERTIFICATE OF LOCATION OF GOVERNMENT CORNER

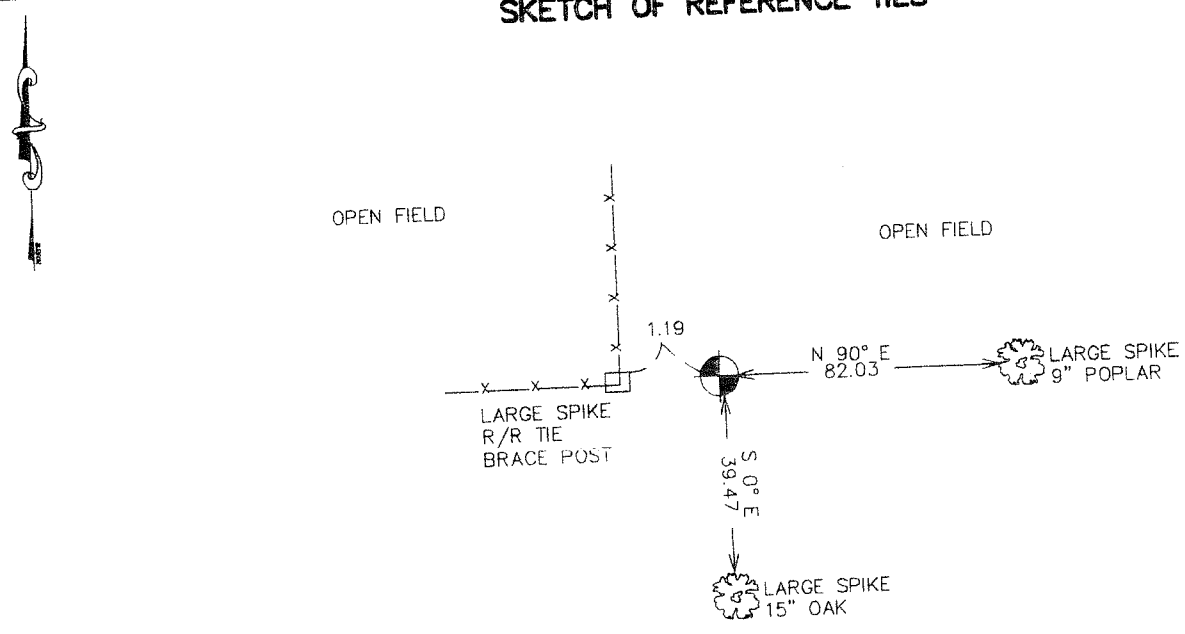
NORTH QUARTER Corner of Section 15, Township 39, Range 24, 4TH P.M.

STATE OF MINNESOTA, County of KANABEC

At the corner location shown on the sketch:
FOUND THIS MONUMENT
AND ESTABLISHED G.P.S. COORDINATES ON ITS LOCATION.

Kanabec County U.S. Survey Feet Coordinates
NAD 1983, HARN 1996 Adjustment
Obtained by RTK GPS Observation
Northing= 153193.79
Easting= 393592.31
Note: NAD 1983, HARN 1996 Adjustment
coordinates are NOT compatible with
NAD 1983 coordinates
Note: 1 Meter=3937/1200 U.S. Survey Feet

SKETCH OF REFERENCE TIES



Statement of evidence relative to this corner location is on back of page.

I hereby certify that this document and the data contained herein was prepared by me or under my direct supervision.

Ernest J. Reed 1-03-2007
Signature Date

Registration No. Minn No 9808

- Land Surveyor, Professional Engineer
- County Surveyor, County Engineer

OFFICE OF THE COUNTY RECORDER

County of _____
I hereby certify that this document was filed in the County Recorder's office at _____ M. on the _____ day of _____ A.D., 20____
County Recorder _____
BY _____ Deputy

DOCUMENT NO. _____

NORTH QUARTER CORNER SECTION 15, T39, R24

STATEMENT OF EVIDENCE

ALL OF THE ORIGINAL BEARING TREES ARE NOW GONE.

MR. JOHN NELSON, THE COUNTY SURVEYOR, USED A LINE AND SPLIT FOR THE CORNER IN 1902.

M.B. RUDE MADE AN EXCAVATION WITH A BACKHOE AND FOUND THE BASE OF AN OLD POST ONE FOOT EAST OF THE CORNER FENCE POST. HE REPLACED THE BASE OF THE WOODEN POST WITH A 4" BY 17" CAST ALUMINUM MONUMENT WITH MAGNETS.

THIS LOCATION FALLS WITHIN 1 FOOT OF A LINE AND SPLIT BETWEEN THE SOUTHWEST AND SOUTHEAST CORNERS OF SECTION 10.

IN FEBRUARY 2003 E.G. RUD AND SONS FOUND THIS MONUMENT, TOOK NEW TIES AND ESTABLISHED KANABEC COUNTY COORDINATES ON THIS POSITION.