

# CERTIFICATE OF LOCATION OF GOVERNMENT CORNER

NORTHEAST Corner of Section 16 , Township 39 , Range 24 , 4TH P.M.

STATE OF MINNESOTA, County of KANABEC

At the corner location shown on the sketch:  
On 06/ /2004 Found a Kanabec County Monument.

Kanabec County U.S. Survey Feet Coordinates  
NAD 1983, HARN 1996 Adjustment  
Obtained by RTK GPS Observation

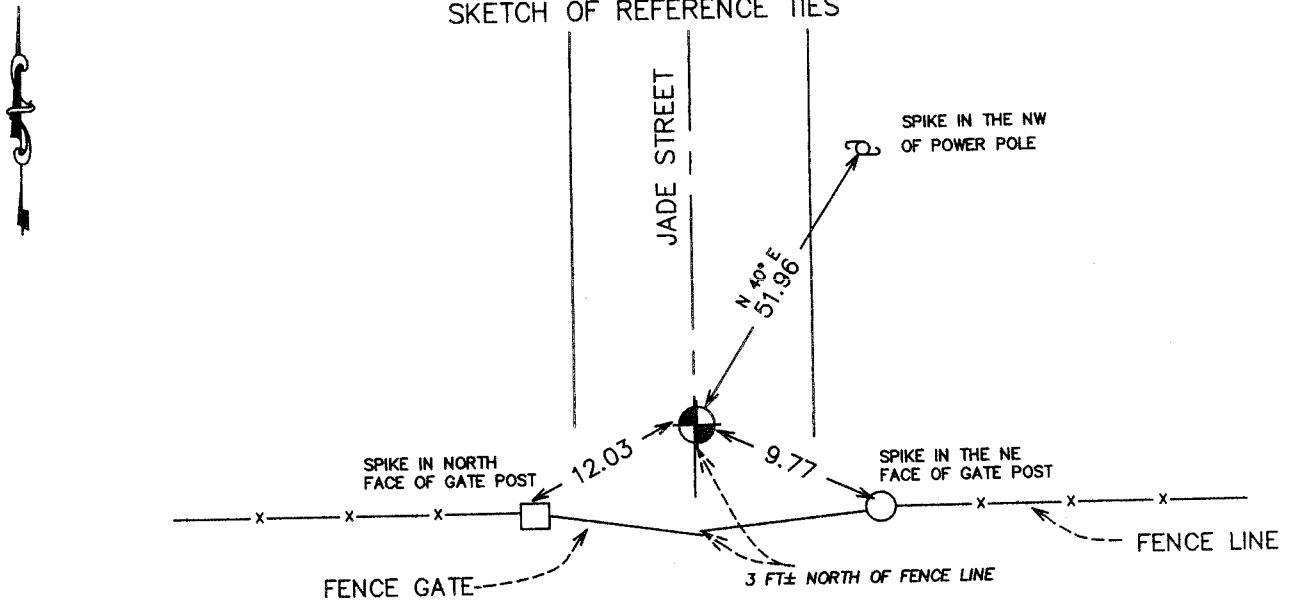
Northing= 153190.33

Easting= 390931.98

Note: NAD 1983, HARN 1996 Adjustment  
coordinates are NOT compatible with  
NAD 1983 coordinates

Note: 1 Meter=3937/1200 U.S. Survey Feet

### SKETCH OF REFERENCE TIES



Statement of evidence relative to this corner location is on back of page.

I hereby certify that this document and the data contained herein was prepared by me or under my direct supervision.

Ernest J. Rud 6-22-2004  
Signature Date

Registration No. 9808

Land Surveyor,     Professional Engineer

County Surveyor,     County Engineer

### OFFICE OF THE COUNTY RECORDER

County of \_\_\_\_\_

I hereby certify that this document was filed in the County Recorder's office at \_\_\_\_\_ M. on the \_\_\_\_\_ day of \_\_\_\_\_ A.D., 20\_\_\_\_

County Recorder \_\_\_\_\_

BY \_\_\_\_\_ Deputy

DOCUMENT NO. \_\_\_\_\_

STATEMENT OF EVIDENCE  
(FROM TIE SHEET 519)

All of the original bearing trees are now gone.

In 1902, John Nelson, the County Surveyor, set a sandstone monument with Section No. 9, 10, 15, and 16 cut in the sandstone monument.

On October 23, 1978, we made an excavation with a backhoe in the center of road and fence lines east and west, at 1 foot below the surface. We found Nelson's cut sandstone with Section numbers on top.

We offset the stone location and replaced it with a 4" by 17" Cast Aluminum Monument.

(2004)

In June of 2004, E.G. Rud & Sons, ran a survey around Section 9 and found this monument. We took new ties and established Kanabec County Coordinates on this corner using G.P.S. equipment.