

CERTIFICATE OF LOCATION OF GOVERNMENT CORNER

NORTHEAST Corner of Section 21, Township 39, Range 24, 4TH P.M.

STATE OF MINNESOTA, County of KANABEC

At the corner location shown on the sketch:
 SET AN IRON MONUMENT WITH AN ALUMINUM CAP DOWN
 12" IN CULTIVATED FIELD.

Kanabec County U.S. Survey Feet Coordinates
 NAD 1983, HARN 1996 Adjustment
 Obtained by RTK GPS Observation

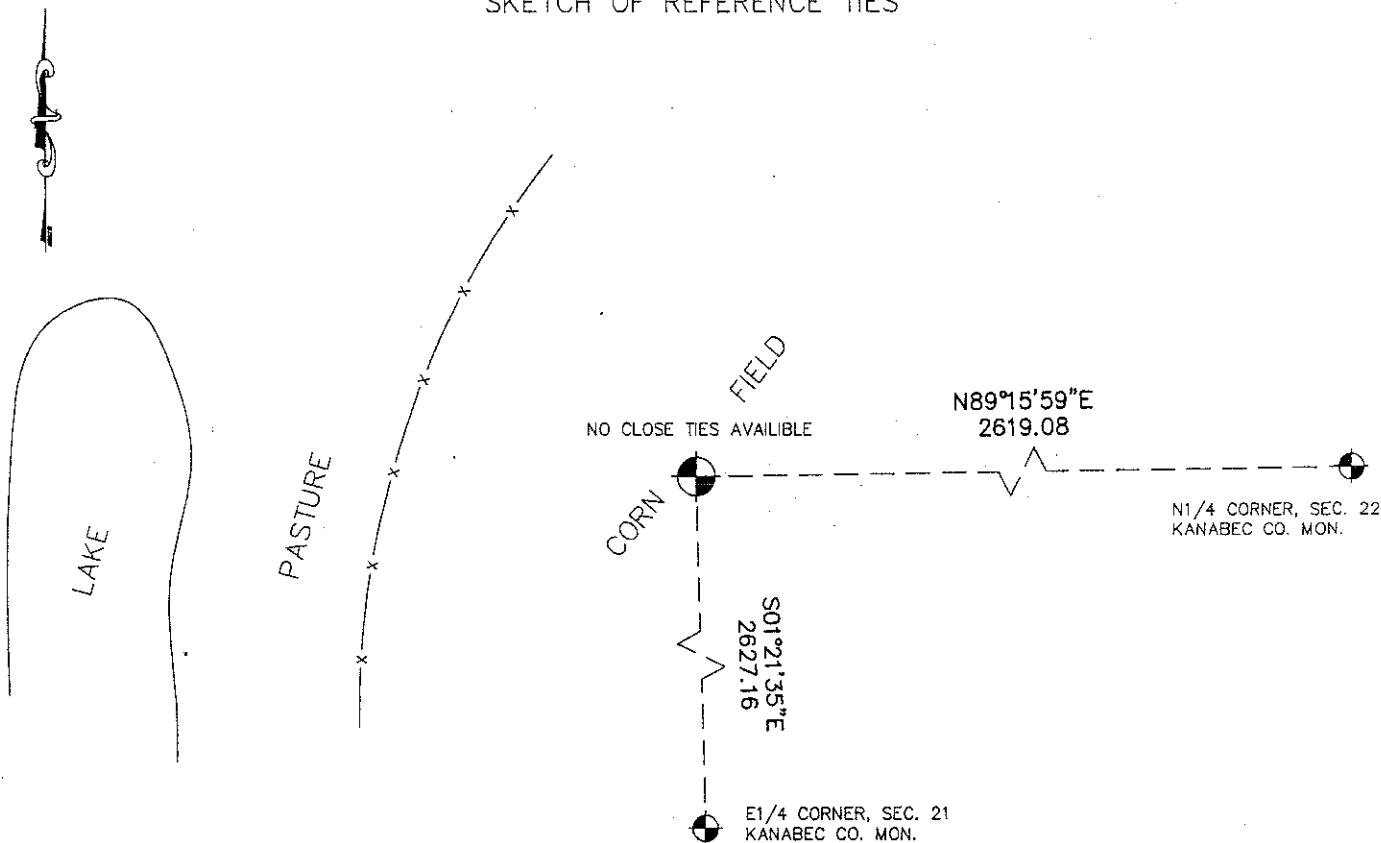
Northing= 147937.30

Easting= 390952.38

Note: NAD 1983, HARN 1996 Adjustment
 coordinates are NOT compatible with
 NAD 1983 coordinates

Note: 1 Meter=3937/1200 U.S. Survey Feet

SKETCH OF REFERENCE TIES



Statement of evidence relative to this corner location is on back of page.

I hereby certify that this document and the data contained herein was prepared by me or under my direct supervision.

Ernest J. Rud
 Signature

12-21-2010
 Date

Registration No. 9808

Land Surveyor, Professional Engineer

County Surveyor, County Engineer

OFFICE OF THE COUNTY RECORDER

County of _____

I hereby certify that this document was filed in the County Recorder's office at _____ M. on the

_____ day of _____ A.D., 20____

County Recorder _____

BY _____ Deputy

DOCUMENT NO. _____

STATEMENT OF EVIDENCE

THE ORIGINAL CORNER POST WAS SET BY DEPUTY SURVEYOR SILAS BARNARD ON SEPT. 28, 1855 AND 4 BEARING TREES ESTABLISHED AS FOLLOWS:

- 7" SUGAR MAPLE BEARING S44°W @ 12 LINKS**
- IRONWOOD (NO SIZE GIVEN) BEARING N39°E @ 25 LINKS**
- SUGAR MAPLE (NO SIZE GIVEN) BEARING S50°E @ 13 LINKS**
- 6" SUGAR MAPLE BEARING N60°W @ 10 LINKS**

NO VISIBLE EVIDENCE REMAINS TODAY FOR THE CORNER OR BEARING TREES.

ON PAGE 12 OF SURVEY BOOK 2 OF 2 IN KANABEC COUNTY OFFICES, JOHN NELSON RECORDED A SURVEY OF SECS. 15, 16, 21 AND 22 WHICH WAS DONE ON MAY 5-16, 1902. ON THAT SURVEY JOHN STATED THAT HE SET A SANDSTONE AT THIS CORNER WITH AN "X" AND THE SEC. NOS. 15, 16, 21 AND 22 INSCRIBED ON IT.

THIS CORNER FALLS IN A CULTIVATED FIELD WITH COMMON OWNERSHIP ON ALL SIDES.

ON NOV. 23, 2010 E.G. RUD AND SONS, INC. SET A 1/2" IRON MONUMENT WITH AN ALUMINUM CAP DOWN 12" FROM THE SURFACE. THIS POSITION WAS ESTABLISHED BY DOUBLE PROPORTIONATE MEASUREMENTS FROM THE N1/4 CORNER OF SEC. 22 TO THE NW CORNER OF SEC. 21 AND BETWEEN THE E1/4 CORNER OF SEC. 16 AND THE E1/4 CORNER OF SEC. 21. NO TIES WERE AVAILABLE AND KANABEC COUNTY COORDINATES WERE ESTABLISHED ON THIS POSITION.