

CERTIFICATE OF LOCATION OF GOVERNMENT CORNER

WEST QUARTER Corner of Section 22, Township 39, Range 24, 4TH P.M.

STATE OF MINNESOTA, County of KANABEC

At the corner location shown on the sketch:
 On 3/27/2002 Found a KANABEC COUNTY MONUMENT.
 Down 1.0 foot.
 Said monument was as found.

Kanabec County U.S. Survey Feet Coordinates
 NAD 1983, HARN 1996 Adjustment
 Obtained by RTK GPS Observation

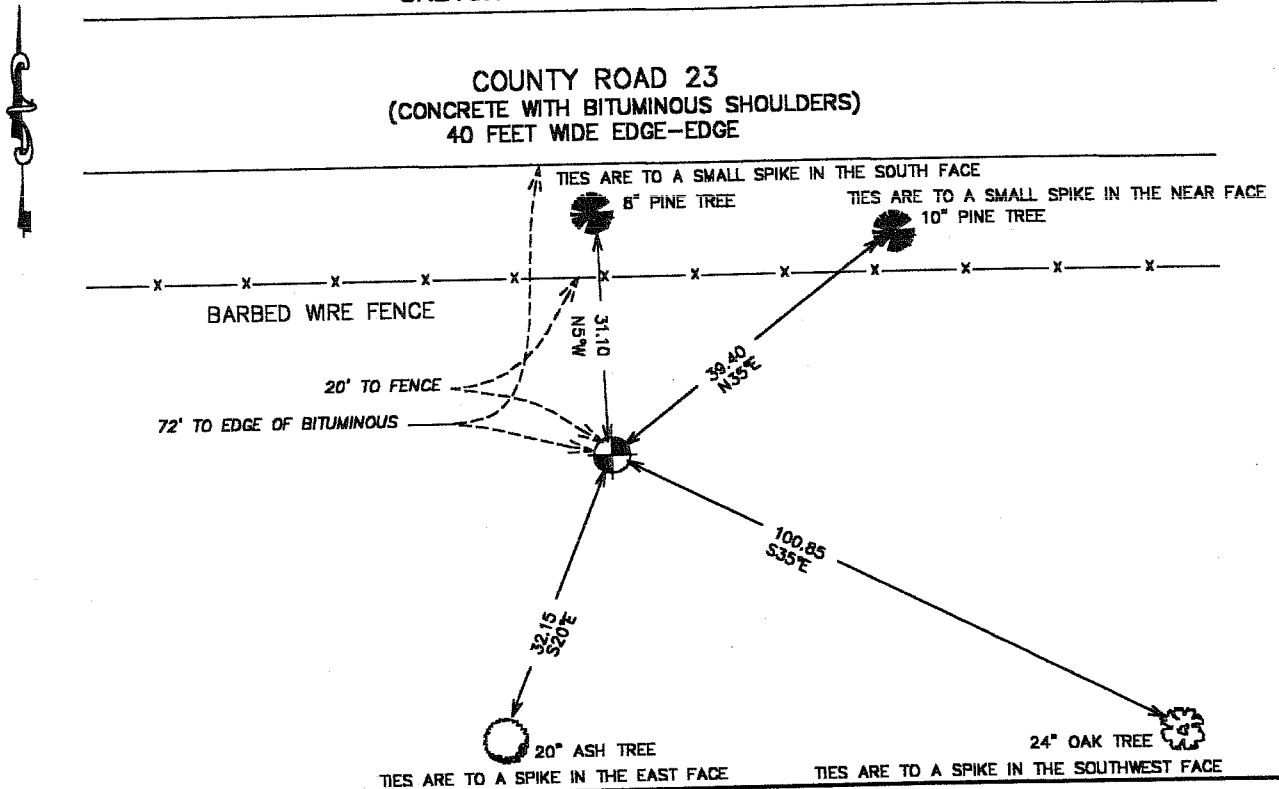
Northing= 145310.8845

Easting= 391014.7229

Note: NAD 1983, HARN 1996 Adjustment
 coordinates are NOT compatible with
 NAD 1983 coordinates

Note: 1 Meter=3937/1200 U.S. Survey Feet

SKETCH OF REFERENCE TIES



Statement of evidence relative to this corner location is on back of page.

I hereby certify that this document and the data contained herein was prepared by me or under my direct supervision.

Ernest G. Rud
 Signature

9-06-2002
 Date

Registration No. 9808

- Land Surveyor, Professional Engineer
 County Surveyor, County Engineer

OFFICE OF THE COUNTY RECORDER

County of _____
 I hereby certify that this document was filed in the County Recorder's office at _____ M. on the _____ day of _____ A.D., 20____

County Recorder _____
 BY _____ Deputy

DOCUMENT NO. _____