

CERTIFICATE OF LOCATION OF GOVERNMENT CORNER

NORTH QUARTER Corner of Section 27, Township 39, Range 24, 4TH P.M.

STATE OF MINNESOTA, County of KANABEC

At the corner location shown on the sketch:
IN FEB. 2002, FOUND 1" REBAR WITH ALUMINUM CAP

Kanabec County U.S. Survey Feet Coordinates
NAD 1983, HARN 1996 Adjustment
Obtained by RTK GPS Observation

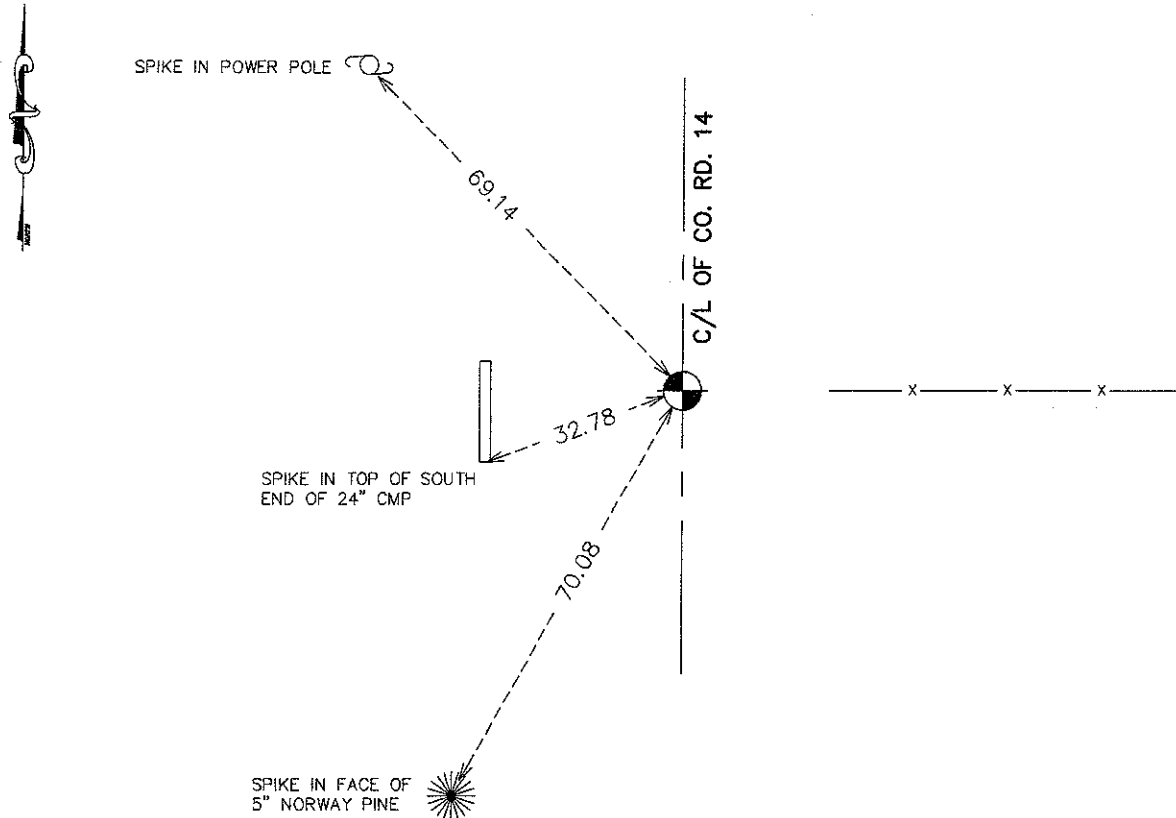
Northing= 142680.26

Easting= 393644.22

Note: NAD 1983, HARN 1996 Adjustment
coordinates are NOT compatible with
NAD 1983 coordinates

Note: 1 Meter=3937/1200 U.S. Survey Feet

SKETCH OF REFERENCE TIES



Statement of evidence relative to this corner location is on back of page.

I hereby certify that this document and the data contained herein was prepared by me or under my direct supervision.

Ernest Rud
Signature

11-27-10
Date

Registration No. 9808

Land Surveyor, Professional Engineer

County Surveyor, County Engineer

OFFICE OF THE COUNTY RECORDER

County of _____

I hereby certify that this document was filed in the County Recorder's office at _____ M. on the

_____ day of _____ A.D., 20____

County Recorder _____

BY _____ Deputy

DOCUMENT NO. _____

E1/4 CORNER, SEC. 31, T38, R25

STATEMENT OF EVIDENCE

IN THE ORIGINAL GOV'T SURVEY A POST WAS SET AT THE WESTERLY MARGIN OF MEADOWS AND NO BEARING TREES WERE AVAILABLE.

RESURVEY INFORMATION

IN 1902, JOHN NELSON DID A SURVEY ALONG THE NORTH LINE OF SEC. 27. ACCORDING TO THE SURVEY NO CORNER WAS SET.

TERRY JOHNSON MET WITH THE COUNTY ENGINEER ON NOV. 7, 1986 AT THE SITE OF THIS CORNER. THE COUNTY ENGINEER TOLD TERRY JOHNSON THAT IN 1986 COUNTY HWY 14 WAS RECONSTRUCTED AND IN THIS AREA THE ROAD WAS EXCAVATED BELOW NATURAL GROUND TO CORRECT "FROST BOILS" IN THE AREA.

TERRY JOHNSON SET A 1" REBAR WITH AN ALUMINUM CAP AT THE CENTERLINE OF THE COUNTY ROAD AND OLD FENCE LINE WHICH RUNS EAST. HE ACCEPTED THIS POSITION AS THE BEST EVIDENCE OF THE ORIGINAL CORNER.

IN FEB. 2002, E.G. RUD AND SONS, INC. LOCATED THIS MONUMENT AND ESTABLISHED KANABEC COUNTY COORDINATES ON THIS POSITION.