

# CERTIFICATE OF LOCATION OF GOVERNMENT CORNER

NORTH QUATER Corner of Section 34, Township 39, Range 24, 4TH P.M.

STATE OF MINNESOTA, County of KANABEC

At the corner location shown on the sketch:  
On 03/26/2002 Found a 7/8" x 36" CAPPED REBAR MONUMENT.  
Said monument was as found.

Kanabec County U.S. Survey Feet Coordinates  
NAD 1983, HARN 1996 Adjustment  
Obtained by RTK GPS Observation

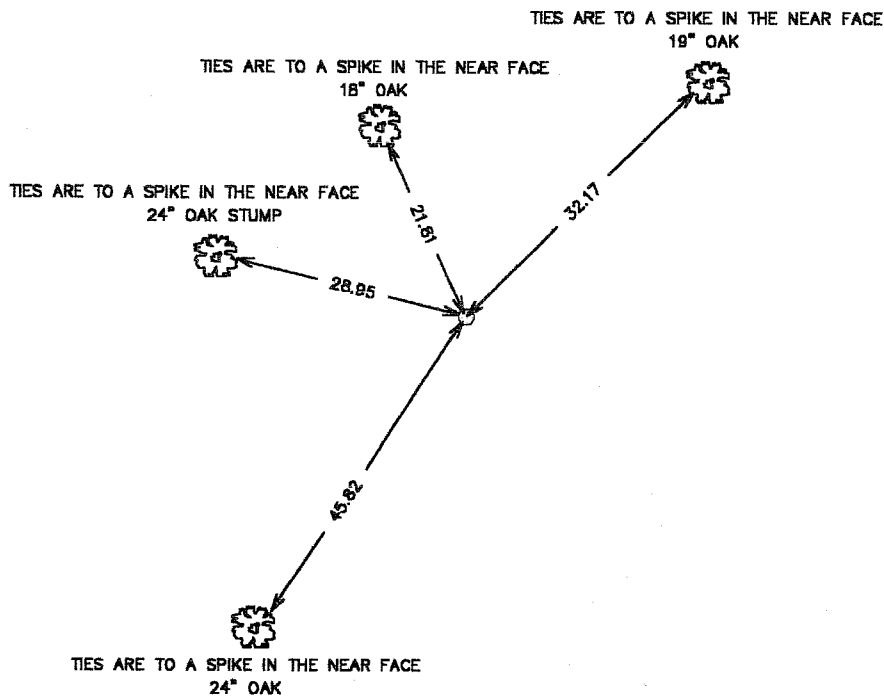
Northing= 137385.5853

Easting= 393614.5874

Note: NAD 1983, HARN 1996 Adjustment  
coordinates are NOT compatible with  
NAD 1983 coordinates

Note: 1 Meter=3937/1200 U.S. Survey Feet

## SKETCH OF REFERENCE TIES



Statement of evidence relative to this corner location is on back of page.

I hereby certify that this document and the data contained herein was prepared by me or under my direct supervision.

*Ernest L. Reed*  
Signature

8-23-2002  
Date

Registration No. 9808

- Land Surveyor,     Professional Engineer
- County Surveyor,     County Engineer

## OFFICE OF THE COUNTY RECORDER

County of \_\_\_\_\_

I hereby certify that this document was filed in the County Recorder's office at \_\_\_\_\_ M. on the

\_\_\_\_\_ day of \_\_\_\_\_ A.D., 20\_\_\_\_

County Recorder \_\_\_\_\_

BY \_\_\_\_\_ Deputy

DOCUMENT NO. \_\_\_\_\_

STATEMENT OF EVIDENCE *From tie sheet 688*

All of the original bearing trees are now gone.

There is a survey on file at the County Recorder;s Office, dated in 1909, by Mr. John Nelson the County Surveyor. It shows this corner was not found in 1909 and a stake was set midway between the northeast and northwest corners of Section 34.

I set this corner by the westerly extension of the north line of the recorded plats of RENSTROM;S LINDEN SHORES and LINDEN ACRES that are located in Government Lot 1 of Section 34 and midway between the northwest and northeast corners of Section 34.

A thorough search was made in this location for evidence, but none was found.

Using this location for the north quarter corner the south line of the above recorded plats also fit the south line of Government Lot 1.