

CERTIFICATE OF LOCATION OF GOVERNMENT CORNER

3924078

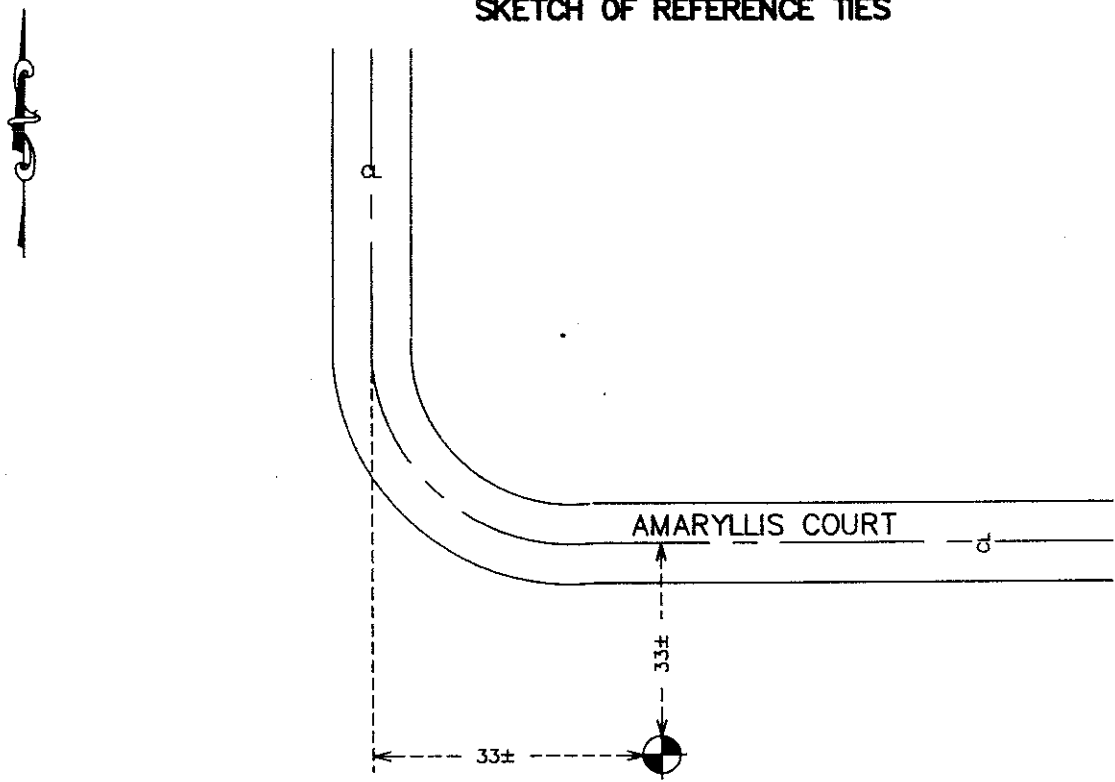
NORTHEAST Corner of Section 10, Township 39, Range 24, 4TH P.M.

STATE OF MINNESOTA, County of KANABEC

At the corner location shown on the sketch:
FOUND A CAST IRON MONUMENT

Kanabec County U.S. Survey Feet Coordinates
NAD 1983, HARN 1996 Adjustment
Obtained by RTK GPS Observation
Northing= ~~158486.66~~ 158488.63
Easting= ~~398864.41~~ 396220.39
Note: NAD 1983, HARN 1996 Adjustment
coordinates are NOT compatible with
NAD 1983 coordinates
Note: 1 Meter=3937/1200 U.S. Survey Feet

SKETCH OF REFERENCE TIES



Statement of evidence relative to this corner location is on back of page.

I hereby certify that this document and the data contained herein was prepared by me or under my direct supervision.

Ewert J. Reed
Signature

3-31-2008
Date

Registration No. 9808

- Land Surveyor, [] Professional Engineer
- [] County Surveyor, [] County Engineer

OFFICE OF THE COUNTY RECORDER

County of _____

I hereby certify that this document was filed in the County Recorder's office at _____ M. on the _____ day of _____ A.D., 20 _____

County Recorder _____

BY _____ Deputy

DOCUMENT NO. _____

STATEMENT OF EVIDENCE

IN 1970 GERALD SULLIVAN SET A CAST IRON MONUMENT IN PLACE OF A 3/4 INCH IRON PIPE SET BY CARDARELLE AND ASSOCIATES IN JANUARY OF 1969 AND RECORDED THIS ON PAGE 249 OF THE COUNTY TIE BOOK.

IN 2003 E.G. RUD & SONS, INC. ESTABLISHED KANABEC COUNTY COORDINATES ON THIS POSITION USING GLOBAL POSITIONING SYSTEM (G.P.S.) EQUIPMENT.