

CERTIFICATE OF LOCATION OF GOVERNMENT CORNER

 EAST QUARTER Corner of Section 10, Township 39, Range 24, 4TH P.M.

STATE OF MINNESOTA, County of KANABEC

At the corner location shown on the sketch:
 FOUND A CAST IRON MONUMENT PER CERT NO. 241 & 794.

Kanabec County U.S. Survey Feet Coordinates
 NAD 1983, HARN 1996 Adjustment
 Obtained by RTK GPS Observation

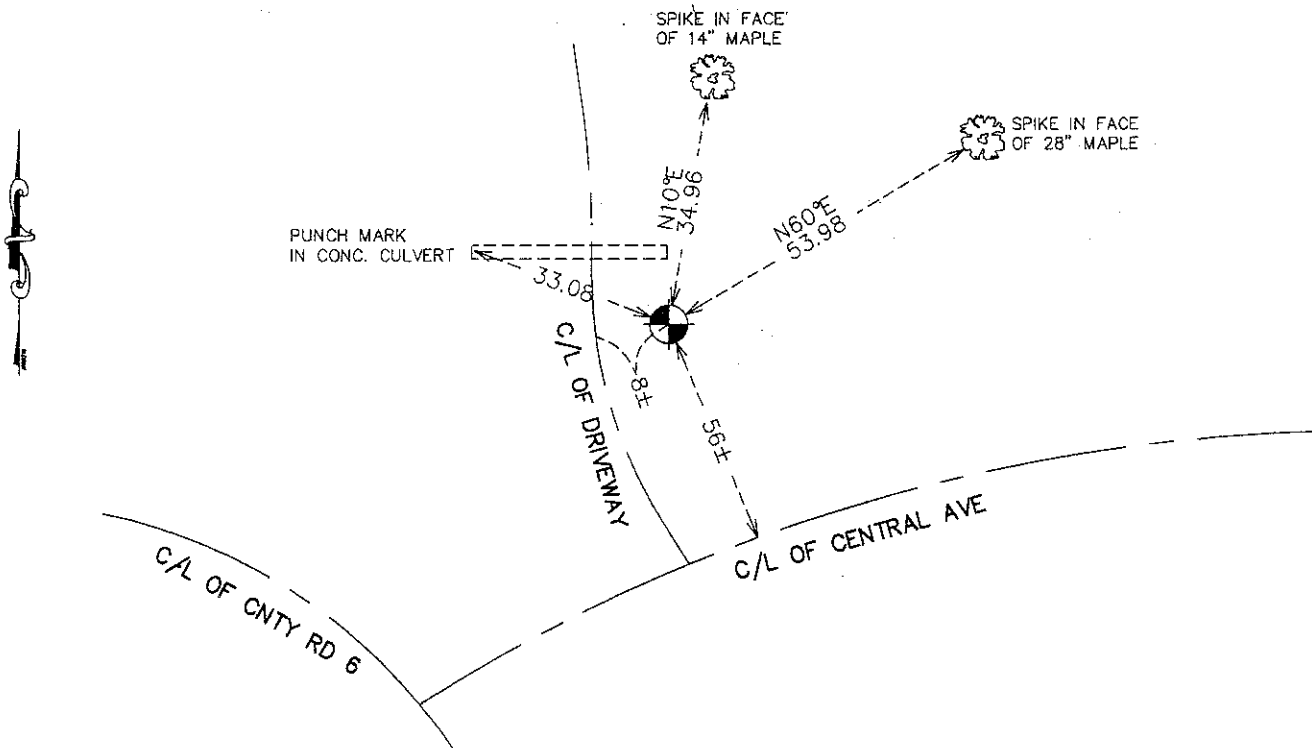
Northing= 155834.22

Easting= 396234.81

Note: NAD 1983, HARN 1996 Adjustment
 coordinates are NOT compatible with
 NAD 1983 coordinates

Note: 1 Meter=3937/1200 U.S. Survey Feet

SKETCH OF REFERENCE TIES



Statement of evidence relative to this corner location is on back of page.

I hereby certify that this document and the data contained herein was prepared by me or under my direct supervision.

Ernest J. Paul
 Signature

12-21-2010
 Date

Registration No. 9808

- Land Surveyor, Professional Engineer
 County Surveyor, County Engineer

OFFICE OF THE COUNTY RECORDER

County of

I hereby certify that this document was filed in the County Recorder's office at M. on the day of A.D., 20

County Recorder

BY Deputy

DOCUMENT NO.

E1/4 CORNER, SEC. 10, T39, R24

STATEMENT OF EVIDENCE

THE ORIGINAL CORNER POST WAS SET BY DEPUTY SURVEYOR SILAS BARNARD ON SEPT. 28, 1855 AND 1 BEARING TREE ESTABLISHED AS FOLLOWS:

6" SCRUB OAK BEARING N5°E @ 250 LINKS

NO VISIBLE EVIDENCE REMAINS TODAY FOR THE CORNER OR BEARING TREES.

ON JUNE 27, 1970 GERALD SULLIVAN SET A CAST IRON MONUMENT TO REPLACE A 1-1/2" X 18" IRON PIPE SET BY CHAS HANDSCHU IN 1931 FOUR NEW TIES WERE TAKEN AND ONE IS STILL IN PLACE.

THIS CAST IRON MONUMENT WAS OFFSET BY THE CNTY HWY DEPT WHEN THE CNTY ROAD WAS REBUILT.

ON DEC. 13, 1988 M.B. RUDE RETIED THIS CORNER AND HIS TIES FIT ONE OF THE REMAINING TIES BY SULLIVAN.

ON NOV. 23, 2010 E.G. RUD AND SONS, INC. FOUND THIS CAST IRON MONUMENT WHICH FIT THE REMAINING TIES AND KANABEC COUNTY COORDINATES WERE ESTABLISHED ON THIS POSITION.