

CERTIFICATE OF LOCATION OF GOVERNMENT CORNER

3924076

SOUTH QUARTER Corner of Section 11, Township 39, Range 24, 4TH P.M.

STATE OF MINNESOTA, County of KANABEC

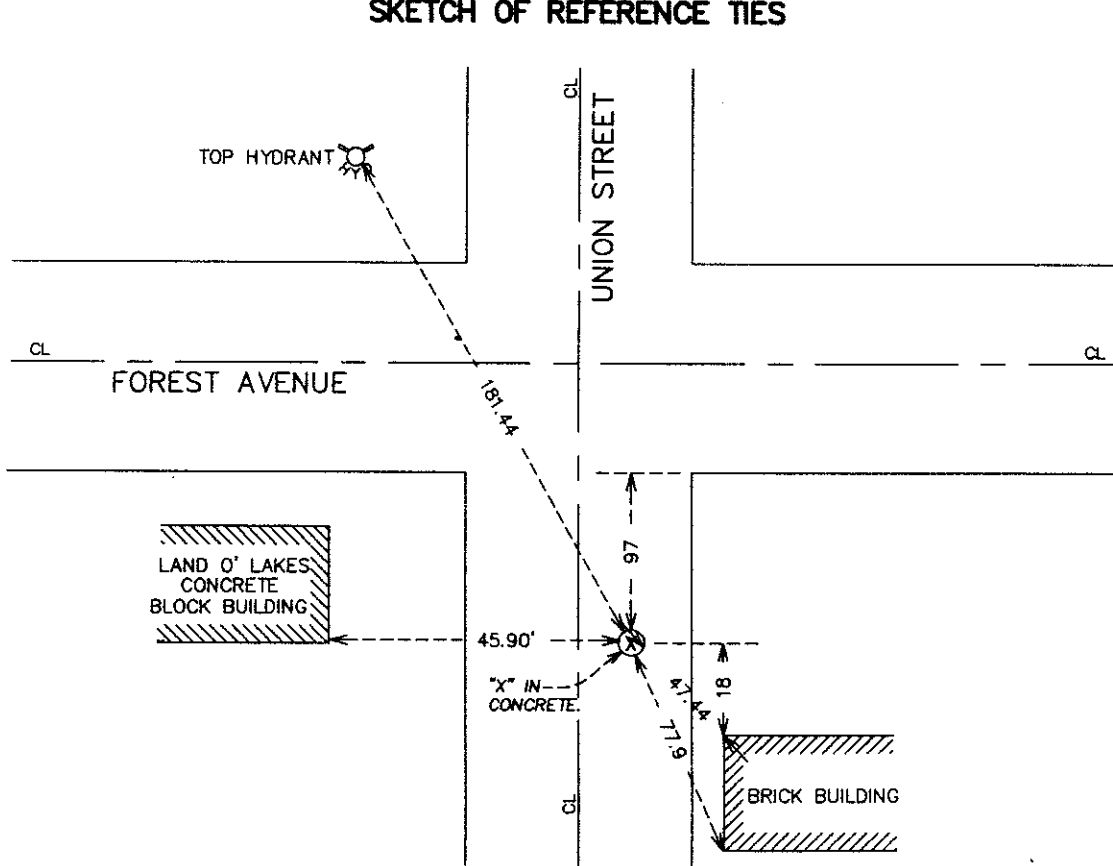
At the corner location shown on the sketch:
 FOUND AN "X" IN CONCRETE STREET

Kanabec County U.S. Survey Feet Coordinates
 NAD 1983, HARN 1996 Adjustment
 Obtained by RTK GPS Observation

Northing= 153190.16
 Easting= 398893.89

Note: NAD 1983, HARN 1996 Adjustment
 coordinates are NOT compatible with
 NAD 1983 coordinates
 Note: 1 Meter=3937/1200 U.S. Survey Feet

SKETCH OF REFERENCE TIES



Statement of evidence relative to this corner location is on back of page.

I hereby certify that this document and the data contained herein was prepared by me or under my direct supervision.

Ernest Rud
 Signature

3-31-2008
 Date

Registration No. 9808

- Land Surveyor, Professional Engineer
 County Surveyor, County Engineer

OFFICE OF THE COUNTY RECORDER

County of _____

I hereby certify that this document was filed in the County Recorder's office at _____ M. on the _____ day of _____ A.D., 20 _____

County Recorder _____

BY _____ Deputy

DOCUMENT NO. _____

SOUTH QUARTER CORNER SECTION 11, TOWNSHIP 39, RANGE 24

STATEMENT OF EVIDENCE

THIS CORNER WAS ESTABLISHED BY M.B. RUDE IN A RE-SURVEY OF SECTION 11, TOWNSHIP 39, RANGE 24, FROM ANGLES AND DISTANCES ON HANDSCHU'S SURVEY OF THE CITY OF MORA IN 1931.

IN 2004 E.G. RUD & SONS, INC. ESTABLISHED KANABEC COUNTY COORDINATES ON THIS POSITION USING GLOBAL POSITIONING SYSTEM (G.P.S.) EQUIPMENT.