

CERTIFICATE OF LOCATION OF GOVERNMENT CORNER

NORTHEAST Corner of Section 22, Township 39, Range 24, 4TH P.M.

STATE OF MINNESOTA, County of KANABEC

At the corner location shown on the sketch:
FOUND THIS MONUMENT
AND ESTABLISHED G.P.S. COORDINATES ON ITS LOCATION.

Kanabec County U.S. Survey Feet Coordinates
NAD 1983, HARN 1996 Adjustment
Obtained by RTK GPS Observation

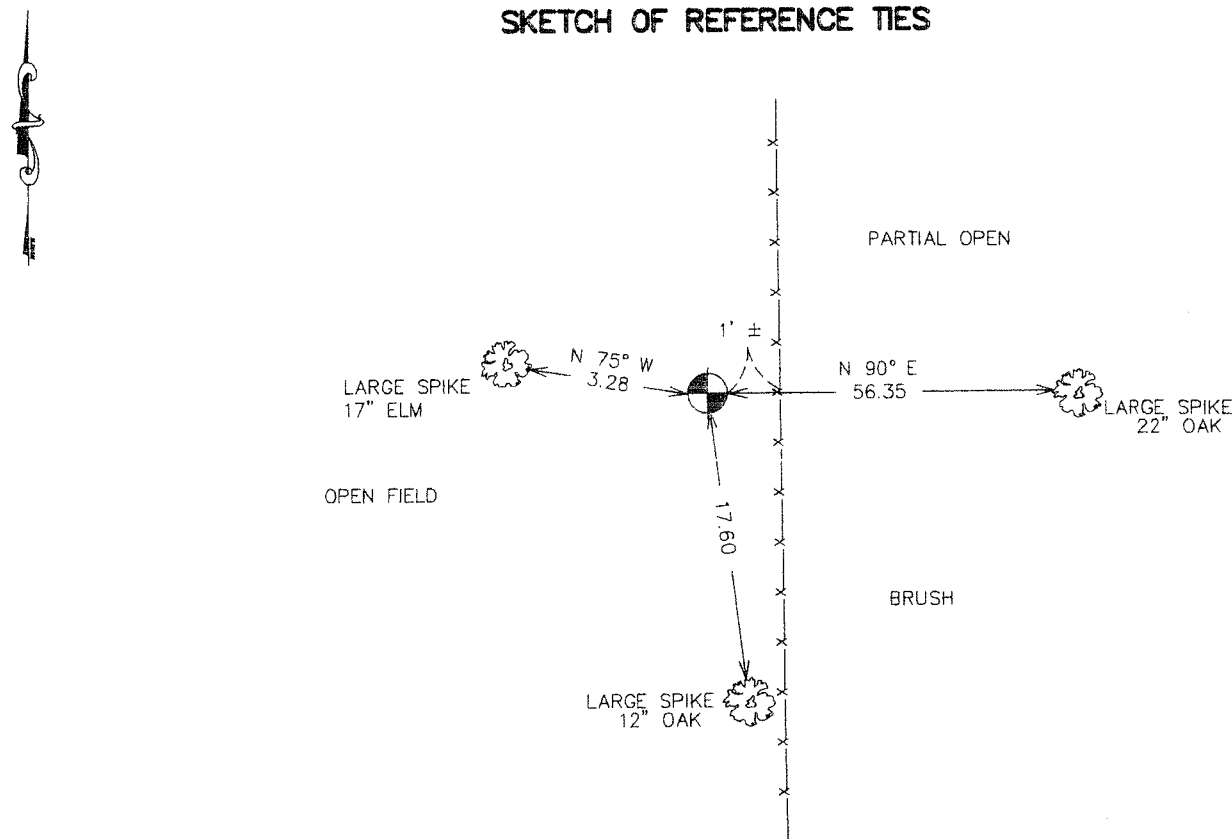
Northing= 147991.52

Easting= 396226.48

Note: NAD 1983, HARN 1996 Adjustment
coordinates are NOT compatible with
NAD 1983 coordinates

Note: 1 Meter=3937/1200 U.S. Survey Feet

SKETCH OF REFERENCE TIES



Statement of evidence relative to this corner location is on back of page.

I hereby certify that this document and the data contained herein was prepared by me or under my direct supervision.

Ernest J. [Signature]
Signature

1-03-2007
Date

Registration No. Minn No 9808

Land Surveyor, Professional Engineer

County Surveyor, County Engineer

OFFICE OF THE COUNTY RECORDER

County of _____

I hereby certify that this document was filed in the County Recorder's office at _____ M. on the

_____ day of _____ A.D., 20____

County Recorder _____

BY _____ Deputy

DOCUMENT NO. _____

NORTHEAST CORNER SECTION 22, T39, R24

STATEMENT OF EVIDENCE

IN 1973 M.B. RUDE SET KANABEC COUNTY MONUMENT AT INTERSECTION FENCE LINES NORTH-SOUTH AND EAST FENCE WENT WEST FROM THIS LOCATION. ALSO ABOUT TEN YEARS AGO PER MR. ANDERSON, LAND OWNER TO WEST AND MR. RALPH CUTLER, LAND OWNER TO NORTHEAST, HAS ASSUMED FENCE INTERSECTION TO BE AT SECTION CORNER.

IN FEBRUARY 2003 E.G. RUD AND SONS FOUND THIS CORNER, TOOK NEW TIES AND ESTABLISHED KANABEC COUNTY COORDINATES ON THIS POSITION.