

CERTIFICATE OF LOCATION OF GOVERNMENT CORNER

3924059

_____ NORTHEAST _____ Corner of Section 14 , Township 39 , Range 24 , 4TH P.M.

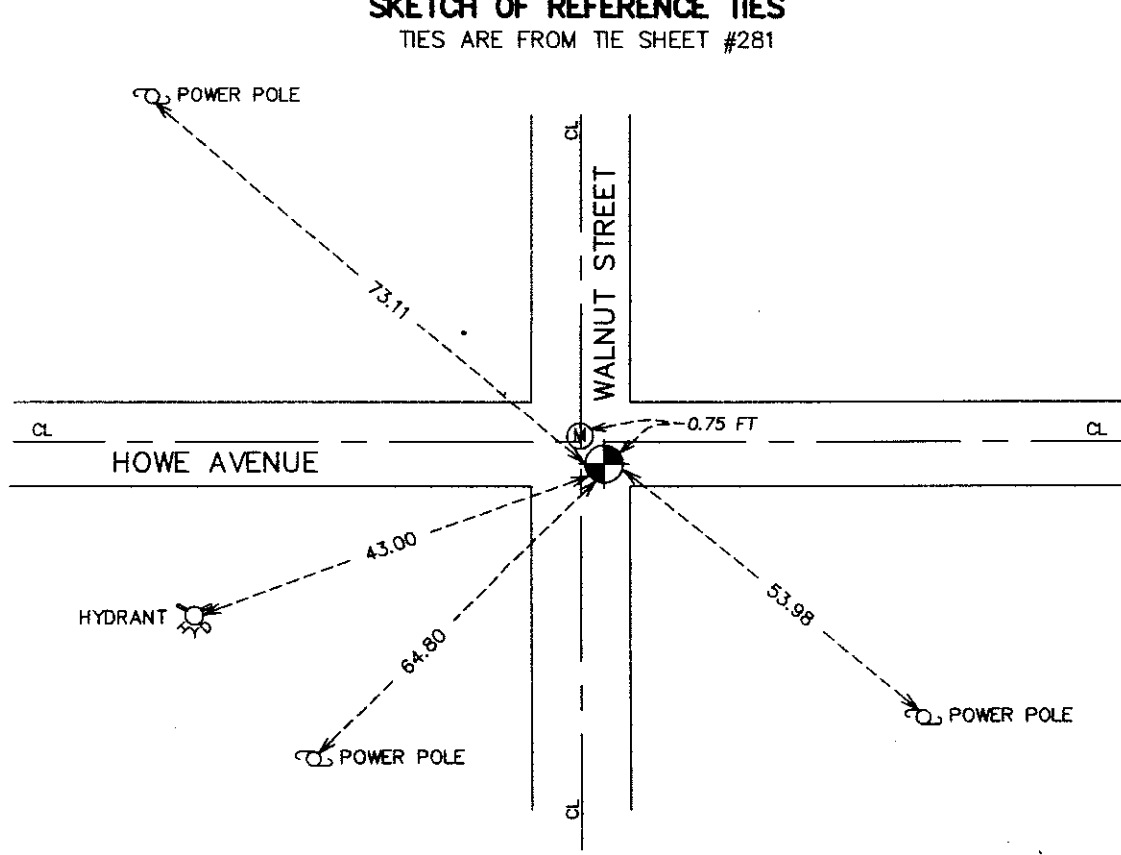
STATE OF MINNESOTA, County of KANABEC

At the corner location shown on the sketch:
FOUND A CAST ALUMINUM MONUMENT

Kanabec County U.S. Survey Feet Coordinates
 NAD 1983, HARN 1996 Adjustment
 Obtained by RTK GPS Observation
 Northing= 153182.49
 Easting= 401538.88
 Note: NAD 1983, HARN 1996 Adjustment
 coordinates are NOT compatible with
 NAD 1983 coordinates
 Note: 1 Meter=3937/1200 U.S. Survey Feet

SKETCH OF REFERENCE TIES

TIES ARE FROM TIE SHEET #281



Statement of evidence relative to this corner location is on back of page.

I hereby certify that this document and the data contained herein was prepared by me or under my direct supervision.

Ernest J. Rud
Signature

3-31-2008
Date

Registration No. 9808

Land Surveyor, [] Professional Engineer

[] County Surveyor, [] County Engineer

OFFICE OF THE COUNTY RECORDER

County of _____

I hereby certify that this document was filed in the County Recorder's office at _____ M. on the _____ day of _____ A.D., 20 _____

County Recorder _____

BY _____ Deputy

DOCUMENT NO. _____

NORTHEAST CORNER SECTION 14, TOWNSHIP 39, RANGE 24

STATEMENT OF EVIDENCE

M.B. RUDE FOUND A CAST ALUMINUM MONUMENT PER THE CERTIFICATE ON FILE AT THE COUNTY RECORDER'S OFFICE WHICH WAS OXIDIZED SO HE REPLACED IT AND ESTABLISHED NEW REFERENCE TIES.

IN 2004 E.G. RUD & SONS, INC. ESTABLISHED KANABEC COUNTY COORDINATES ON THIS POSITION USING GLOBAL POSITIONING SYSTEM (G.P.S.) EQUIPMENT.