

CERTIFICATE OF LOCATION OF GOVERNMENT CORNER

NORTH QUARTER Corner of Section 24, Township 39, Range 24, 4TH P.M.

STATE OF MINNESOTA, County of KANABEC

At the corner location shown on the sketch:
FOUND CAST ALUMINUM MONUMENT WITH MAGNETS.

Kanabec County U.S. Survey Feet Coordinates
NAD 1983, HARN 1996 Adjustment
Obtained by RTK GPS Observation

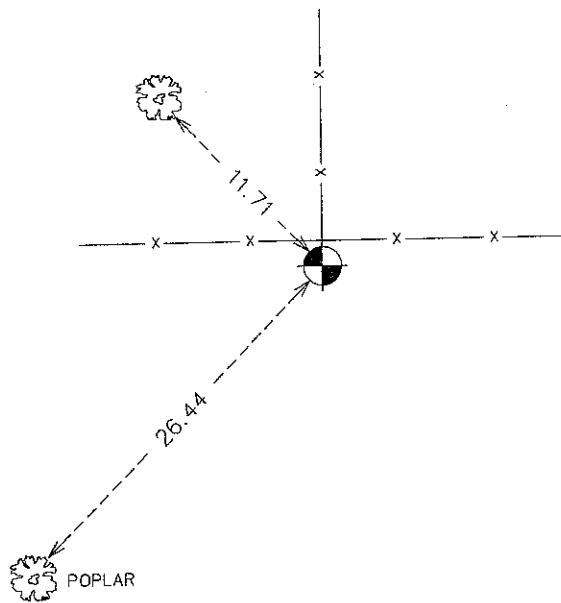
Northing= 147928.19

Easting= 404118.85

Note: NAD 1983, HARN 1996 Adjustment
coordinates are NOT compatible with
NAD 1983 coordinates

Note: 1 Meter=3937/1200 U.S. Survey Feet

SKETCH OF REFERENCE TIES
(TIES FROM CERT. NO. 286)
From



Statement of evidence relative to this corner location is on back of page.

I hereby certify that this document and the data
contained herein was prepared by me or under
my direct supervision.

Ernest J. Rud
Signature

12-23-10
Date

Registration No. 9808

Land Surveyor, [] Professional Engineer

[] County Surveyor, [] County Engineer

OFFICE OF THE COUNTY RECORDER

County of _____

I hereby certify that this document was filed in
the County Recorder's office at _____ M. on the

_____ day of _____ A.D., 20 _____

County Recorder _____

BY _____ Deputy

DOCUMENT NO. _____

N1/4 CORNER, SEC. 24, T39, R24

STATEMENT OF EVIDENCE

THE ORIGINAL CORNER WAS SET BY DEPUTY SURVEYOR SILAS BARNARD ON SEPT. 20, 1855 AND 2 BEARING TREES NOTED AS:

16" PINE @ 75 LINKS BEARING N80°W

15" PINE @ 120 LINKS BEARING S50°W

IN JULY 1975, NO VISIBLE EVIDENCE FOR THE CORNER OR THE BEARING TREES REMAINED.

ON AUG. 21, 1923 GEORGE JENKS SET A SANDSTONE MARKED WITH AN "X" WITH 2 TIES NOTED AS:

6" OAK @ 50.8 FEET BEARING N21°W

7" OAK @ 51.1 FEET BEARING N60°W

THE TREES USED FOR TIES NO LONGER REMAIN.

ON JULY 12, 1973 M.B. RUDE HAND EXCAVATED AROUND A FENCE INTERSECTION AND COULD NOT FIND THE SANDSTONE SET BY JENKS. M.B. RUDE FOUND A NUMBER OF OLD FENCE POSTS AND A LARGE SPIKE AT THE FENCE INTERSECTION. HE SET A KANABEC COUNTY MONUMENT AT THE OLD FENCE INTERSECTION. THIS IS WITHIN 0.3 FEET OF BEING ON LINE BETWEEN THE NW AND NE CORNERS OF SEC. 24.

E.G.RUD AND SONS, INC. FOUND THIS MONUMENT AND KANABEC COUNTY COORDINATES WERE ESTABLISHED ON THIS POSITION.