

# CERTIFICATE OF LOCATION OF GOVERNMENT CORNER

NORTHEAST Corner of Section 23, Township 39, Range 24, 4TH P.M.  
STATE OF MINNESOTA, County of KANABEC

At the corner location shown on the sketch:  
FOUND A CAST IRON MONUMENT IN BLACKTOP

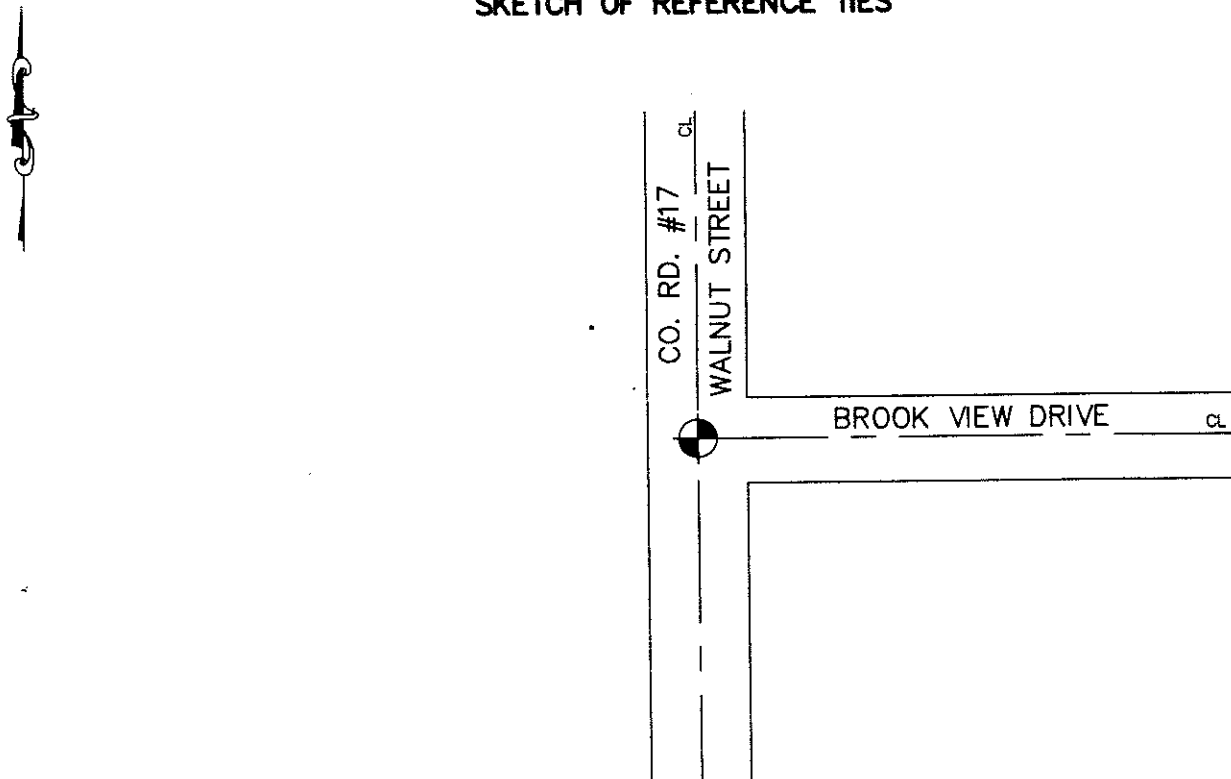
Kanabec County U.S. Survey Feet Coordinates  
NAD 1983, HARN 1996 Adjustment  
Obtained by RTK GPS Observation

Northing= 147930.01  
Easting= 401486.76

Note: NAD 1983, HARN 1996 Adjustment  
coordinates are NOT compatible with  
NAD 1983 coordinates

Note: 1 Meter=3937/1200 U.S. Survey Feet

## SKETCH OF REFERENCE TIES



Statement of evidence relative to this corner location is on back of page.

I hereby certify that this document and the data contained herein was prepared by me or under my direct supervision.

*Ernest Rud* 3-31-2008  
Signature Date

Registration No. 9808

Land Surveyor, [ ] Professional Engineer  
[ ] County Surveyor, [ ] County Engineer

## OFFICE OF THE COUNTY RECORDER

County of \_\_\_\_\_

I hereby certify that this document was filed in the County Recorder's office at \_\_\_\_\_ M. on the

\_\_\_\_\_ day of \_\_\_\_\_ A.D., 20\_\_

County Recorder \_\_\_\_\_

BY \_\_\_\_\_ Deputy

DOCUMENT NO. \_\_\_\_\_

NORTHEAST CORNER SECTION 23, TOWNSHIP 39, RANGE 24

**STATEMENT OF EVIDENCE**

F. TURNICLIFF FOUND A STONE MARKED WITH AN "X" IN 1937.

M.B. RUDE WENT OUT ON JULY 31, 1975 AND FOUND A CAST IRON MONUMENT MARKED PROPERTY CORNER IN BLACKTOP ROAD. MONUMENT FITS CENTERLINE OF ROAD AND OCCUPATION LINES.

IN 2004 E.G. RUD & SONS, INC. ESTABLISHED KANABEC COUNTY COORDINATES ON THIS POSITION USING GLOBAL POSITIONING SYSTEM (G.P.S.) EQUIPMENT.