

# CERTIFICATE OF LOCATION OF GOVERNMENT CORNER

NORTH QUARTER Corner of Section 25, Township 39, Range 24, 4TH P.M.

STATE OF MINNESOTA, County of KANABEC

At the corner location shown on the sketch:  
CAST ALUMINUM MONUMENT

Kanabec County U.S. Survey Feet Coordinates  
NAD 1983, HARN 1996 Adjustment  
Obtained by RTK GPS Observation

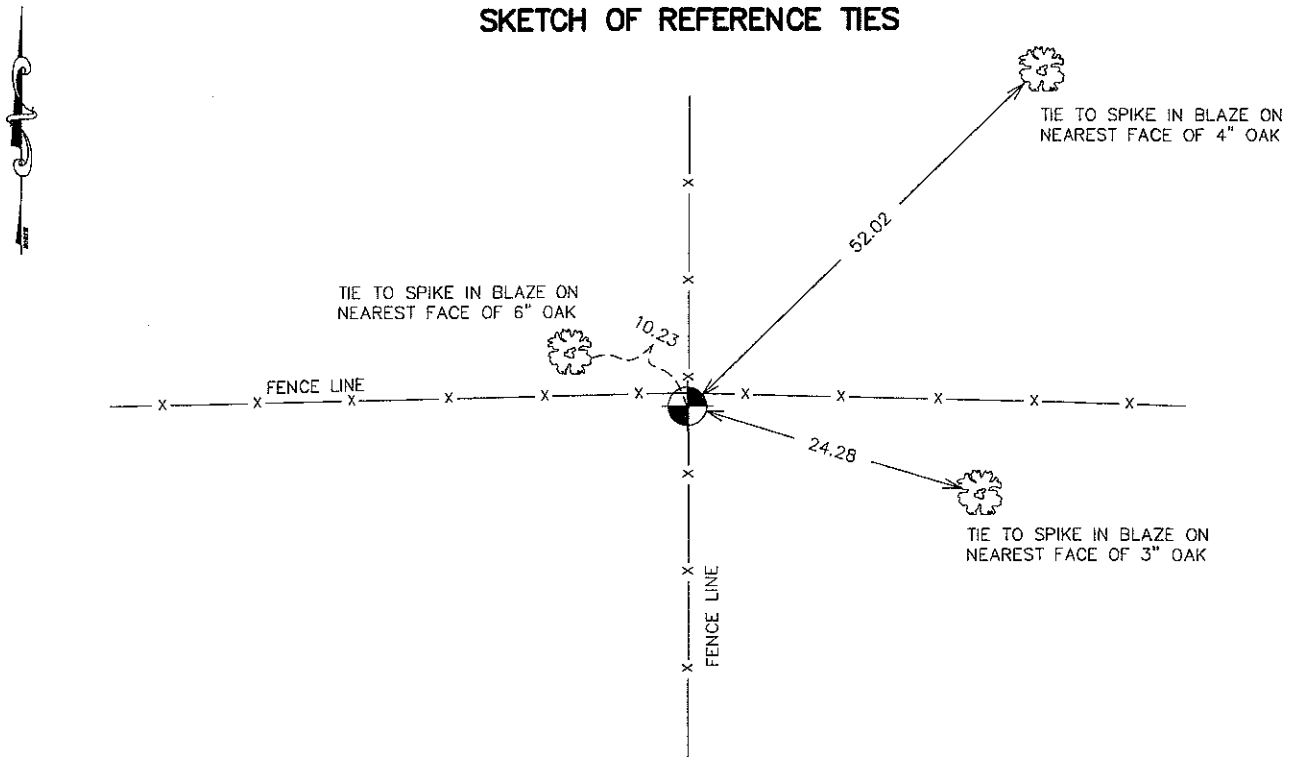
Northing= 142656.12

Easting= 404052.41

Note: NAD 1983, HARN 1996 Adjustment  
coordinates are NOT compatible with  
NAD 1983 coordinates

Note: 1 Meter=3937/1200 U.S. Survey Feet

### SKETCH OF REFERENCE TIES



Statement of evidence relative to this corner location is on back of page.

I hereby certify that this document and the data contained herein was prepared by me or under my direct supervision.

Ernest Blund 1-26-2010  
Signature Date

Registration No. 9808

- Land Surveyor,      [ ] Professional Engineer
- [ ] County Surveyor,    [ ] County Engineer

### OFFICE OF THE COUNTY RECORDER

County of \_\_\_\_\_

I hereby certify that this document was filed in the County Recorder's office at \_\_\_\_\_ M. on the

\_\_\_\_\_ day of \_\_\_\_\_ A.D., 20\_\_

County Recorder \_\_\_\_\_

BY \_\_\_\_\_ Deputy

DOCUMENT NO. \_\_\_\_\_

N 1/4 CORNER, SEC. 25, T39, R24

**STATEMENT OF EVIDENCE**

**ALL OF THE GOVERNMENT TIES ARE GONE. THERE IS NO RE-SURVEY FILED FOR THIS CORNER.**

**IN 1978 M.B. RUDE SET THIS CORNER ON THE SOUTH SIDE OF A VERY OLD FENCE CORNER. THE LOCATION FALLS 5 FEET WEST OF A MIDPOINT BETWEEN THE NORTHEAST AND NORTHWEST CORNERS OF THE SECTION AND 7 FEET NORTH OF A STRAIGHT LINE**

**THE OLD FENCE LINE HAS BEEN ACCEPTED BY THE AREA LAND OWNERS AND IS THE BEST AVAILABLE EVIDENCE OF THE ORIGINAL CORNER LOCATION.**

**IN NOVEMBER 2008, E.G. RUD AND SONS, INC. ESTABLISHED KANABEC COUNTY COORDINATES ON THIS MONUMENT USING G.P.S. EQUIPMENT.**