

CERTIFICATE OF LOCATION OF GOVERNMENT CORNER

NORTH QUARTER Corner of Section 36, Township 39, Range 24, 4TH P.M.

STATE OF MINNESOTA, County of KANABEC

At the corner location shown on the sketch:
4" X 18" CAST ALUMINUM MONUMENT

Kanabec County U.S. Survey Feet Coordinates
NAD 1983, HARN 1996 Adjustment
Obtained by RTK GPS Observation

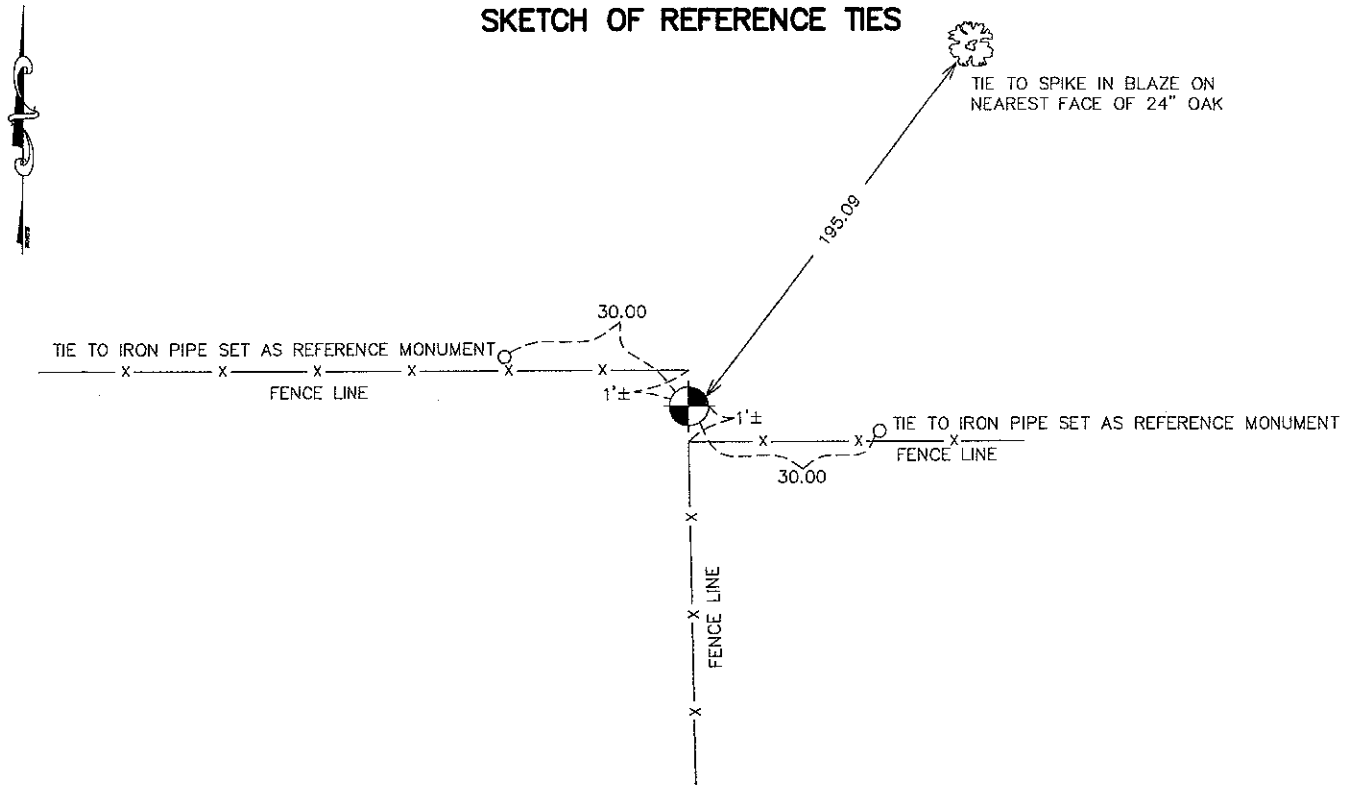
Northing= 137398.92

Easting= 404037.19

Note: NAD 1983, HARN 1996 Adjustment
coordinates are NOT compatible with
NAD 1983 coordinates

Note: 1 Meter=3937/1200 U.S. Survey Feet

SKETCH OF REFERENCE TIES



Statement of evidence relative to this corner location is on back of page.

I hereby certify that this document and the data contained herein was prepared by me or under my direct supervision.

Ernest Rud
Signature

1-26-2010
Date

Registration No. 9808

Land Surveyor, Professional Engineer

County Surveyor, County Engineer

OFFICE OF THE COUNTY RECORDER

County of _____

I hereby certify that this document was filed in the County Recorder's office at _____ M. on the

_____ day of _____ A.D., 20____

County Recorder _____

BY _____ Deputy

DOCUMENT NO. _____

N 1/4 CORNER, SEC. 36, T39, R24

STATEMENT OF EVIDENCE

THERE IS NO RE-SURVEY FILED FOR THIS CORNER.

IN 1978 M.B. RUDE SET THIS CORNER AT THE INTERSECTION OF OLD FENCE LINES, EAST, WEST AND SOUTH. USING THIS LOCATION THE 1/16TH CORNER A QUARTER MILE WEST, FALLS 4 FEET EAST OF THE CENTERLINE OF THE NORTH SOUTH ROAD AND FITS THE FENCE LINE EAST. THE 1/16 CORNER A QUARTER OF A MILE EAST, FITS A NORTH SOUTH FENCE LINE WITHIN 1 FOOT.

THIS OLD FENCE CORNER LOCATION WAS ACCEPTED AS THE BEST AVAILABLE EVIDENCE OF THE ORIGINAL CORNER LOCATION AS IT HAS BEEN ACCEPTED BY THE AREA LAND OWNERS AND DOES NOT UPSET THE OTHER OCCUPATION ALONG THE NORTH LINE OF SECTION 36.

A LINE AND SPLIT LOCATION WOULD FALL 18 FEET, PLUS OR MINUS, NORTH AND 25 FEET, PLUS OR MINUS, EAST OF THIS FENCE CORNER AND ALSO THE 1/16 CORNER, EAST AND WEST, WOULD NOT FIT THE OCCUPATION LINES AS WELL. A CAST ALUMINUM MONUMENT WAS SET AND TIES TAKEN.

IN NOVEMBER 2008, E.G. RUD AND SONS, INC. ESTABLISHED KANABEC COUNTY COORDINATES ON THIS MONUMENT USING G.P.S. EQUIPMENT.