

CERTIFICATE OF LOCATION OF GOVERNMENT CORNER

NORTHEAST Corner of Section 35, Township 39, Range 24, 4TH P.M.

STATE OF MINNESOTA, County of KANABEC

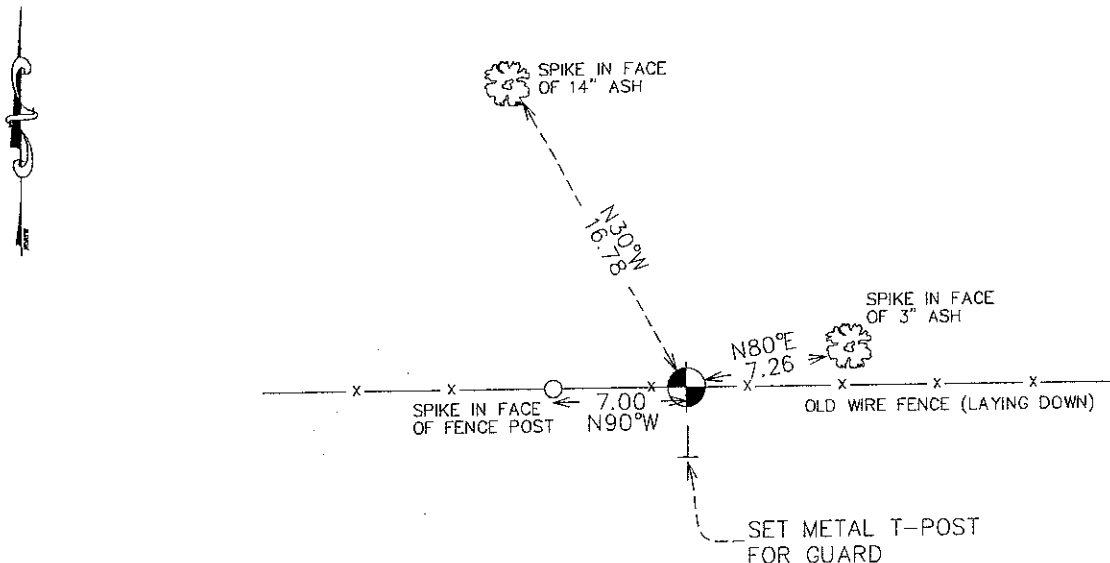
At the corner location shown on the sketch:
 SET A 1/2" X 4' IRON PIPE WITH ALUMINUM CAP STICKING UP 1.5 FEET.

Kanabec County U.S. Survey Feet Coordinates
 NAD 1983, HARN 1996 Adjustment
 Obtained by RTK GPS Observation

Northing= 137448.21
 Easting= 401444.56

Note: NAD 1983, HARN 1996 Adjustment coordinates are NOT compatible with NAD 1983 coordinates
 Note: 1 Meter=3937/1200 U.S. Survey Feet

SKETCH OF REFERENCE TIES



Statement of evidence relative to this corner location is on back of page.

I hereby certify that this document and the data contained herein was prepared by me or under my direct supervision.

Ernest J. Reid
 Signature

1-03-2011
 Date

Registration No. 9808

- Land Surveyor, Professional Engineer
 County Surveyor, County Engineer

OFFICE OF THE COUNTY RECORDER

County of _____

I hereby certify that this document was filed in the County Recorder's office at _____ M. on the

_____ day of _____ A.D., 20__

County Recorder _____

BY _____ Deputy

DOCUMENT NO. _____

STATEMENT OF EVIDENCE

Northeast Corner Section 35, Township 39, Range 24

The original government post was set by Deputy Surveyor on September 20, 1855 and 4 bearing trees established as noted:

- 6" Shrub Oak at 10 links bearing Southeast
- 10" Red Oak at 75 links bearing South 68 degrees West
- 8" Burr Oak at 60 links bearing North 10 degrees East
- 7" Burr Oak at 45 links bearing Northwest

No visible evidence remains for the corner or post today.

In Book A of Surveys, page 120 and 121 a survey by Thomas Yickerey, dated June 17, 1897 is recorded of Section 26. Yickerey stated he set an oak post 10 inches square with markings on 4 sides. A 10" oak at 21 links bearing South 15 degrees West was used as bearing tree. There are section breakdowns done by M. B. Rude of Sections 25, 26, 35 and 36 which all have mathematical information indicating the location of the Northeast corner of Section 35. However no Certificate is on file for this corner.

Therefore on December 22, 2010 E. G. Rud & Sons, Inc. set a ½" x 4' iron pipe at the computed position for this corner. This corner fell on a very old East – West fence lying down. Ties were taken and Kanabec County coordinates established on this position.