

CERTIFICATE OF LOCATION OF GOVERNMENT CORNER

NORTHEAST 2 38 24
 SOUTHEAST Corner of Section 35, Township 39, Range 24, 4TH P.M.

STATE OF MINNESOTA, County of KANABEC

At the corner location shown on the sketch:
 FOUND KANABEC COUNTY MONUMENT.
 KANABEC COUNTY COORDINATES ESTABLISHED IN JUNE 2006

Kanabec County U.S. Survey Feet Coordinates
 NAD 1983, HARN 1996 Adjustment
 Obtained by RTK GPS Observation

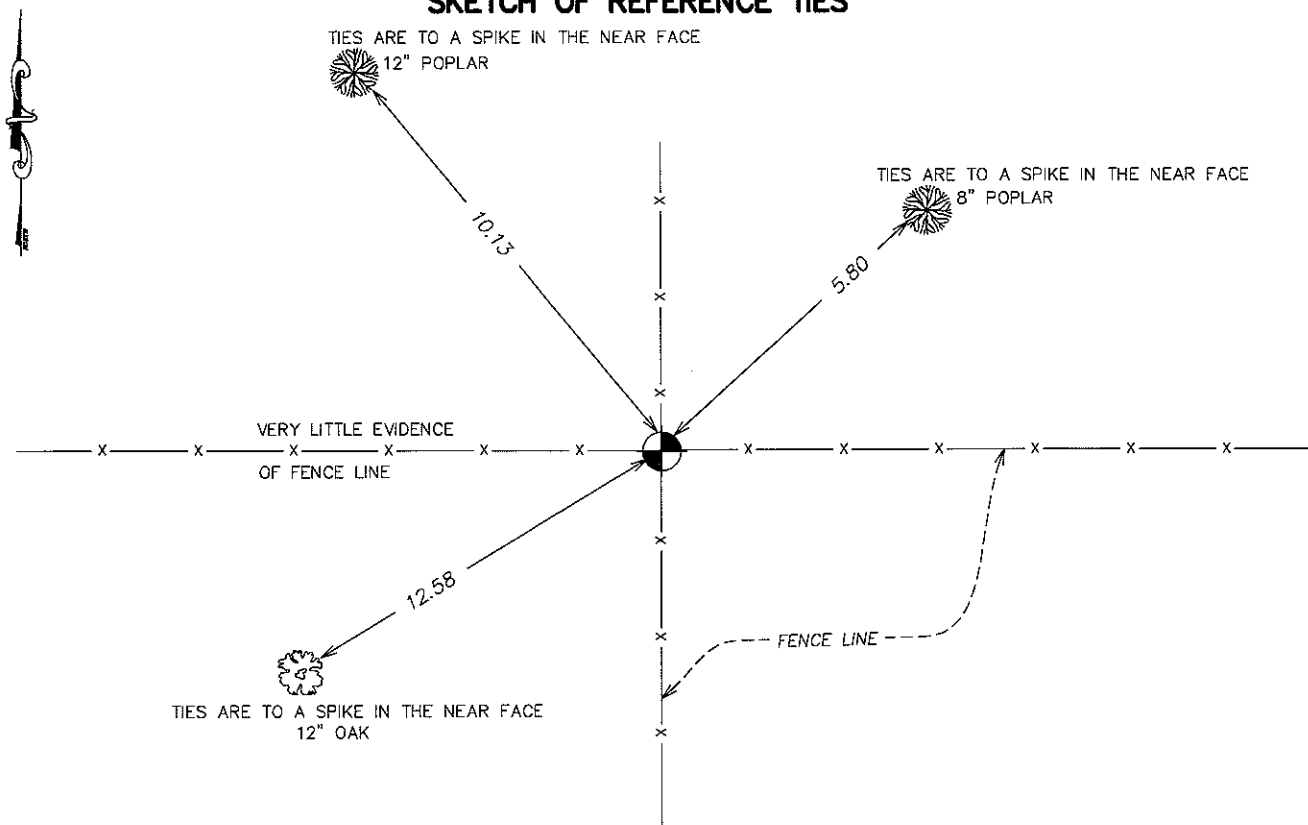
Northing= 132107.145

Easting= 401430.092

Note: NAD 1983, HARN 1996 Adjustment
 coordinates are NOT compatible with
 NAD 1983 coordinates

Note: 1 Meter=3937/1200 U.S. Survey Feet

SKETCH OF REFERENCE TIES



Statement of evidence relative to this corner location is on back of page.

I hereby certify that this document and the data contained herein was prepared by me or under my direct supervision.

Ernest J. Rud

 Signature

2-02-2010

 Date

Registration No. 9808

Land Surveyor, Professional Engineer
 County Surveyor, County Engineer

OFFICE OF THE COUNTY RECORDER

County of _____

I hereby certify that this document was filed in the County Recorder's office at _____ M. on the _____ day of _____ A.D., 20____

County Recorder _____

BY _____ Deputy

DOCUMENT NO. _____

NE CORNER OF SEC 2, T38, R24
SE CORNER OF SEC 35, T39, R24

STATEMENT OF EVIDENCE

THE ORIGINAL CORNER POST WAS SET BY DEPUTY SURVEYOR SILAS BARNARD ON SEPTEMBER 6, 1849 AND 4 BEARING TREES ESTABLISHED: 13" WHITE ASH (N25°W A DISTANCE OF 42 LINKS) AND 10" WHITE ASH (N48°E A DISTANCE OF 25 LINKS) AND 7" WHITE ASH (S59°E A DISTANCE OF 34 LINKS) AND 9" LINDEN (S65°W A DISTANCE OF 35 LINKS). NO VISIBLE EVIDENCE FOR THIS CORNER OR BEARING TREES REMAIN.

IN BOOK A OF SURVEYS, PAGE 304 IS RECORDED A SURVEY BY JOHN NELSON DATED JUNE 3, 1901. HE STATED HE SET THE NE CORNER OF SEC. 2, BUT DOESN'T SAY WHAT WAS SET. 2 BEARING TREES NOTED: 10" DRY OAK (N36°W A DISTANCE OF 39 LINKS) AND 14" DRY ASH (S49°E A DISTANCE OF 304 LINKS).

IN BOOK A OF SURVEYS, PAGE 154, A SURVEY BY VICKERY IS RECORDED OF SEC. 35, BUT HE NEVER WENT TO THE SE CORNER.

ON JULY 12, 1973, M.B. RUDE SET A CAST IRON MONUMENT AT THE INTERSECTION OF OLD FENCES RUNNING NORTH-SOUTH AND EAST-WEST. THIS WAS DONE IN CONJUNCTION WITH A RESURVEY OF SECS. 23, 26 AND 35.

IN JUNE 2006, E.G. RUD AND SONS ESTABLISHED KANABEC COUNTY COORINATES ON THIS MONUMENT.