

# CERTIFICATE OF LOCATION OF GOVERNMENT CORNER

SOUTHWEST Corner of Section 35, Township 39, Range 24, 4TH P.M.  
 STATE OF MINNESOTA, County of KANABEC

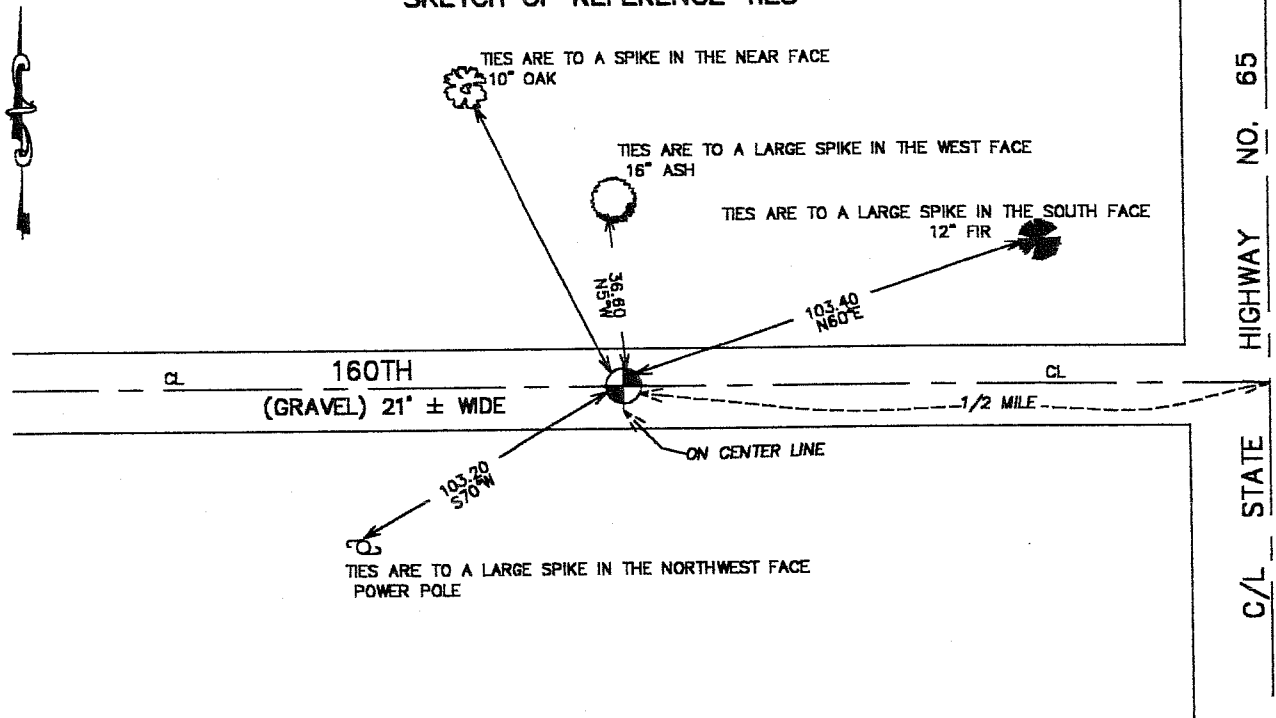
At the corner location shown on the sketch:  
 On 3/26/2002 Found a KANABEC COUNTY MONUMENT  
 BADLY CORRODED.  
 Down 0.5 feet.  
 Said monument was as found.

Kanabec County U.S. Survey Feet Coordinates  
 NAD 1983, HARN 1996 Adjustment  
 Obtained by RTK GPS Observation

Northing= 132098.6517  
 Easting= 396187.3837

Note: NAD 1983, HARN 1996 Adjustment  
 coordinates are NOT compatible with  
 NAD 1983 coordinates  
 Note: 1 Meter=3937/1200 U.S. Survey Feet

### SKETCH OF REFERENCE TIES



Statement of evidence relative to this corner location is on back of page.

I hereby certify that this document and the data contained herein was prepared by me or under my direct supervision.

Ernest J. Rud 10-29-2002  
Signature Date

Registration No. 9808  
 Land Surveyor,     Professional Engineer  
 County Surveyor,     County Engineer

### OFFICE OF THE COUNTY RECORDER

County of \_\_\_\_\_  
 I hereby certify that this document was filed in the County Recorder's office at \_\_\_\_\_ M. on the \_\_\_\_\_ day of \_\_\_\_\_ A.D., 20\_\_\_\_  
 County Recorder \_\_\_\_\_  
 BY \_\_\_\_\_ Deputy

DOCUMENT NO. \_\_\_\_\_

STATEMENT OF EVIDENCE

See Tie Sheet No. 291