

CERTIFICATE OF LOCATION OF GOVERNMENT CORNER

SOUTHWEST Corner of Section 33, Township 39, Range 24, 4TH P.M.
 STATE OF MINNESOTA, County of KANABEC

At the corner location shown on the sketch:
 On 03/26/2002 Found a 1/2" IRON PIN MONUMENT.
 Said monument was as found.

Kanabec County U.S. Survey Feet Coordinates
 NAD 1983, HARN 1996 Adjustment
 Obtained by RTK GPS Observation

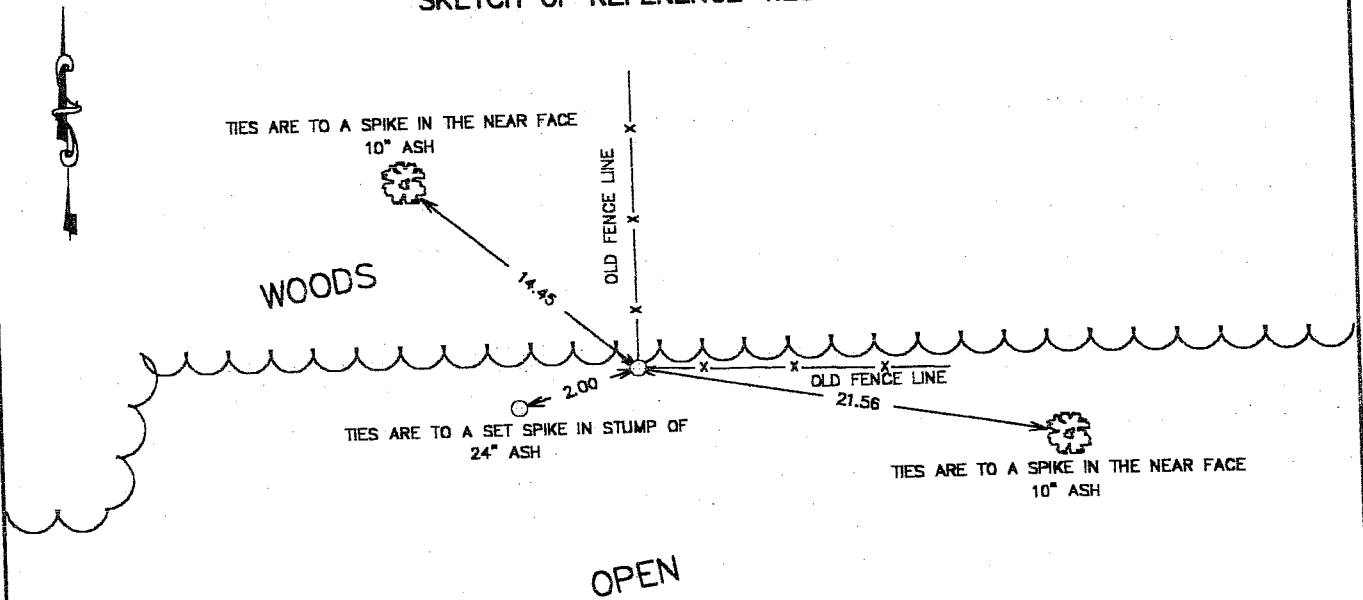
Northing= 132049.228

Easting= 385753.903

Note: NAD 1983, HARN 1996 Adjustment
 coordinates are NOT compatible with
 NAD 1983 coordinates

Note: 1 Meter=3937/1200 U.S. Survey Feet

SKETCH OF REFERENCE TIES



Statement of evidence relative to this corner location is on back of page.

I hereby certify that this document and the data contained herein was prepared by me or under my direct supervision.

 Signature Date

Registration No. _____

Land Surveyor, Professional Engineer

County Surveyor, County Engineer

OFFICE OF THE COUNTY RECORDER

County of _____

I hereby certify that this document was filed in the County Recorder's office at _____ M. on the _____ day of _____ A.D., 20____

County Recorder _____ Deputy _____

BY _____

DOCUMENT NO. _____

STATEMENT OF EVIDENCE

All of the original government bearing trees are now gone.

In 1910, the former County Surveyor, John Nelson, set a sandstone with a "+" marked in the top at this corner.

In 1967, the D.N.R. made an excavation for this corner and found the point of a rotted post 3 feet below the surface and set an iron pin to mark this corner.

In 1979, Don Hanson, a Registered Land Surveyor No. 9260, found the iron pin set by the D.N.R. and used this location in a survey to the east.

In July of 1990, I found the iron pin set by D.N.R. and used by Don Hanson.

The iron pin location fit the distances along the township line that John Nelson's notes show from 1910, quite well. The iron pin location fits the old fence lines and was accepted as the best available evidence of the original corner location.