

# CERTIFICATE OF LOCATION OF GOVERNMENT CORNER

SOUTH QUARTER Corner of Section 32, Township 39, Range 24, 4TH P.M.  
~~NORTH QUARTER Corner of Section 35, Township 39, Range 24, 4TH P.M.~~

STATE OF MINNESOTA, County of KANABEC

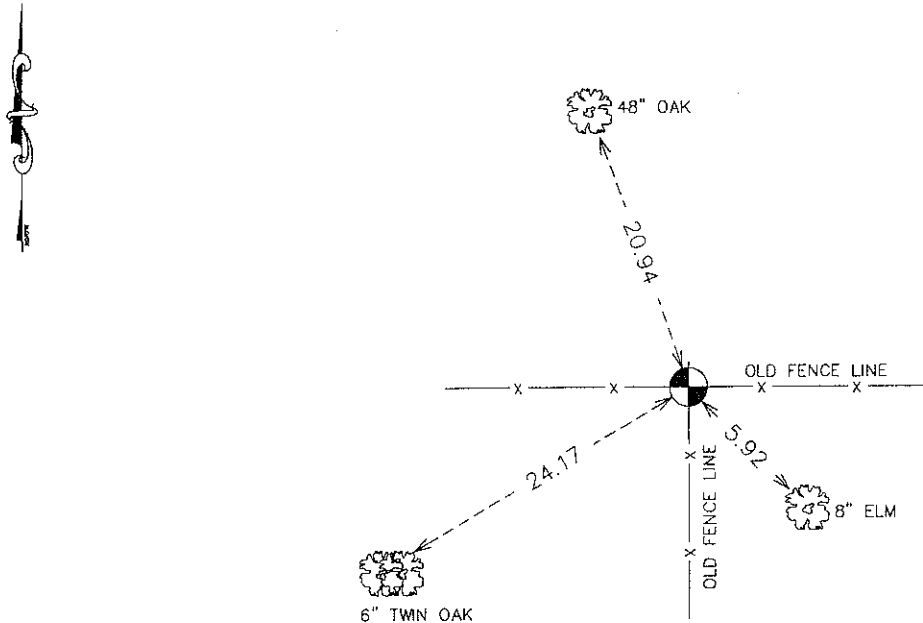
At the corner location shown on the sketch:  
FOUND REBAR WITH ALUMINUM CAP.

Kanabec County U.S. Survey Feet Coordinates  
NAD 1983, HARN 1996 Adjustment  
Obtained by RTK GPS Observation

Northing= 132068.16  
Easting= 383115.67

Note: NAD 1983, HARN 1996 Adjustment  
coordinates are NOT compatible with  
NAD 1983 coordinates  
Note: 1 Meter=3937/1200 U.S. Survey Feet

## SKETCH OF REFERENCE TIES



Statement of evidence relative to this corner location is on back of page.

I hereby certify that this document and the data contained herein was prepared by me or under my direct supervision.

Ernest J. Rud 12-23-10  
Signature Date

Registration No. 9800

Land Surveyor,  Professional Engineer  
 County Surveyor,  County Engineer

## OFFICE OF THE COUNTY RECORDER

County of \_\_\_\_\_

I hereby certify that this document was filed in the County Recorder's office at \_\_\_\_\_ M. on the

\_\_\_\_\_ day of \_\_\_\_\_ A.D., 20\_\_\_\_

County Recorder \_\_\_\_\_

BY \_\_\_\_\_ Deputy

DOCUMENT NO. \_\_\_\_\_

S1/4 CORNER, SEC. 32, T39, R24  
N1/4 CORNER, SEC. 05, T38, R24

**STATEMENT OF EVIDENCE**

**ALL OF THE ORIGINAL BEARING TREES ARE NOW GONE.**

**IN 1910, THE FORMER COUNTY SURVEYOR, JOHN NELSON, SET A SANDSTONE WITH A "+" IN THE TOP AT THIS CORNER. IT WAS ON LINE AND SPLIT BETWEEN THE NE AND NW CORNERS OF SEC. 5.**

**IN 1967, THE DNR MADE A SURVEY IN SEC. 32, T39, R24, BUT DID NOT FIND OR SET THIS CORNER. THE RECORDS SHOW THAT THEY USED A LINE AND SPLIT BETWEEN THE SE AND SW CORNERS OF SEC. 32.**

**IN 1979, DON HANSON, REGISTERED LAND SURVEYOR NO. 9260, USED THE BASE OF A FENCE POST IN A SURVEY OF SEC. 33, T39, R24.**

**IN JULY OF 1990, M.B. RUDE FOUND THE BASE OF A POINTED POST USED BY DON HANSEN. A SEARCH WAS MADE FOR HANSEN'S SANDSTONE, BUT NO EVIDENCE OF THE SANDSTONE WAS FOUND.**

**THE FOUND POST LOCATION FITS A SPLIT BETWEEN THE IRON PIN AT THE NE CORNER AND THE CENTERLINE INTERSECTION OF THE NORTH-SOUTH ROAD AND FENCE LINES EAST-WEST AT THE ASSUMED NW CORNER OF SEC. 5. THIS LOCATION IS 4.72 FEET SOUTH OF A STRAIGHT LINE.**

**THIS LOCATION WAS ACCEPTED AS THE BEST AVAILABLE EVIDENCE OF THE ORIGINAL CORNER LOCATION.**

**IN 2001, E.G. RUD AND SONS, INC. FOUND THIS MONUMENT AND ESTABLISHED KANABEC COUNTY COORDINATES ON THIS LOCATION.**