

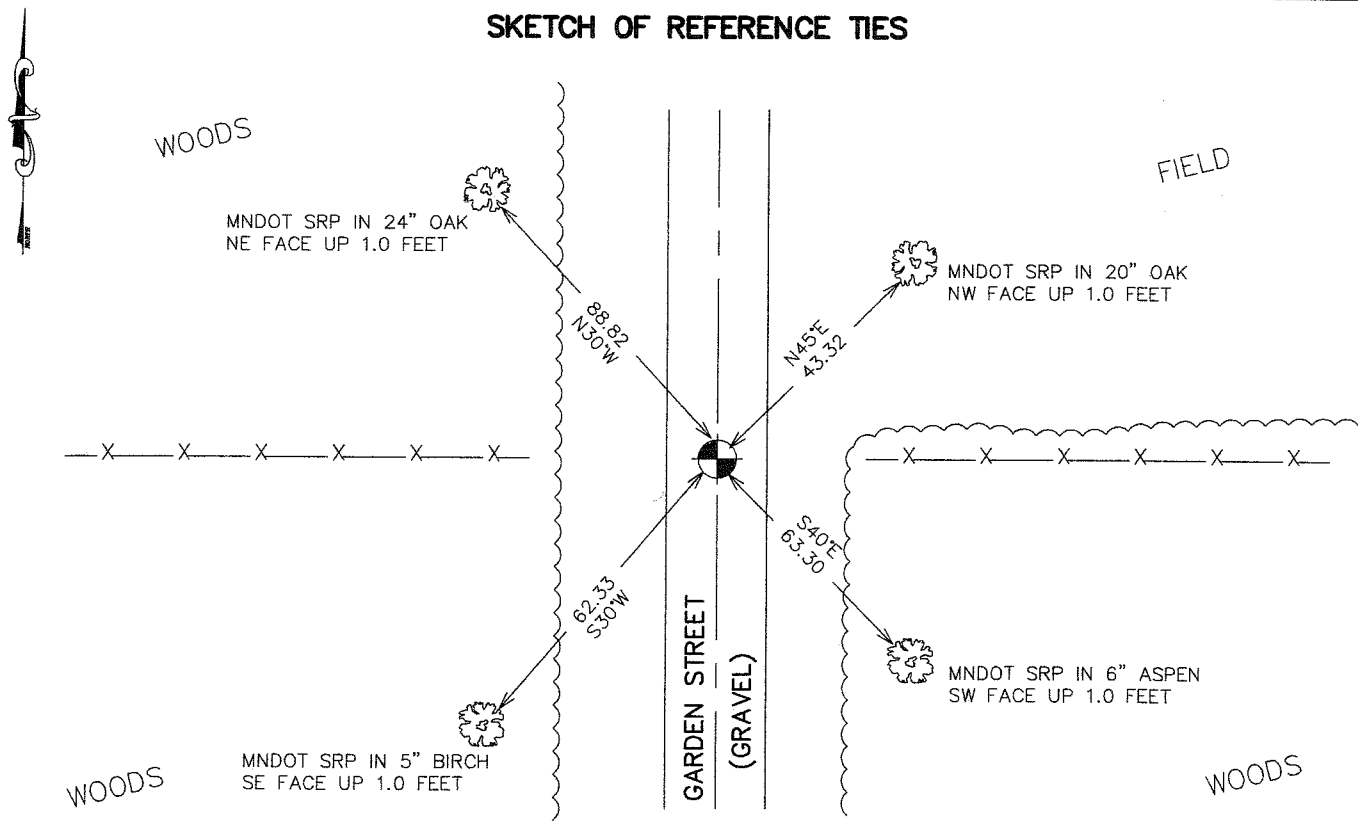
CERTIFICATE OF LOCATION OF GOVERNMENT CORNER

SOUTHWEST Corner of Section 31, Township 39, Range 24, 4TH P.M.
 STATE OF MINNESOTA, County of KANABEC

At the corner location shown on the sketch:
 FOUND THIS MONUMENT
 AND ESTABLISHED KANABEC COUNTY COORDINATES ON ITS LOCATION.

Kanabec County U.S. Survey Feet Coordinates
 NAD 1983, HARN 1996 Adjustment
 Obtained by RTK GPS Observation
 Northing= 132091.570
 Easting= 375333.680
 Note: NAD 1983, HARN 1996 Adjustment
 coordinates are NOT compatible with
 NAD 1983 coordinates
 Note: 1 Meter=3937/1200 U.S. Survey Feet

SKETCH OF REFERENCE TIES



Statement of evidence relative to this corner location is on back of page.

I hereby certify that this document and the data contained herein was prepared by me or under my direct supervision.
Ernst Hlub
 Signature 5-02-2007
 Date

Registration No. Miam No 9808

Land Surveyor, Professional Engineer
 County Surveyor, County Engineer

OFFICE OF THE COUNTY RECORDER

County of _____

I hereby certify that this document was filed in the County Recorder's office at _____ M. on the _____ day of _____ A.D., 20____

County Recorder _____
 BY _____ Deputy

DOCUMENT NO. _____

SOUTHWEST CORNER SECTION 31, T39, R24

STATEMENT OF EVIDENCE

The original public land survey was run in 1849 by Mr. J. Smith, Deputy Surveyor, and a wood post was set to mark the corner. Bearing ties were made to one aspen, one white oak, and two birch trees.

In an undated survey for the County Board, in Surveyor's Record Book A, Page 262, by T.B. Vickery, Surveyor, the West lines of Section 31, T. 39, R. 24, and Sections 6 and 7, T. 38, R. 24 were run in. He does not say what was found or set for the corners.

In 1901, former County Surveyor, John Nelson, made a Township Road Order survey along the North line of Section 6, T. 38, R. 24, recorded in Road Record No 2, Page 309. He does not say what was found or set for the corners.

In 1912, former County Surveyor, John Nelson, made a Township Road Order survey along the South line of Section 1, T. 38, R. 25, recorded in Surveyor's Record Book A, Page 117. The survey started at a good "Government Corner, being the Township Corner."

On November 16, 1999, The Minnesota Department of Transportation excavated a six foot x 10 foot x 4 foot deep area on the centerline of Garden Street, and recovered a 1 foot x 1 foot x 2 foot square sandstone at the intersection of the centerline of North and South Garden Street, and fence lines East and West. The Minnesota Department of Transportation then set a Cast Iron Monument on top of the sandstone, 0.40 feet below the surface. New bearing ties were made to an aspen, a birch, and two oak trees. The Minnesota Department of Transportation accepts this position as the correct location for the corner.

For details and survey analysis, contact the Minnesota Department of Transportation District Surveys Office in Baxter, Minnesota.

In 2005 E.G. Rud and Sons found this corner and established Kanabec County Coordinates on this position using G.P.S. equipment.