

3925002  
3924036

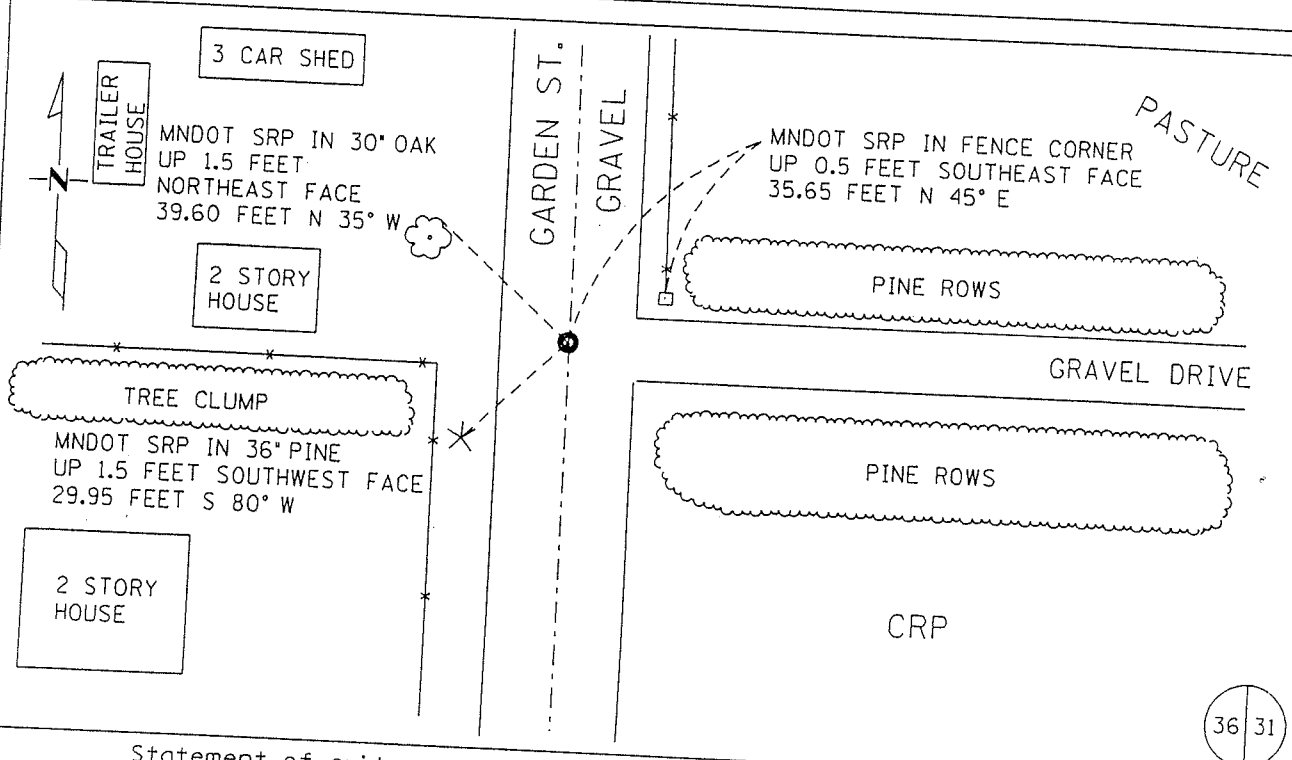
KANABEC COUNTY RECORDER  
Filed 8-28-02 at 12:00 M  
Rhonda A. Olson County Recorder  
By R. Delmbrecht Deputy

# CERTIFICATE OF LOCATION OF GOVERNMENT CORNER

EAST QUARTER CORNER of Section 36, Township 39N, Range 25W  
4 TH Principal Meridian, State of Minnesota, County of KANABEC

At the corner location shown on the sketch:

- On 11/16/99 found a SANDSTONE DOWN 1.0 FOOT ON CENTERLINE  
DATE
- left monument as found     lowered monument     removed monument (explain)
- On 11/16/99 placed a MINNESOTA HIGHWAY DEPT. CIM DOWN 0.5 FEET  
DATE  
ON TOP OF SANDSTONE.



36 | 31

Statement of evidence for this corner location is on back of this page.

I hereby certify that this document was researched and prepared by me or under my direct supervision.

Signature [Signature] MNDOT Date 8-28-2002 License No. 40343  
 Title:  Land Surveyor     Professional Engineer     County Surveyor     County Engineer

**Statement of Evidence:** East Quarter Corner of Section 36, Township 39 North, Range 25 West, 4<sup>th</sup> Principal Meridian, Kanabec County, Minnesota.

The original public land survey was run in 1849 by Mr. J. Smith, Deputy Surveyor, and a wood post was set to mark the corner. Bearing ties were made to two sugar maples.

In an undated survey, for the County Board, in Surveyor's Record Book A, Page 262, by T.B. Vickery, Surveyor, the West lines of Section 31, T. 39, R. 24, and Sections 6 and 7, T. 38, R. 24, were run in. He did not say what was found or set for the corners.

In 1999-2002, The Minnesota Department of Transportation made a survey around Section 36 to locate the existing monuments, lines of occupation, and search areas. This corner falls on the centerline of North-South Garden Street, and a fence line West.

On November 16, 1999, The Minnesota Department of Transportation excavated and recovered a sandstone, down 1.1 feet, and set a cast iron monument on top of the found stone to mark the corner. The top of the cast iron monument is down 0.5 feet. New bearing ties were made to an oak tree, a pine tree, and a fence post. The Minnesota Department of Transportation accepts this position as the correct location for the corner.

For details and survey analysis, contact the Minnesota Department of Transportation District Surveys Office in Baxter, Minnesota.