

3925003

3924035

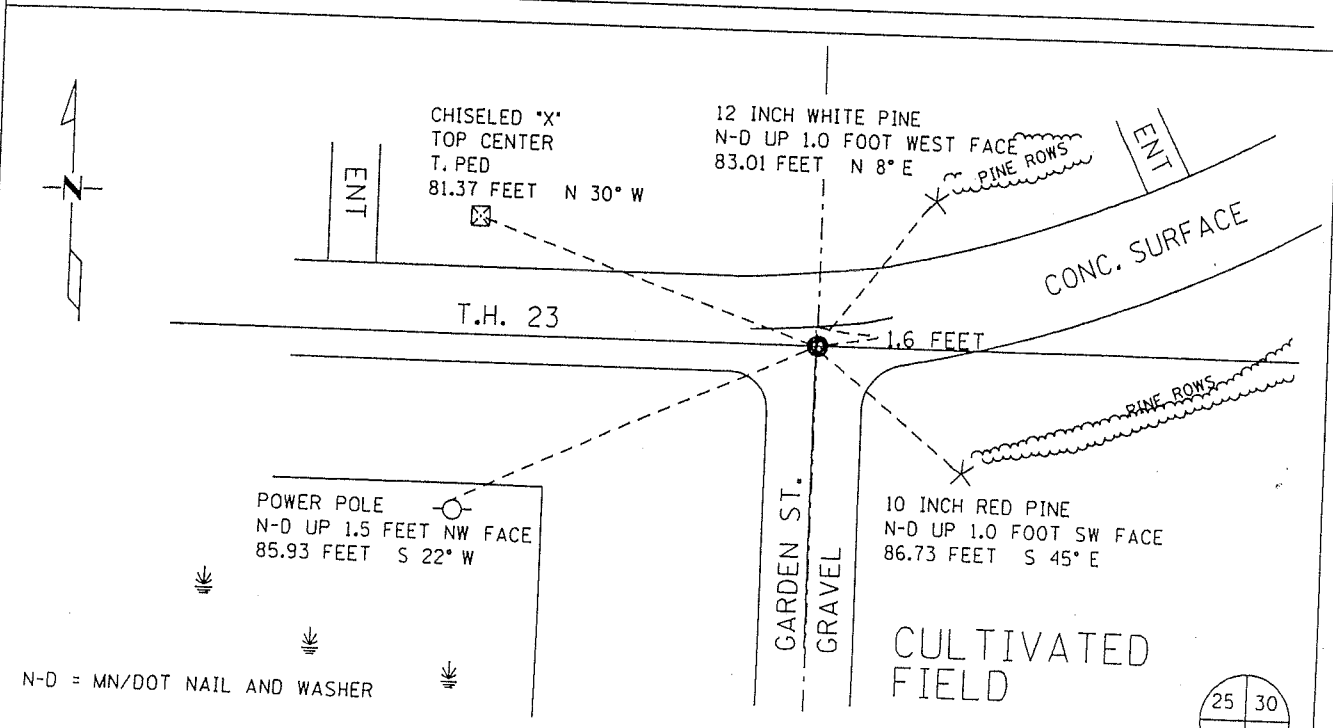
KANABEC COUNTY RECORDER
Filed 8-28-02 at 12:00 P
Rhonda A. Olson County Recorder
By K. Delmbeck Deputy

CERTIFICATE OF LOCATION OF GOVERNMENT CORNER

NORTHEAST CORNER _____ of Section 36, Township 39N, Range 25W
4 TH Principal Meridian, State of Minnesota, County of KANABEC

At the corner location shown on the sketch:

- On 1999-2001 found a NOTHING
DATE
- left monument as found lowered monument removed monument (explain)
- On 1/15/2002 placed a 3/4 INCH X 24 INCH IRON PIN WITH AN ALUM. CAP DOWN 0.06 FEET
DATE



25	30
36	31

Statement of evidence for this corner location is on back of this page.

I hereby certify that this document was researched and prepared by me or under my direct supervision.

Signature [Signature] MNDOT Date 8-28-2002 License No. 40343
 Title: Land Surveyor Professional Engineer County Surveyor County Engineer

Statement of Evidence: Northeast Quarter Corner of Section 36, Township 39 North, Range 25 West, 4th Principal Meridian, Kanabec County, Minnesota.

The original public land survey was run in 1851 by Mr. J. Smith, Deputy Surveyor, and a wood post was set to mark the corner. Bearing ties were made to four pines.

In an undated survey, for the County Board, in Surveyor's Record Book A, Page 262, by T.B. Vickery, Surveyor, the West lines of Sections 31, T. 39 N., R. 24 W., and Sections 6 and 7, T. 38 N., R. 24 W. were run in. He did not say what was found or set for the corners.

In 1901, former County Surveyor, John Nelson, made a Township Road Order Survey in Section 31, T. 39, R. 24.

In 1943, The Minnesota Department of Transportation shows the corner at P.O.S.T. 66.3 feet ahead of P.I. 742+28.3. "assumed corner" at intersections of T.H. 23 and a fence North and a road South, in Book No. 6 of alignment for S.P. 3301-02 TH 23 "Lw" line from station 683+03.8 to station 1014+11.2.

In 1999-2002, The Minnesota Department of Transportation made a survey around Section 36 to locate the existing monuments, lines of occupation, and search areas. This corner falls near the intersection of T.H. 23 and Garden Street South.

In January, 2002, The corner location was determined using found alignment monuments as shown on the Minnesota Department of Transportation Right of Way Map for S.P. 3301, T.H. 23, Index file no. 13-30. On January 15, 2002, The Minnesota Department of Transportation set a ¾ inch x 24 inch iron pin with an aluminum cap to mark the corner. New reference ties were made to two pine trees, a power pole, and a telephone pedestal. The Minnesota Department of Transportation accepts this position as the correct location for the corner.

For details and survey analysis, contact the Minnesota Department of Transportation District Surveys Office in Baxter, Minnesota.