

CERTIFICATE OF LOCATION OF GOVERNMENT CORNER

WEST QUARTER Corner of Section 30 , Township 39 , Range 24 , 4TH P.M.
 EAST QUARTER Corner of Section 25 , Township 39 , Range 25 , 4TH P.M.

STATE OF MINNESOTA, County of KANABEC

At the corner location shown on the sketch:
 ON 1/1/2004 SET A 1/2" BY 4' IRON PIPE IN
 CENTERLINE OF DITCH.

Kanabec County U.S. Survey Feet Coordinates
 NAD 1983, HARN 1996 Adjustment
 Obtained by RTK GPS Observation

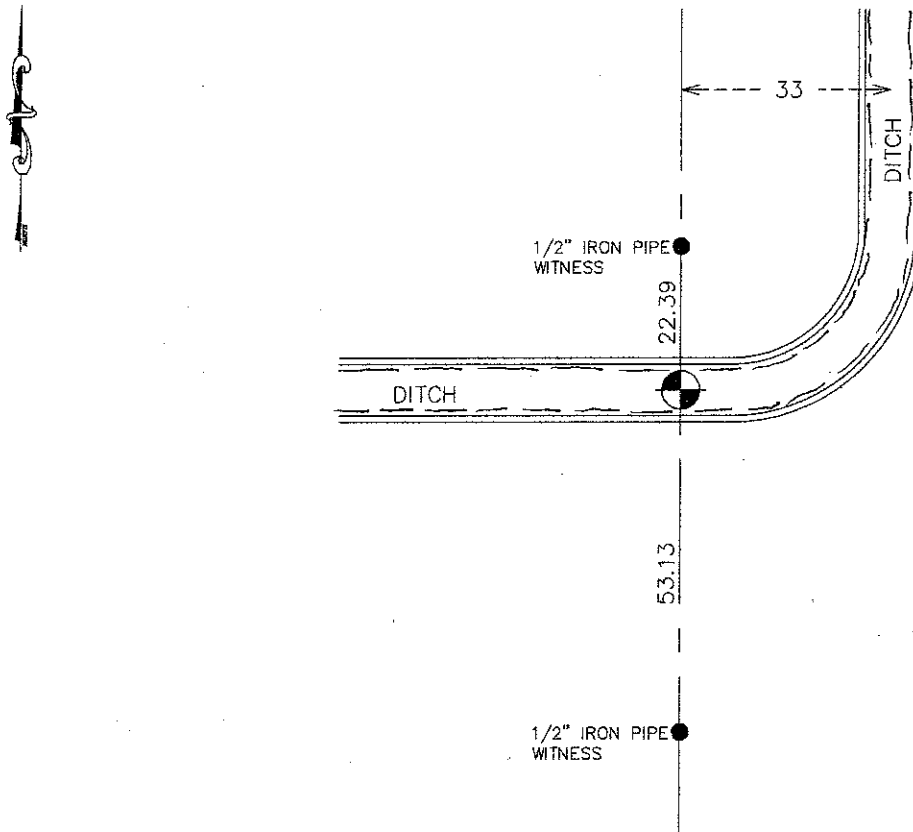
Northing= 140021.755

Easting= 375345.546

Note: NAD 1983, HARN 1996 Adjustment
 coordinates are NOT compatible with
 NAD 1983 coordinates

Note: 1 Meter=3937/1200 U.S. Survey Feet

SKETCH OF REFERENCE TIES



Statement of evidence relative to this corner location is on back of page.

I hereby certify that this document and the data
 contained herein was prepared by me or under
 my direct supervision.

Ernest Rud
 Signature

7-18-2011
 Date

Registration No. 9808

- Land Surveyor, Professional Engineer
 County Surveyor, County Engineer

OFFICE OF THE COUNTY RECORDER

County of _____

I hereby certify that this document was filed in
 the County Recorder's office at _____ M. on the

_____ day of _____ A.D., 20____

County Recorder _____

BY _____ Deputy

DOCUMENT NO. _____

W1/4 CORNER, SEC. 30, T39, R24

E1/4 CORNER, SEC. 25, T39, R25

STATEMENT OF EVIDENCE

STATEMENT OF EVIDENCE

THE ORIGINAL GOVERNMENT POST WAS SET ON SEPT. 14, 1849 AND 2 BEARING TREES NOTED AS:

12" PINE @ 700 LINKS BEARING S5°W

11" PINE @ 670 LINKS BEARING S2.5°E

NO VISIBLE EVIDENCE REMAINS FOR THE POST OR BEARING TREES.

THERE IS A ROAD OPENING DATED SEPT. 27, 1895 ON FILE AT THE COUNTY AUDITOR'S OFFICE RUNNING FROM THE SW CORNER OF SEC. 31 TO THE W1/4 CORNER OF SEC. 31. NELS SJODINE JR. SIGNED AS SURVEYING THIS 1.5 MILES BUT DOESN'T SHOW DISTANCES OR IF MONUMENTS WERE SET.

ON PAGE 262 OF BOOK A OF SURVEYS AN UNDATED SURVEY BY T.B. VICKEREY IS FILED FOR A ROAD OPENING FROM THE NW CORNER OF SEC. 31, T39, R24 TO SW CORNER OF SEC. 6, T38, R24.

IN BOOK A OF SURVEYS, PAGE 258, A SURVEY OF THE W1/2 OF SEC. 30, T39, R24 BY T.B. VICKEREY IS FILED, DATE MARCH 1, 1900. THERE IS NO MENTION OF WHAT WAS SET AT ANY OF THE SECTION CORNERS.

MAPS OF COUNTY DITCH NO. 11 DATED MAY 10, 1917 AT THE COUNTY ENGINEER'S OFFICE SHOW THIS DITCH TO BE 33 FEET EAST OF THE SECTION LINE AND ON THE E-W QUARTER LINE OF SEC. 25.

IN JAN. 2004 E.G.RUD AND SONS, INC. RAN A SURVEY AROUND SEC. 25 AND 26 TO LOCATE LINES OF OCCUPATION AND EXISTING MONUMENTATION. THE NW CORNER OF SEC. 30 WAS SET BY M.B. RUDE AND THE SW CORNER WAS SET BY THE MN HWY DEPT. WE SET A POINT ON LINE AND EQUIDISTANT BETWEEN THESE TWO CORNERS. THIS FELL IN THE E-W DITCH AND 33 FEET WEST OF THE N-S DITCH. A 1/2 INCH BY 4 FOOT PIPE WAS SET AT THIS LOCATION AND WITNESS CORNERS WERE SET NORTH AND SOUTH OF THE CORNER.