

# CERTIFICATE OF LOCATION OF GOVERNMENT CORNER

NORTHEAST Corner of Section 25, Township 39, Range 25, 4TH P.M.

STATE OF MINNESOTA, County of KANABEC

At the corner location shown on the sketch:  
On 06/ /2003 Found a Kanabec County Monument.

Kanabec County U.S. Survey Feet Coordinates  
NAD 1983, HARN 1996 Adjustment  
Obtained by RTK GPS Observation

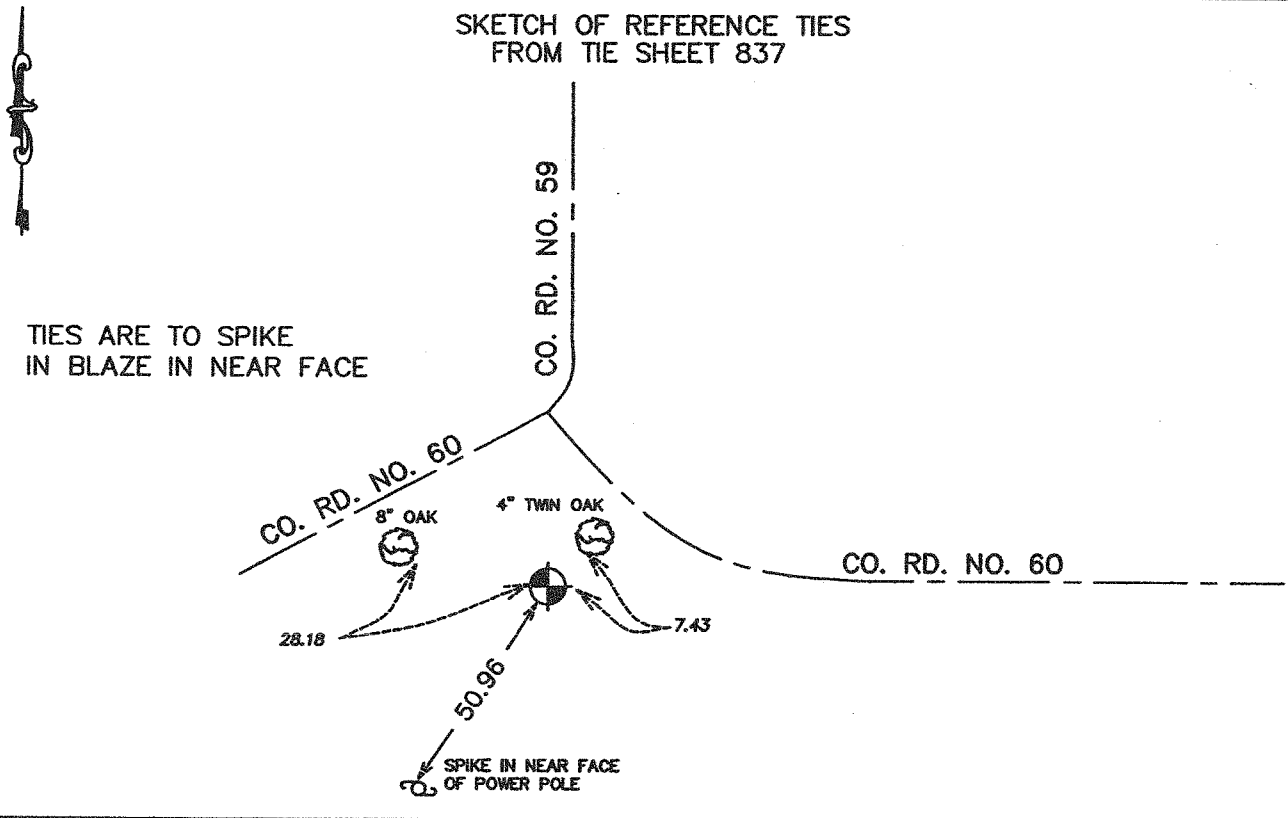
Northing= 142691.47

Easting= 375328.37

Note: NAD 1983, HARN 1996 Adjustment  
coordinates are NOT compatible with  
NAD 1983 coordinates

Note: 1 Meter=3937/1200 U.S. Survey Feet

SKETCH OF REFERENCE TIES  
FROM TIE SHEET 837



TIES ARE TO SPIKE  
IN BLAZE IN NEAR FACE

Statement of evidence relative to this corner location is on back of page.

I hereby certify that this document and the data contained herein was prepared by me or under my direct supervision.

*Ernest J. Lund*  
Signature

7-17-2007  
Date

Registration No. 9808

Land Surveyor,     Professional Engineer

County Surveyor,     County Engineer

## OFFICE OF THE COUNTY RECORDER

County of \_\_\_\_\_

I hereby certify that this document was filed in the County Recorder's office at \_\_\_\_\_ M. on the

\_\_\_\_\_ day of \_\_\_\_\_ A.D., 20\_\_\_\_

County Recorder \_\_\_\_\_

BY \_\_\_\_\_ Deputy

DOCUMENT NO. \_\_\_\_\_

STATEMENT OF EVIDENCE  
(FROM TIE SHEET 824)

NE CORNER SEC. 25-39-25

All of the original bearing trees are now gone.

There is no resurvey data on file for this corner.

In February of 1990, we ran a survey around Sections 23, 24, 25 and 26, Township 39, Range 25, to locate existing monuments, lines of occupation and search areas.

This corner was set at the intersection of the extension of the centerline of roads north and east.

No excavation was made in this location.

(2003)

In June 2003 we ran a survey around Sections 25 and 26 and found this monument. We established Kanabec County Coordinates on this corner using GPS equipment.