

CERTIFICATE OF LOCATION OF GOVERNMENT CORNER

West $\frac{1}{4}$ EAST QUARTER CORNER OF SECTION 1924, TOWNSHIP 3939, RANGE 2425, 4TH PM.

STATE OF MINNESOTA, COUNTY OF KANABEC

AT THE CORNER LOCATION SHOWN ON THE SKETCH:

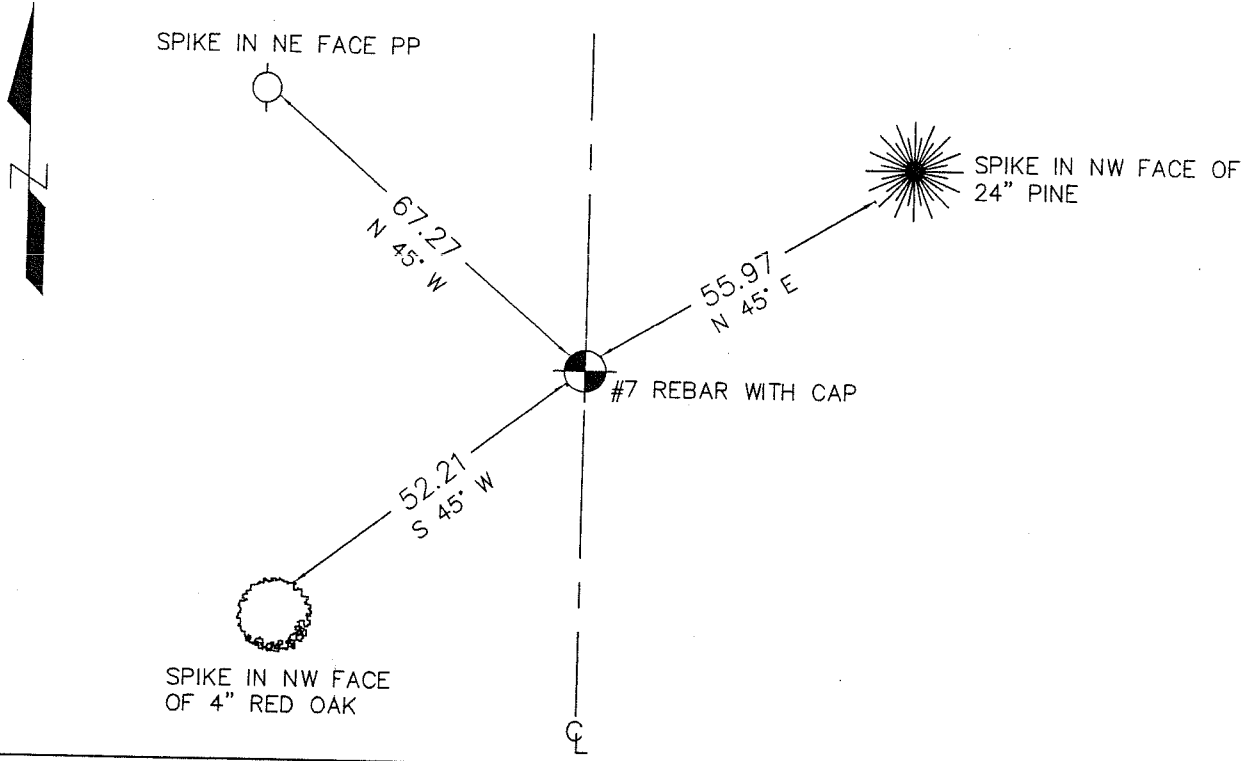
ON 05/ /04 SET
KANABEC COUNTY MONUMENT

KANABEC COUNTY U.S. SURVEY
FEET COORDINATES
NAD 1983, HARN 1996
ADJUSTMENT OBTAINED BY RTK
GPS OBSERVATION
NORTHING= 145339.32

NOTE: NAD 1983, HARN 1996
ADJUSTMENT COORDINATES ARE
NOT COMPATIBLE WITH NAD 1983
COORDINATES
EASTING= 375356.95

NOTE: 1 METER= $\frac{3937}{1200}$ U.S. SURVEY FEET

SKETCH OF REFERENCE TIES



STATEMENT OF EVIDENCE RELATIVE TO THIS CORNER LOCATION IS ON THE BACK OF THIS PAGE

I HEREBY CERTIFY THAT THIS DOCUMENT AND THE DATA CONTAINED HEREIN WAS PREPARED BY ME OR UNDER MY DIRECT SUPERVISION.

Ernst Illud 11-18-2005
SIGNATURE DATE

REGISTRATION NO. Minn No 9808

- LAND SURVEYOR
- COUNTY SURVEYOR
- PROF. ENGINEER
- COUNTY ENGINEER

OFFICE OF THE COUNTY RECORDER

COUNTY OF _____

I HEREBY CERTIFY THAT THIS DOCUMENT WAS FILED IN THE COUNTY RECORDER'S OFFICE AT _____ M. ON THE _____ DAY OF _____, 2____.

COUNTY RECORDER _____

BY _____, DEPUTY

DOCUMENT NO. _____

STATEMENT OF EVIDENCE

This corner was set by Deputy Surveyor Silas Barnard in July of 1855. Evidence of the corner post or bearing trees no longer remain. There are no surveys on record at the County Offices. In November 2003, we ran a survey around Section 24, 25, and 26 to locate existing monumentation and tie in lines of occupation. There were no lines of occupation at this corner, which falls on the centerline of a north-south gravel road. At the $\frac{1}{4}$ corners north and south of this quarter corner were old fences. We doubled these distances down to the quarter corner from these fences and the two locations fell within 0.5 feet of each other. We set this corner on line between the Northeast and Southeast corners of Section 24 and at the doubled distances.

In May 2004, we excavated an area 9' by 20' by 3' deep. No evidence was found. We set a Kanabec County monument, took ties and established Kanabec County coordinates on the position.