

# CERTIFICATE OF LOCATION OF GOVERNMENT CORNER

SOUTHWEST Corner of Section 07, Township 39, Range 24, 4TH P.M.  
 STATE OF MINNESOTA, County of KANABEC

At the corner location shown on the sketch:  
 ON 11/1/10 FOUND CAST ALUMINUM MONUMENT (BADLY CORRODED)

Kanabec County U.S. Survey Feet Coordinates  
 NAD 1983, HARN 1996 Adjustment  
 Obtained by RTK GPS Observation

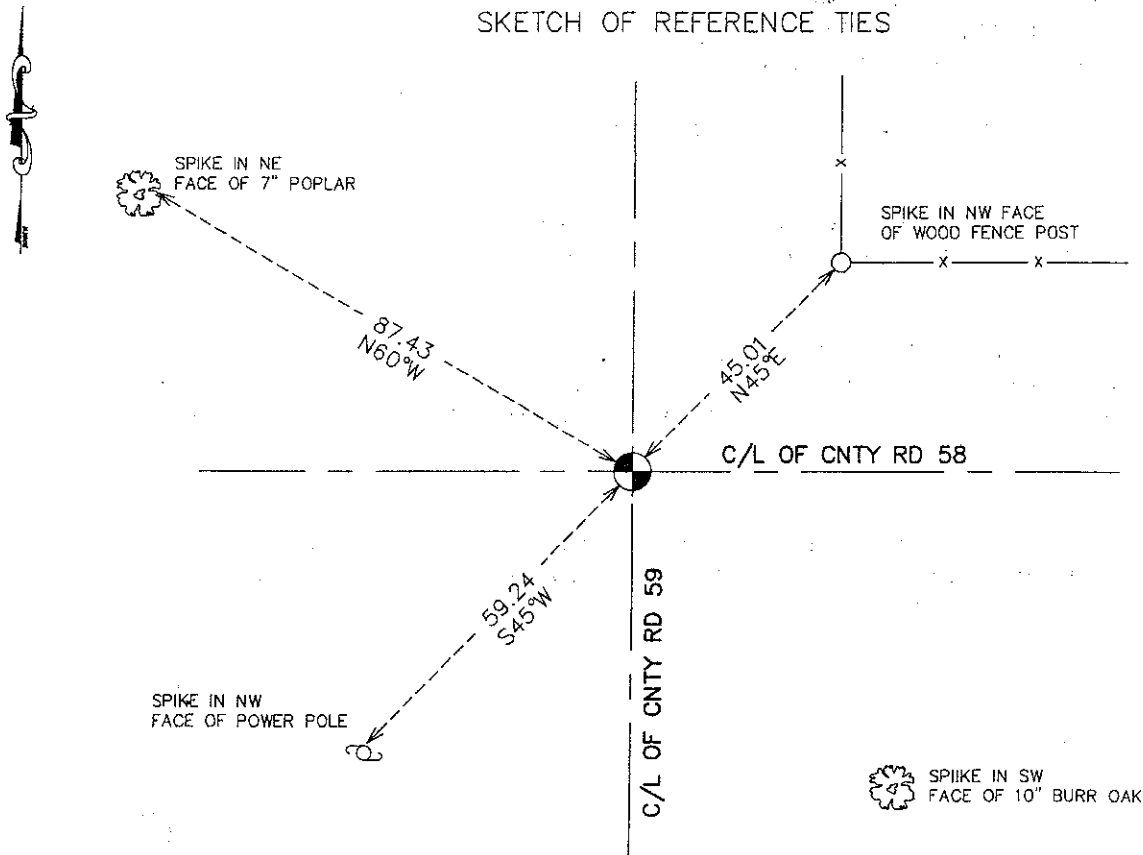
Northing= 153306.128

Easting= 375418.391

Note: NAD 1983, HARN 1996 Adjustment  
 coordinates are NOT compatible with  
 NAD 1983 coordinates

Note: 1 Meter=3937/1200 U.S. Survey Feet

## SKETCH OF REFERENCE TIES



Statement of evidence relative to this corner location is on back of page.

I hereby certify that this document and the data contained herein was prepared by me or under my direct supervision.

Ernest Rud  
 Signature

11-26-2010  
 Date

Registration No. 9808

Land Surveyor,  Professional Engineer

County Surveyor,  County Engineer

## OFFICE OF THE COUNTY RECORDER

County of \_\_\_\_\_

I hereby certify that this document was filed in the County Recorder's office at \_\_\_\_\_ M. on the

\_\_\_\_\_ day of \_\_\_\_\_ A.D., 20\_\_\_\_

County Recorder \_\_\_\_\_

BY \_\_\_\_\_ Deputy

DOCUMENT NO. \_\_\_\_\_

SW CORNER, SEC. 7, T39, R24

**STATEMENT OF EVIDENCE**

**SEPT. 14, 1849**

**ORIGINAL GOV'T POST ST ON TOWNSHIP LINE. 4 BEARING TREES ESTABLISHED:**

**12" SUGAR MAPLE @ 16 LINKS BEARING N71°W**

**11" ELM @ 33 LINKS BEARING S42.5°W**

**12" POPLAR @ 31 LINKS BEARING S14°E**

**15" BUTTERNUT @ 33 LINKS BEARING N25°E**

**NO EVIDENCE OF POST OR BEARING TREES REMAIN**

**JUNE 26, 1902**

**ROAD OPENING ALONG WEST SIDE OF SEC. 18 FILED IN COUNTY AUDITOR'S OFFICE. JOHN NELSON MEASURED THE WEST LINE OF SEC. 18 TO BE 80.2 CHAINS.**

**OCT. 20, 1975**

**M.B. RUDE FOUND A SANDSTONE WITH A CHISELED "X" AT THE INTERSECTION OF THE N-S CENTERLINE AND THE E-W CENTERLINE OF ROADS. M.B. RUDE SET A CAST ALUMINUM MONUMENT WITH MAGNETS AND TOOK TIES RECORDED ON CERTIFICATE OF LOCATION NO. 355**

**NOV. 2, 2010**

**E.G. RUD AND SONS, INC. FOUND CAST ALUMINUM MONUMENT DOWN 8" IN THE CENTERLINE OF ROADS. NEW TIES TAKEN AND KANABEC COUNTY COORDINATES ESTABLISHED ON THIS POSITION.**