

CERTIFICATE OF LOCATION OF GOVERNMENT CORNER

NORTHWEST Corner of Section 7, Township 39, Range 24, 4TH P.M.

STATE OF MINNESOTA, County of KANABEC

At the corner location shown on the sketch:
On 05/29/2003 Found a 4" by 17" Cast Iron Monument.

Kanabec County U.S. Survey Feet Coordinates
NAD 1983, HARN 1996 Adjustment
Obtained by RTK GPS Observation

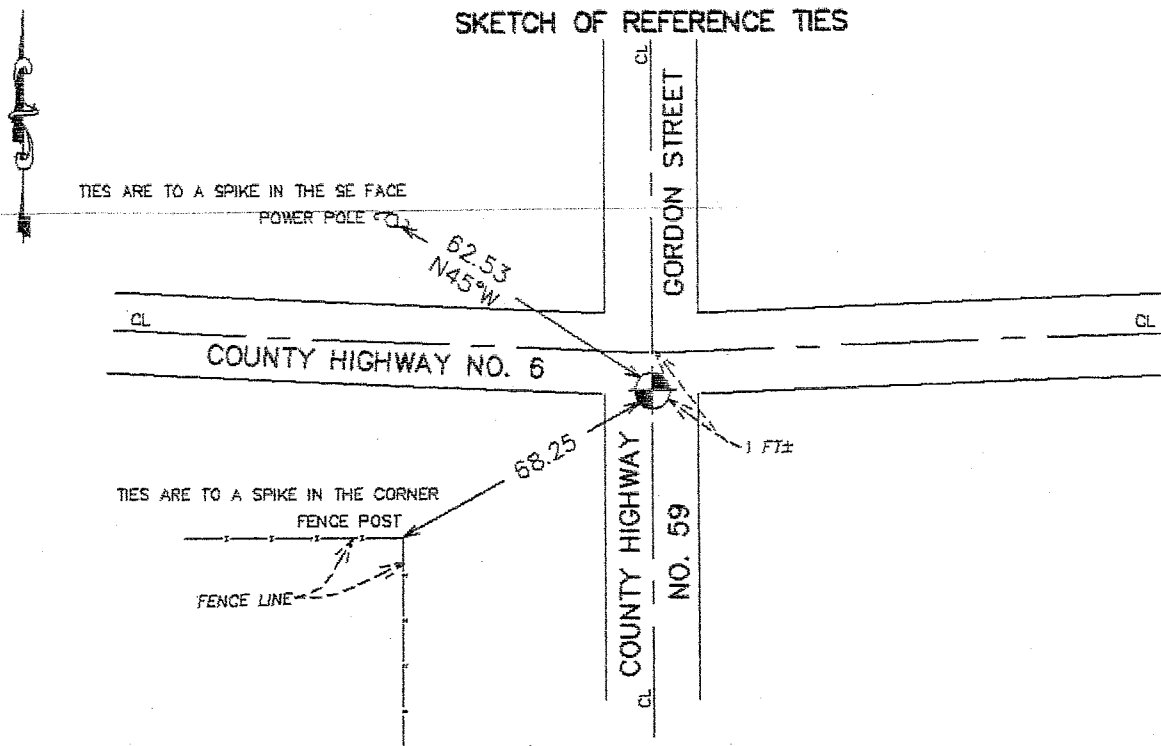
Northing= 158468.557

Easting= 375415.627

Note: NAD 1983, HARN 1996 Adjustment
coordinates are NOT compatible with
NAD 1983 coordinates

Note: 1 Meter=3937/1200 U.S. Survey Feet

SKETCH OF REFERENCE TIES



Statement of evidence relative to this corner location is on back of page.

I hereby certify that this document and the data contained herein was prepared by me or under my direct supervision.

Ernest J. Reed
Signature

7-08-2003
Date

Registration No. 9808

Land Surveyor, Professional Engineer

County Surveyor, County Engineer

OFFICE OF THE COUNTY RECORDER

County of _____

I hereby certify that this document was filed in the County Recorder's office at _____ M. on the _____ day of _____ A.D., 20____

County Recorder _____

BY _____ Deputy

DOCUMENT NO. _____

STATEMENT OF EVIDENCE

FROM TIE SHEET NO. 652

All of the original bearing trees are now gone.

In 1904, John Nelson, County Surveyor in a road survey, set a sandstone marked "+" and tied to a 22" pine stump. This stump is now gone. In 1925, George Jenks County Surveyor, set a sandstone marked "+" and tied to a power pole a fence corner and a 10" poplar. These ties are now gone.

This corner falls at the intersection of roads east-west-north and south.

In August, 1982, we made an excavation with the county backhoe 15 feet square, 3 feet deep, and it appears this area was cut in road construction as natural ground was not visible in the excavation. No sandstones were found.

We found a spike on the surface of the blacktop in the center line of existing roads.

At 1 foot below the surface we found a 10" spike which fits the P.I. of the Highways east and west and was accepted as the best available evidence of the original corner location. We set a 4" by 17" cast iron monument at this location.

May 2003

Found monument, took new field ties and established Kanabec County coordinates on monument.