

# CERTIFICATE OF LOCATION OF GOVERNMENT CORNER

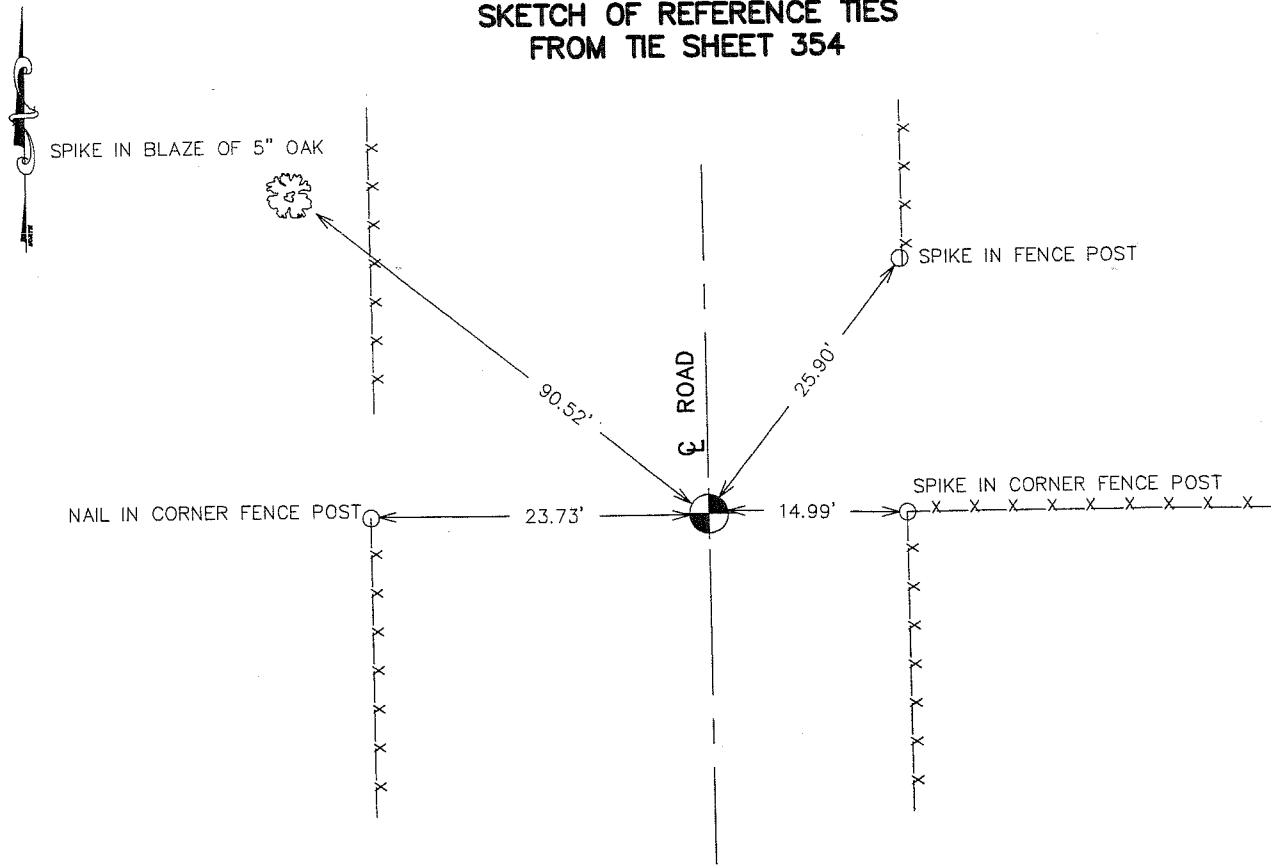
WEST QUARTER Corner of Section 06, Township 39, Range 24, 4TH P.M.

STATE OF MINNESOTA, County of KANABEC

At the corner location shown on the sketch:  
IN AUGUST 2004 FOUND THIS MONUMENT  
AND ESTABLISHED G.P.S. COORDINATES ON ITS LOCATION.

Kanabec County U.S. Survey Feet Coordinates  
NAD 1983, HARN 1996 Adjustment  
Obtained by RTK GPS Observation  
Northing= 155887.30  
Easting= 375416.93  
Note: NAD 1983, HARN 1996 Adjustment  
coordinates are NOT compatible with  
NAD 1983 coordinates  
Note: 1 Meter=3937/1200 U.S. Survey Feet

### SKETCH OF REFERENCE TIES FROM TIE SHEET 354



Statement of evidence relative to this corner location is on back of page.

I hereby certify that this document and the data contained herein was prepared by me or under my direct supervision.

Ernest J. Reed Signature 1-23-2006 Date

Registration No. Minn No 9808

- Land Surveyor,       Professional Engineer
- County Surveyor,     County Engineer

### OFFICE OF THE COUNTY RECORDER

County of \_\_\_\_\_

I hereby certify that this document was filed in the County Recorder's office at \_\_\_\_\_ M. on the \_\_\_\_\_ day of \_\_\_\_\_ A.D., 20\_\_\_\_

County Recorder \_\_\_\_\_

BY \_\_\_\_\_ Deputy

DOCUMENT NO. \_\_\_\_\_

STATEMENT OF EVIDENCE  
FROM TIE SHEET 352

FOUND SANDSTONE WHILE DIGGING FOR CORNER WITH BACKHOE. X ON SANDSTONE WAS BROKEN OFF WITH BACKHOE IN PROCESS AND SANDSTONE WAS REPLACED WITH MONUMENT.

SANDSTONE FIT ALL OCCUPATION LINES GOOD AND WAS CLOSE TO THE CENTERLINE OF ROADS NORTH AND SOUTH.

SANDSTONE WAS SET BY JOHN NELSON IN 1904.

IN AUGUST 2004, WE RAN A SURVEY AROUND SECTION 1, 11, 12, 13, AND 14 TO LOCATE EXISTING MONUMENTATION AND TIE IN LINES OF OCCUPATION. WE FOUND THE CAST IRON MONUMENT SET BY M.B. RUDE AND ESTABLISHED KANABEC COUNTY COORDINATES N THIS CORNER.