

3924025

# CERTIFICATE OF LOCATION OF GOVERNMENT CORNER

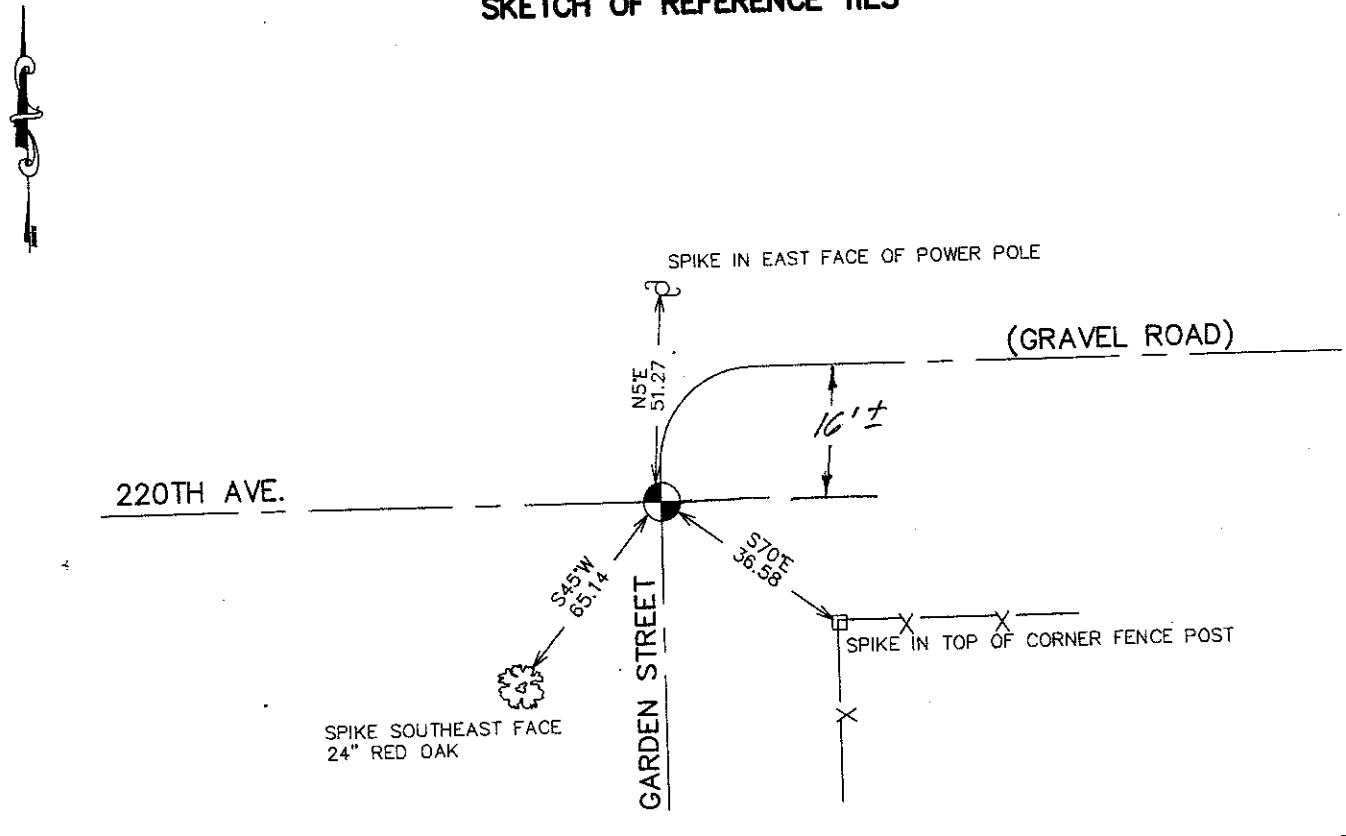
NORTHWEST Corner of Section 6, Township 39, Range 24, 4TH P.M.

STATE OF MINNESOTA, County of KANABEC

At the corner location shown on the sketch:  
SET #7 REBAR WITH ALUMINUM CAP  
AND ESTABLISHED KANABEC COUNTY COORDINATES ON ITS LOCATION.

Kanabec County U.S. Survey Feet Coordinates  
NAD 1983, HARN 1996 Adjustment  
Obtained by RTK GPS Observation  
Northing= 163721.20  
Easting= 375442.80  
Note: NAD 1983, HARN 1996 Adjustment  
coordinates are NOT compatible with  
NAD 1983 coordinates  
Note: 1 Meter=3937/1200 U.S. Survey Feet

## SKETCH OF REFERENCE TIES



Statement of evidence relative to this corner location is on back of page.

I hereby certify that this document and the data contained herein was prepared by me or under my direct supervision.

Ernest J. Rud 11-15-2007  
Signature Date

Registration No. 9808

- Land Surveyor,  Professional Engineer
- County Surveyor,  County Engineer

### OFFICE OF THE COUNTY RECORDER

County of \_\_\_\_\_  
I hereby certify that this document was filed in the County Recorder's office at \_\_\_\_\_ M. on the \_\_\_\_\_ day of \_\_\_\_\_ A.D., 20\_\_\_\_  
County Recorder \_\_\_\_\_  
BY \_\_\_\_\_ Deputy

DOCUMENT NO. \_\_\_\_\_

NORTHWEST CORNER SECTION 6, T39, R24

**STATEMENT OF EVIDENCE**

THE ORIGINAL CORNER WAS SET BY DEPUTY SURVEYOR SILAS BARNARD ON SEPTEMBER 4, 1849 AND 4 BEARING TREES ESTABLISHED. NO VISIBLE EVIDENCE REMAINS TO THE CORNER OR BEARING TREES.

IN BOOK A1, PAGES 64-66 A SURVEY BY JOHN NELSON DATED SEPTEMBER 12TH 1910 IS FILED FOR A ROAD SURVEY ALONG THE NORTH LINE OF SECTION 1 AND 2. JOHN STARTED AT THE TOWNSHIP CORNER AND WENT WEST HOWEVER HE DOESN'T STATE WHAT WAS IN PLACE.

ON MARCH 28TH 1911 JOHN NELSON DID A SURVEY IN SECTION 31, T40, R24 AND AGAIN USED THIS CORNER AND SET SEVERAL STONES IN SECTION 31. HOWEVER HE DOESN'T STATE WHAT WAS IN PLACE AT THE TOWNSHIP CORNER.

ON OCTOBER 22, 2007 E.G. RUD AND SONS MEASURED 2 MILES IN ALL DIRECTIONS TO LOCATE EXISTING MONUMENTS, LINES OF OCCUPATION AND DETERMINE A SEARCH AREA. THIS CORNER FALLS AT THE INTERSECTION OF AN EAST-WEST ROAD, A ROAD GOING SOUTH AND FENCE LINE RUNNING NORTH. THE ROAD RUNNING EAST IS 16 FEET NORTH OF THE ROAD SUNNING WEST.

ON OCTOBER 31, 2007 AN EXCAVATION WAS MADE AT THE LOCATION WITH THE COUNTY BACKHOE. WE FOUND 2 BOULDERS AT THIS LOCATION BUT NEITHER ONE HAD AN X ON THEM. IT APPEARED THAT THE TOPSOIL HAD BEEN REMOVED TO BUILD THE ROAD AND THEREFORE ANY EVIDENCE WAS DESTROYED. WE SET THIS CORNER AT THE EXTENSION OF THE FENCE LINE AND ON THE CENTERLINE OF THE WESTERLY ROAD. THIS FIT JOHN NELSONS MEASUREMENT ALONG THE NORTH LINE OF SECTION 1 WITHIN 9 FEET AND JOHNS MEASUREMENT ALONG THE SOUTH LINE OF SECTION 31 WITHIN 9 FEET. A #7 REBAR WITH AN ALUMINUM CAP WAS SET, TIES TAKEN AND KANABEC COUNTY COORDINATES ESTABLISHED ON THIS POSITION.

A #7 REBAR WITH AN ALUMINUM CAP WAS SET AND KANABEC COUNTY COORDINATES ESTABLISHED ON THIS LOCATION.