

CERTIFICATE OF LOCATION OF GOVERNMENT CORNER

NORTH QUARTER Corner of Section 06, Township 39, Range 24, 4TH P.M.

STATE OF MINNESOTA, County of KANABEC

At the corner location shown on the sketch:
ON 11/1/2010 SET A 1/2" IRON PIPE WITH CAP MARKED RLS 9808.

Kanabec County U.S. Survey Feet Coordinates
NAD 1983, HARN 1996 Adjustment
Obtained by RTK GPS Observation

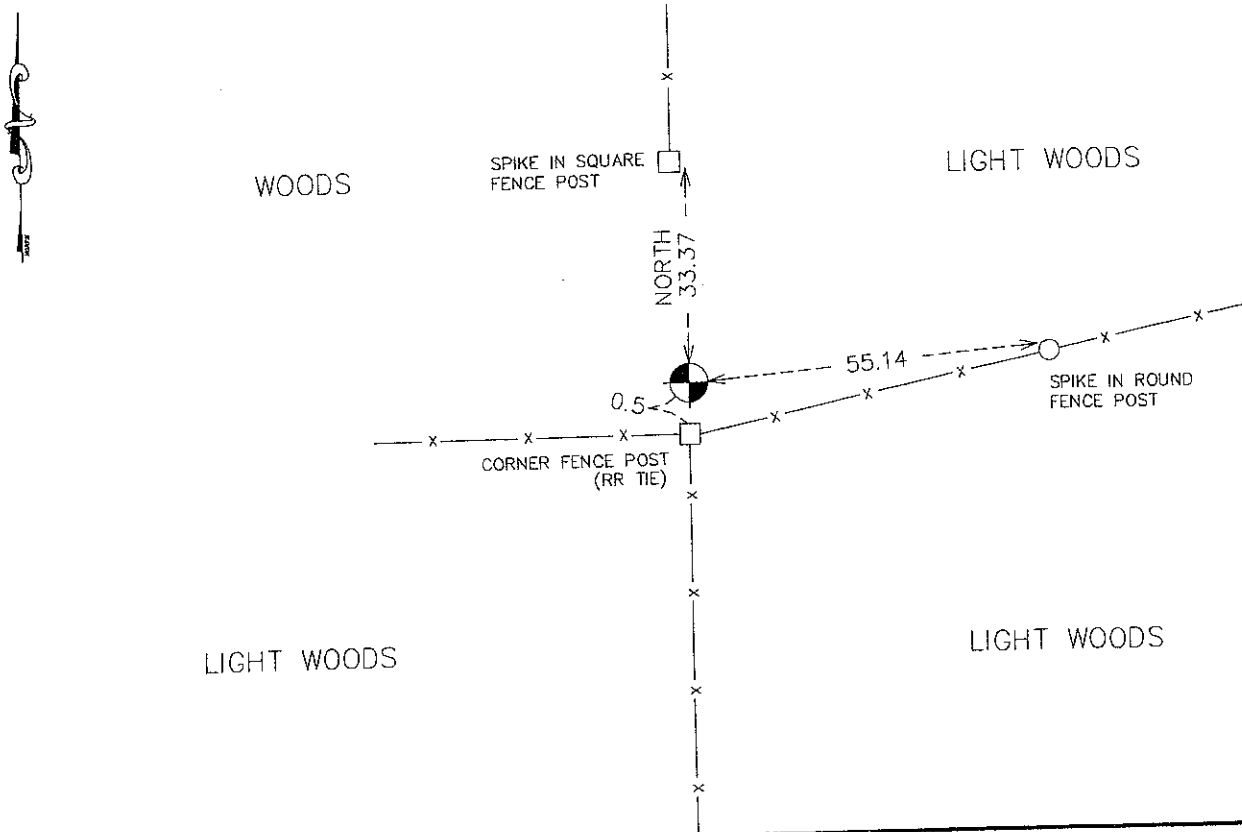
Northing= 169793.30

Easting= 377893.31

Note: NAD 1983, HARN 1996 Adjustment
coordinates are NOT compatible with
NAD 1983 coordinates

Note: 1 Meter=3937/1200 U.S. Survey Feet

SKETCH OF REFERENCE TIES



Statement of evidence relative to this corner location is on back of page.

I hereby certify that this document and the data contained herein was prepared by me or under my direct supervision.

Ernst J. Rud
Signature

12-23-10
Date

Registration No. *Er 9808*

- Land Surveyor, Professional Engineer
- County Surveyor, County Engineer

OFFICE OF THE COUNTY RECORDER

County of _____

I hereby certify that this document was filed in the County Recorder's office at _____ M. on the _____ day of _____ A.D., 20____

_____ day of _____ A.D., 20____

County Recorder _____

BY _____ Deputy

DOCUMENT NO. _____

N1/4 CORNER, SEC. 6, T39, R24

STATEMENT OF EVIDENCE

THE ORIGINAL CORNER WAS SET BY DEPUTY SURVEYOR SILAS BARNARD ON SEPT. 22, 1849 AND 2 BEARING TREES NOTED AS:

11" SUGAR MAPLE @ 20 LINKS BEARING N49°W

10" LINDEN MAPLE @ 14 LINKS BEARING S5°W

NO VISIBLE EVIDENCE REMAINS TODAY FOR THE CORNER OR THE BEARING TREES.

ON MAY 26, 1904 JOHN NELSON DID A SURVEY IN SEC. 31, T.40, R.24 AND SET A SANDSTONE MARKED WITH AN "X" AND TOOK 1 THE TO A 20" PINE STUMP @ 60 LINKS BEARING N85°W.

NO ROAD OPENINGS WERE ON FILE AT THE COUNTY AUDITOR'S OFFICE.

IN THE 1970'S A KANABEC COUNTY SURVEY CREW (OTTESON & HESSENIUS) DUG WITH A SHOVEL AND FOUND SEVERAL STONES, BUT NONE WITH A "X" ON THEM.

IN NOV. 2010, E.G. RUD AND SONS, INC. RAN A SURVEY ALONG THIS LINE TO LOCATE MONUMENTATION AND LINES OF OCCUPATION. THIS CORNER FALLS AT THE INTERSECTION OF FOUR FENCES RUNNING NORTH, SOUTH, EAST AND WEST WITH A RAILROAD TIE USED AT THE CORNER POST. WE HAND EXCAVATED IN THIS AREA WITH THE SAME RESULTS AS THE COUNTY CREW. THEREFORE WE SET A MONUMENT 0.5 FEET NORTH OF THE CORNER FENCE POST. THIS LOCATION FITS WITHIN 0.5 FEET EAST-WEST AND 34 FEET NORTH OF A LINE AND SPLIT. AN AREA 34 FEET SOUTH WAS ALSO INVESTIGATED, BUT NO EVIDENCE WAS FOUND. TIES WERE TAKEN AND KANABEC COUNTY COORDINATES WERE ESTABLISHED ON THIS POSITION.