

CERTIFICATE OF LOCATION OF GOVERNMENT CORNER

NORTHEAST Corner of Section 6, Township 39, Range 24, 4TH P.M.
 STATE OF MINNESOTA, County of KANABEC

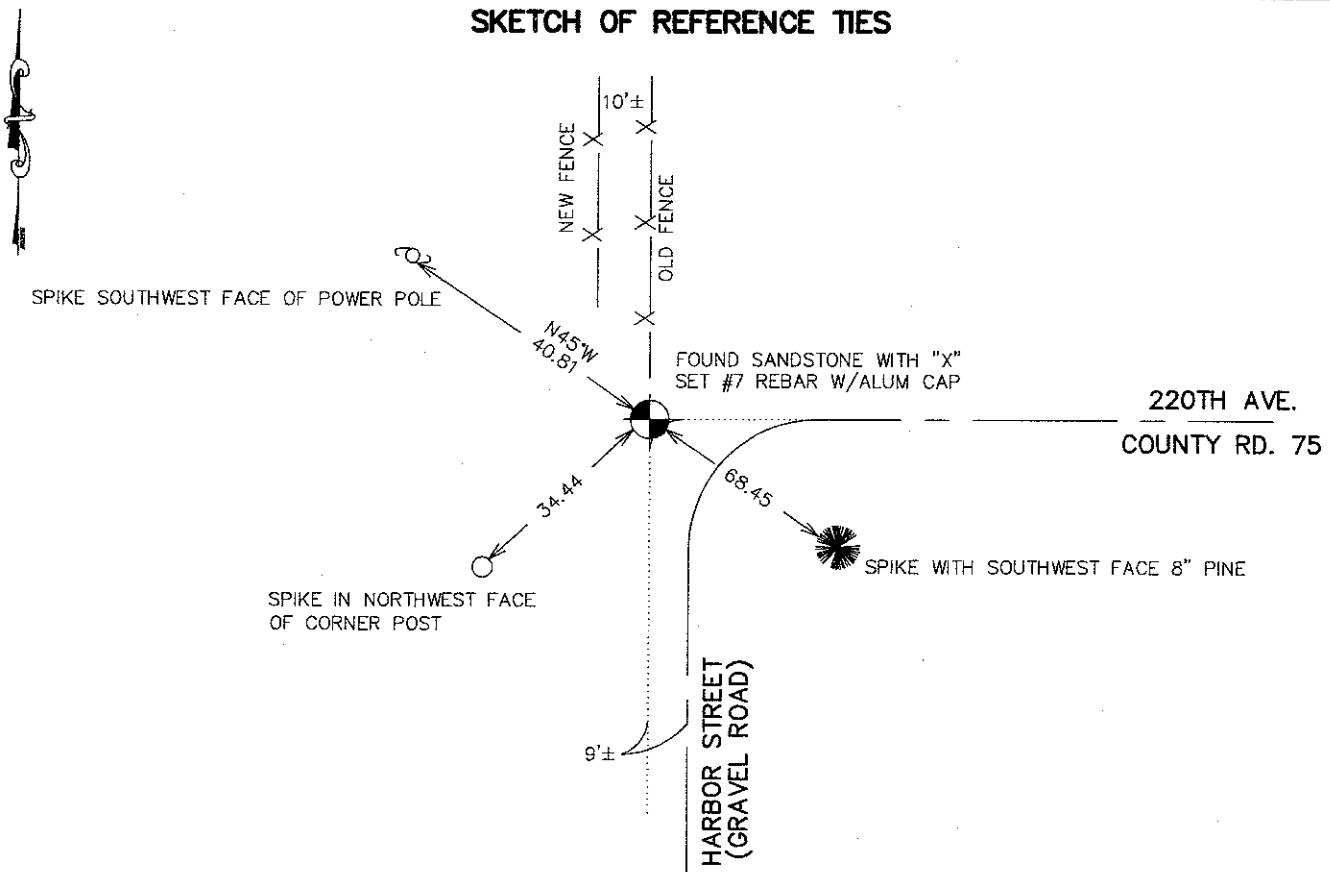
At the corner location shown on the sketch:
 SET #7 REBAR WITH ALUMINUM CAP

Kanabec County U.S. Survey Feet Coordinates
 NAD 1983, HARN 1996 Adjustment
 Obtained by RTK GPS Observation

Northing= 163798.68
 Easting= 380498.81

Note: NAD 1983, HARN 1996 Adjustment
 coordinates are NOT compatible with
 NAD 1983 coordinates
 Note: 1 Meter=3937/1200 U.S. Survey Feet

SKETCH OF REFERENCE TIES



Statement of evidence relative to this corner location is on back of page.

I hereby certify that this document and the data contained herein was prepared by me or under my direct supervision.

Ernest J. Blund _____ 12-10-2007
 Signature Date

Registration No. 9808

Land Surveyor, Professional Engineer
 County Surveyor, County Engineer

OFFICE OF THE COUNTY RECORDER

County of _____

I hereby certify that this document was filed in the County Recorder's office at _____ M. on the _____ day of _____ A.D., 20____

County Recorder _____

BY _____ Deputy

DOCUMENT NO. _____

NORTHEAST CORNER SECTION 06, T39, R24

STATEMENT OF EVIDENCE

THE ORIGINAL CORNER WAS SET BY DEPUTY SURVEYOR SILAS BARNARD IN SEPTEMBER 1855 AND 2 BEARING TREES NOTED. NO VISIBLE EVIDENCE FOR THE CORNER OR BEARING TREES REMAIN TODAY.

ON MARCH 28TH 1911 JOHN NELSON SURVEYED SECTION 31 TOWNSHIP 40 RANGE 24 AND IS RECORDED IN BOOK A PAGES 82-84. JOHN SHOWS AN X AT THIS CORNER AND NOTED TIES ON THE SURVEY. JOHN HANDSCHU MADE A SURVEY OF THE NORTH 1/2 OF SECTION 5 WHICH IS UNDATED AND IS RECORDED ON PAGES 56 AND 57 IN BOOK A1 OF SURVEYS. HE NOTED A ROCK WITH X IN HIS NOTES.

ON OCTOBER 22, 2007 E.G. RUD AND SONS RAN A SURVEY 2 MILES IN EACH DIRECTION OF THIS CORNER TO LOCATE EXISTING MONUMENTS AND LINES OF OCCUPATION. THIS CORNER FALLS AT THE INTERSECTION OF A ROAD RUNNING EAST AND A ROAD GOING SOUTH. THERE IS AN OLD FENCE LINE GOING NORTH.

ON OCTOBER 31, 2007 AN EXCAVATION WAS MADE WITH THE COUNTY BACKHOE. AT THE SOUTHERLY EXTENSION OF THE OLD FENCE AND THE CENTERLINE OF THE EAST ROAD A SANDSTONE WITH A CHISELED X WAS FOUND 1 FOOT BELOW THE SURFACE. THIS FELL ABOUT 9 FEET WEST OF THE ROAD CENTERLINE GOING SOUTH. THE STONE WAS LOWERED AND A HALF INCH IRON PIPE WITH AN ALUMINUM CAP WAS SET. TIES TAKEN AND KANABEC COUNTY COORDINATES ESTABLISHED ON THIS POSITION.