

# CERTIFICATE OF LOCATION OF GOVERNMENT CORNER

NORTH QUARTER Corner of Section 05, Township 39, Range 24, 4TH P.M.

STATE OF MINNESOTA, County of KANABEC

At the corner location shown on the sketch:

SET #7 REBAR WITH ALUMINUM CAP  
AND ESTABLISHED KANABEC COUNTY COORDINATES ON ITS LOCATION.

Kanabec County U.S. Survey Feet Coordinates  
NAD 1983, HARN 1996 Adjustment  
Obtained by RTK GPS Observation

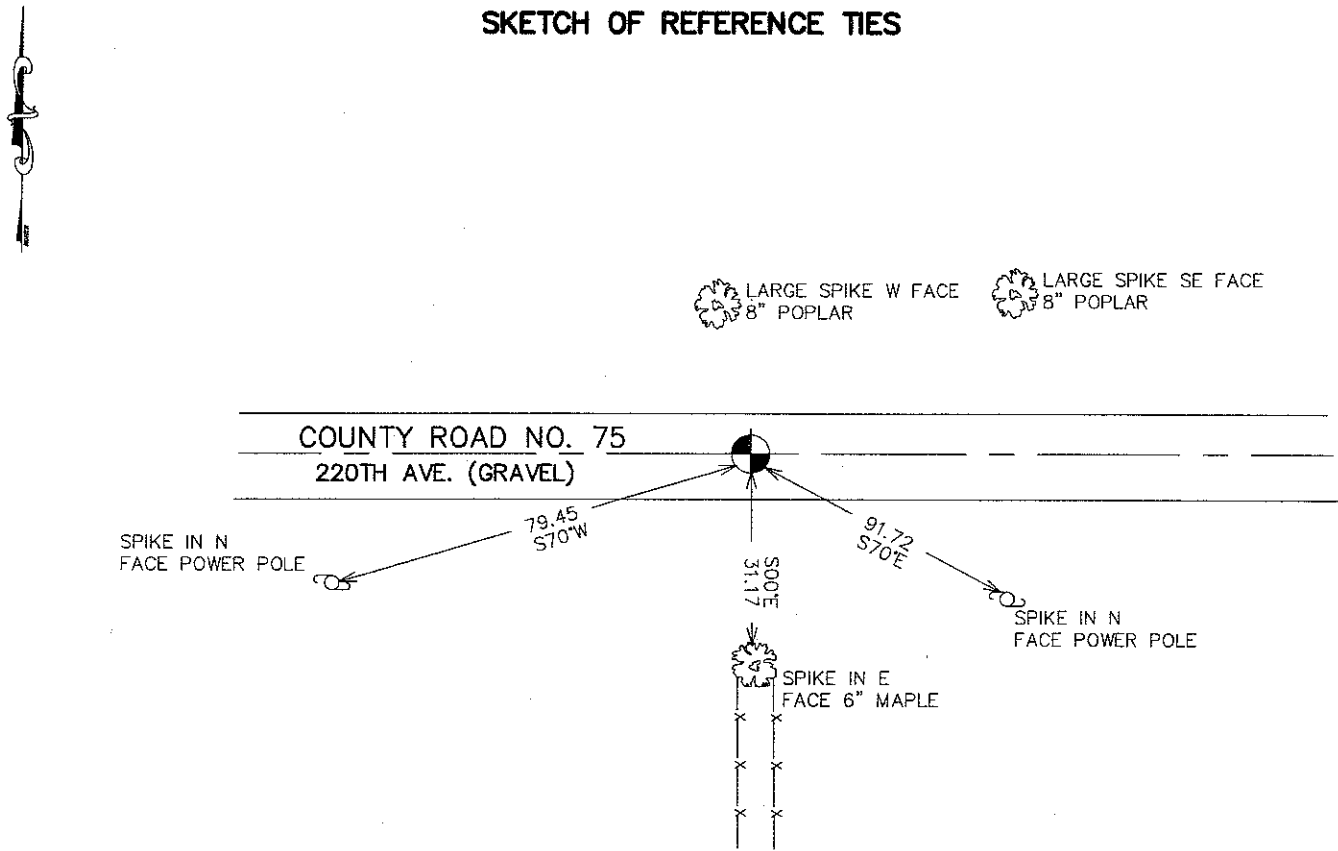
Northing= 163813.63

Easting= 383121.48

Note: NAD 1983, HARN 1996 Adjustment  
coordinates are NOT compatible with  
NAD 1983 coordinates

Note: 1 Meter=3937/1200 U.S. Survey Feet

## SKETCH OF REFERENCE TIES



Statement of evidence relative to this corner location is on back of page.

I hereby certify that this document and the data contained herein was prepared by me or under my direct supervision.

\_\_\_\_\_  
Signature Date

Registration No. \_\_\_\_\_

- Land Surveyor,       Professional Engineer  
 County Surveyor,     County Engineer

### OFFICE OF THE COUNTY RECORDER

County of \_\_\_\_\_

I hereby certify that this document was filed in the County Recorder's office at \_\_\_\_\_ M. on the

\_\_\_\_\_ day of \_\_\_\_\_ A.D., 20\_\_

County Recorder \_\_\_\_\_

BY \_\_\_\_\_ Deputy

DOCUMENT NO. \_\_\_\_\_

NORTH QUARTER CORNER SECTION 5, T39, R24

**STATEMENT OF EVIDENCE**

THE ORIGINAL CORNER POST WAS SET BY DEPUTY SURVEYOR SILAS BARNARD ON SEPTEMBER 22, 1849 AND BEARING TREES ESTABLISHED. NO VISIBLE EVIDENCE REMAINS TO THE CORNER OR BEARING TREES.

A SUBSEQUENT SURVEY DONE BY HANDSCHU IS RECORDED IN BOOK A1 OF SURVEYS, PAGE 56 AND 57 AND THE DATE IS NOT GIVEN IN THE NOTES HANDSCHU STATED THE NORTH QUARTER CORNER POST WAS IN AND DISTANCES MEASURED TO THE NORTHEAST CORNER OF SECTION 4. IN MAY 2006 E.G. RUD AND SONS DID A SURVEY IN SECTION 33 TOWNSHIP 40 RANGE 24 AND LOCATED EXISTING MONUMENTATION AND LINES OF OCCUPATION. THIS CORNER FALLS ON THE CENTERLINE OF AN EAST-WEST GRAVEL ROAD AND AN OLD FENCE LINE RUNNING SOUTH.

ON JULY 17, 2007 AN EXCAVATION WAS MADE USING THE COUNTY BACKHOE. SEVERAL STONES AND BOULDERS WERE REMOVED. THESE HAD TO HAVE BEEN USED TO BRIDGE THE PEAT SWAMP UNDERLYING THIS ROAD SURFACE. AT THE ELEVATION OF THE PEAT A SHARPENED POST WAS FOUND. THIS POSITION FITS THE FENCE TO THE SOUTH, THE CENTERLINE OF THE ROAD AND WAS WITHIN 3 FEET OF HANDSCHU'S MEASUREMENT FROM THE NORTHEAST CORNER OF SECTION 4. A #7 REBAR WITH AN ALUMINUM CAP WAS SET, TIES TAKEN AND KANABEC COUNTY COORDINATES ESTABLISHED USING G.P.S. EQUIPMENT.