

# CERTIFICATE OF LOCATION OF GOVERNMENT CORNER

NORTHWEST Corner of Section 3, Township 39, Range 24, 4TH P.M.  
STATE OF MINNESOTA, County of KANABEC

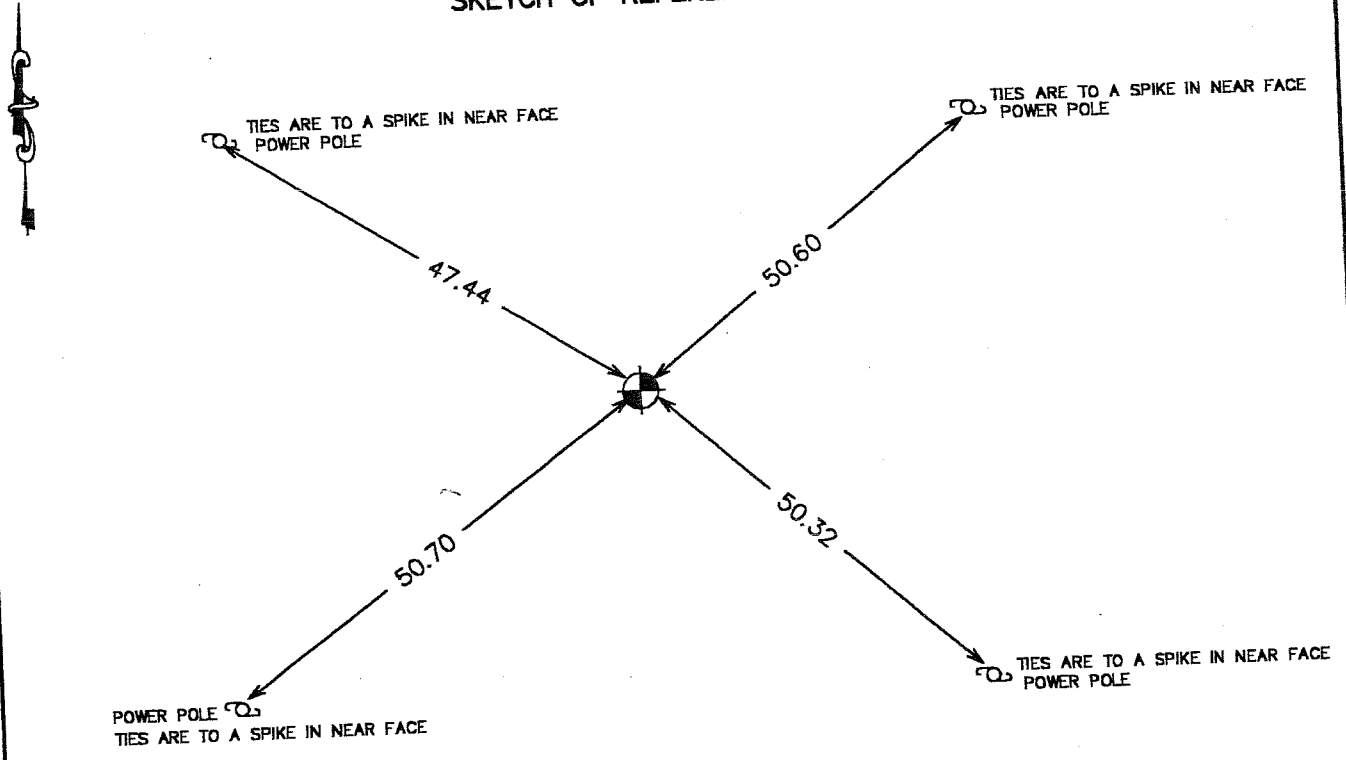
At the corner location shown on the sketch:  
On 09/05/2002 Found a KANABEC COUNTY CAST ALUMINUM  
MONUMENT with Magnets over the X on said Sandstone.  
Said monument was as found.

Kanabec County U.S. Survey Feet Coordinates  
NAD 1983, HARN 1996 Adjustment  
Obtained by RTK GPS Observation

Northing= 163843.21350  
Easting= 391018.40007

Note: NAD 1983, HARN 1996 Adjustment  
coordinates are NOT compatible with  
NAD 1983 coordinates  
Note: 1 Meter=3937/1200 U.S. Survey Feet

## SKETCH OF REFERENCE TIES



Statement of evidence relative to this corner location is on back of page.

I hereby certify that this document and the data contained herein was prepared by me or under my direct supervision.

Ernest L. Reed 12-23-2002  
Signature Date

Registration No. 9808

Land Surveyor,  Professional Engineer

County Surveyor,  County Engineer

## OFFICE OF THE COUNTY RECORDER

County of \_\_\_\_\_

I hereby certify that this document was filed in the County Recorder's office at \_\_\_\_\_ M. on the

\_\_\_\_\_ day of \_\_\_\_\_ A.D., 20\_\_

County Recorder \_\_\_\_\_

BY \_\_\_\_\_ Deputy

DOCUMENT NO. \_\_\_\_\_

STATEMENT OF EVIDENCE

SEE TIE SHEET NO. 353