

# CERTIFICATE OF LOCATION OF GOVERNMENT CORNER

NORTHEAST Corner of Section 1, Township 39, Range 24, 4TH P.M.  
 STATE OF MINNESOTA, County of KANABEC

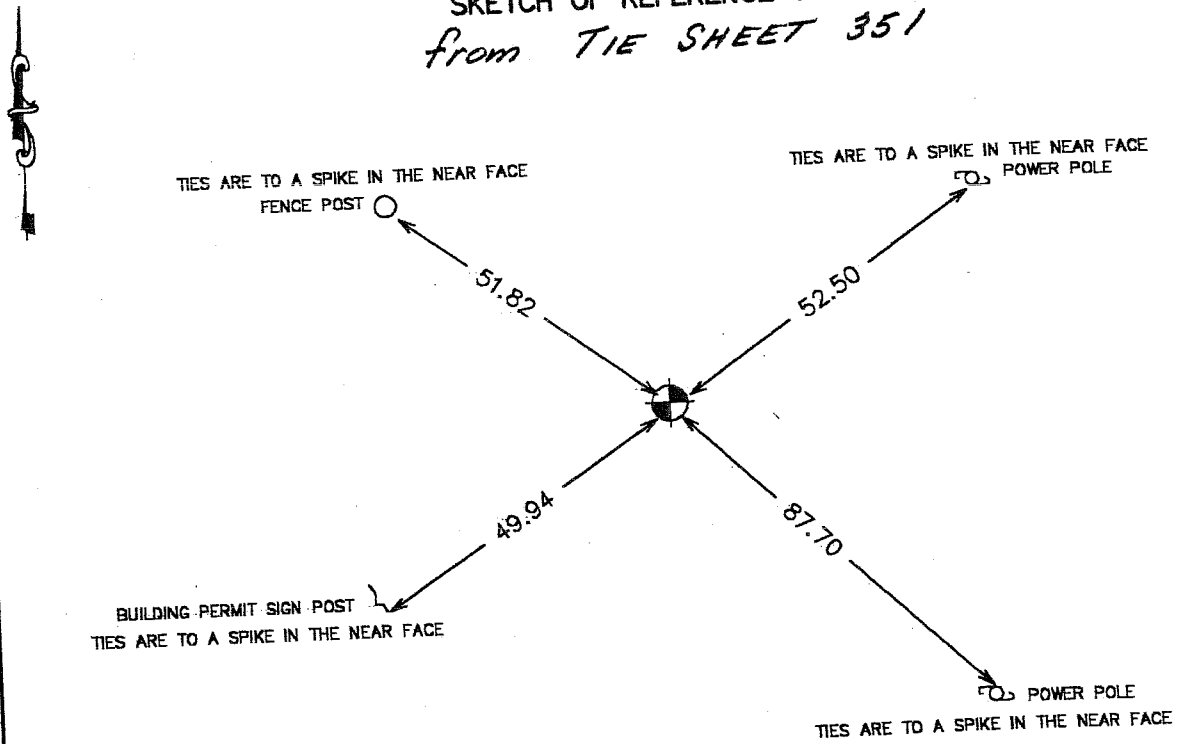
At the corner location shown on the sketch:  
 On 10/23/2002 Found a KANBEC COUNTY CAST ALUMINUM  
 MONUMENT with Magnets over the "x" on sandstone.

Kanabec County U.S. Survey Feet Coordinates  
 NAD 1983, HARN 1996 Adjustment  
 Obtained by RTK GPS Observation

Northing= 163834.318  
 Easting= 406802.861

Note: NAD 1983, HARN 1996 Adjustment  
 coordinates are NOT compatible with  
 NAD 1983 coordinates  
 Note: 1 Meter=3937/1200 U.S. Survey Feet

## SKETCH OF REFERENCE TIES from TIE SHEET 351



Statement of evidence relative to this corner location is on back of page.

I hereby certify that this document and the data  
 contained herein was prepared by me or under  
 my direct supervision.

Ernest G. Rud 1-21-2003  
 Signature Date

Registration No. 9808

Land Surveyor,  Professional Engineer  
 County Surveyor,  County Engineer

### OFFICE OF THE COUNTY RECORDER

County of \_\_\_\_\_  
 I hereby certify that this document was filed in  
 the County Recorder's office at \_\_\_\_\_ M. on the  
 \_\_\_\_\_ day of \_\_\_\_\_ A.D., 20\_\_\_\_

County Recorder \_\_\_\_\_  
 BY \_\_\_\_\_ Deputy

DOCUMENT NO. \_\_\_\_\_

STATEMENT OF EVIDENCE

SEE TIE SHEET NO. 351