

CERTIFICATE OF LOCATION OF GOVERNMENT CORNER

NORTH QUARTER Corner of Section 30, Township 40, Range 25, 4TH P.M.
 STATE OF MINNESOTA, County of KANABEC

At the corner location shown on the sketch:
 FEB. 2010: SET KANABEC COUNTY MONUMENT

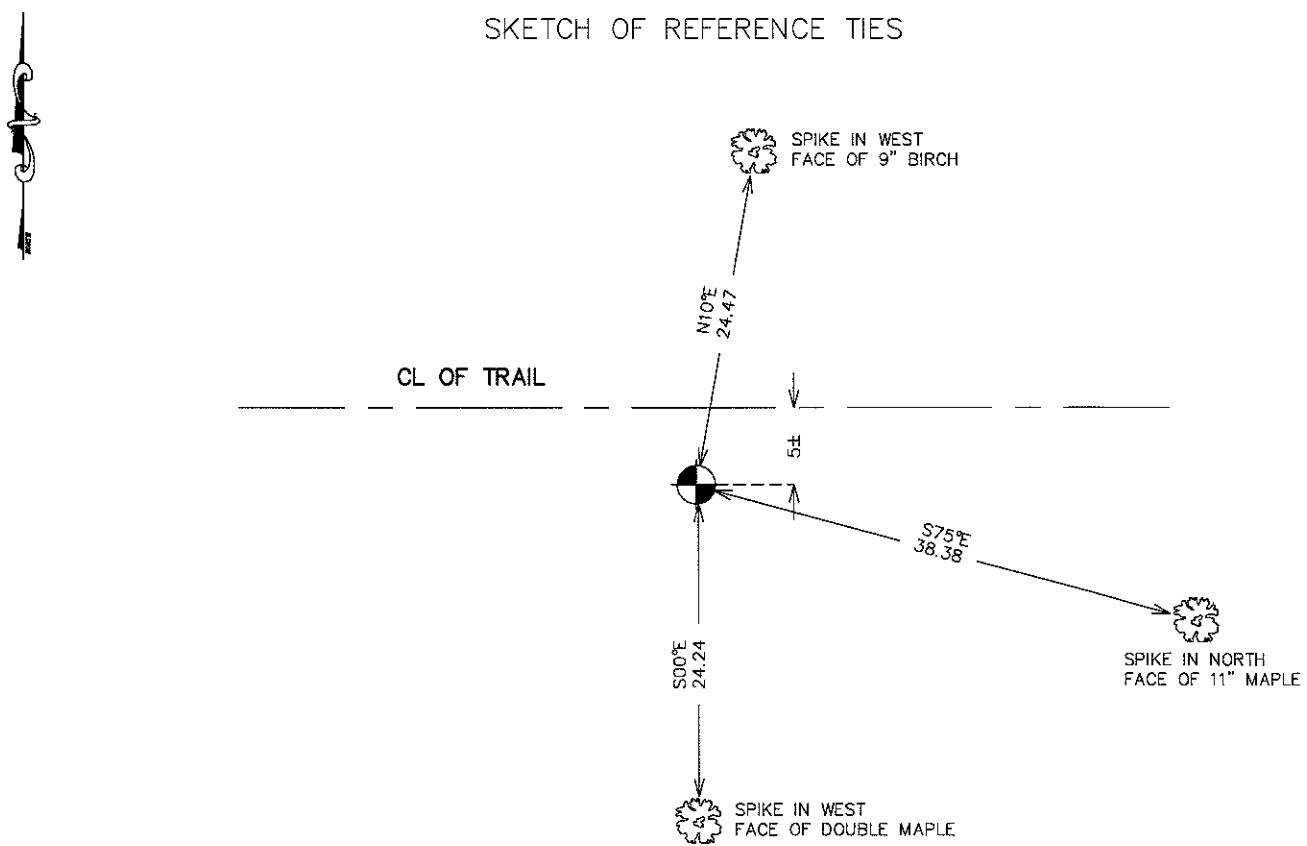
Kanabec County U.S. Survey Feet Coordinates
 NAD 1983, HARN 1996 Adjustment
 Obtained by RTK GPS Observation

Northing= 175886.64
 Easting= 345485.77

Note: NAD 1983, HARN 1996 Adjustment
 coordinates are NOT compatible with
 NAD 1983 coordinates

Note: 1 Meter=3937/1200 U.S. Survey Feet

SKETCH OF REFERENCE TIES



Statement of evidence relative to this corner location is on back of page.

I hereby certify that this document and the data contained herein was prepared by me or under my direct supervision.

Ernest Hud
 Signature

9-26-2010
 Date

Registration No. 9808

Land Surveyor, Professional Engineer

County Surveyor, County Engineer

OFFICE OF THE COUNTY RECORDER

County of _____

I hereby certify that this document was filed in the County Recorder's office at _____ M. on the _____ day of _____ A.D., 20____

County Recorder _____

BY _____ Deputy

DOCUMENT NO. _____

N 1/4 CORNER, SEC. 30, T40, R25

STATEMENT OF EVIDENCE

THE ORIGINAL GOVERNMENT CORNER WAS SET BY DEPUTY SURVEYOR SILAS BARNARD ON NOVEMBER 10, 1855 AND 2 BEARING TREES WERE NOTED.

NO VISIBLE EVIDENCE REMAINS FOR THE CORNER OR BEARING TREES.

IN FEBRUARY 2010, E.G. RUD AND SONS RAN A SURVEY ALONG THE NORTH LINE OF SECS. 29 AND 30.

THIS CORNER FALLS IN A MINIMUM MAINTENANCE TRAIL WITH NO OCCUPATION LINES RUNNING NORTH OR SOUTH. KEN MUNSON AND PAUL HOPPE, THE TWO LAND OWNERS IN SEC. 30 DIDN'T HAVE ANY RECOLLECTION OF A CORNER.

THEREFORE WE DETERMINED THIS CORNER TO BE LOST AND SET IT BY LOST METHODS. A KANABEC COUNTY MONUMENT WAS SET, TIES TAKEN AND KANABEC COUNTY COORDINATES WERE ESTABLISHED ON THIS CORNER.