

CERTIFICATE OF LOCATION OF GOVERNMENT CORNER

NORTH QUARTER Corner of Section 29, Township 40, Range 25, 4TH P.M.

STATE OF MINNESOTA, County of KANABEC

At the corner location shown on the sketch:
FEB. 2010: SET A KANABEC COUNTY MONUMENT

Kanabec County U.S. Survey Feet Coordinates
NAD 1983, HARN 1996 Adjustment
Obtained by RTK GPS Observation

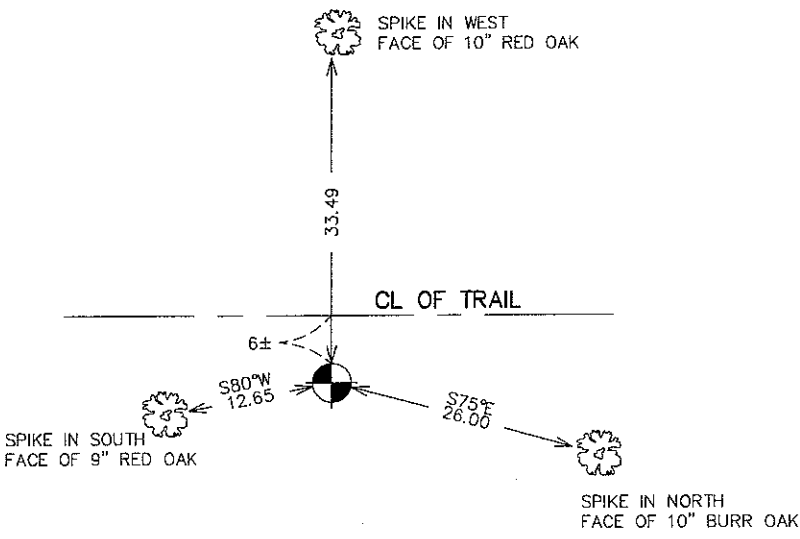
Northing= 175627.63

Easting= 350880.21

Note: NAD 1983, HARN 1996 Adjustment
coordinates are NOT compatible with
NAD 1983 coordinates

Note: 1 Meter=3937/1200 U.S. Survey Feet

SKETCH OF REFERENCE TIES



Statement of evidence relative to this corner location is on back of page.

I hereby certify that this document and the data contained herein was prepared by me or under my direct supervision.

Ernest J. Reed
Signature

2-02-2010
Date

Registration No. 9808

Land Surveyor, Professional Engineer

County Surveyor, County Engineer

OFFICE OF THE COUNTY RECORDER

County of _____

I hereby certify that this document was filed in the County Recorder's office at _____ M. on the _____ day of _____ A.D., 20 _____

County Recorder _____

BY _____ Deputy

DOCUMENT NO. _____

N 1/4 CORNER, SEC. 29, T40, R25

STATEMENT OF EVIDENCE

THE ORIGINAL GOVERNMENT POST WAS SET BY DEPUTY SURVEYOR SILAS BARNARD ON NOVEMBER 10, 1855 AND 2 BEARING TREES WERE NOTED:

9" YELLOW BIRCH, N15°W @ 16 LINKS

25" PINE, S47° E @ 5 LINKS

NO VISIBLE EVIDENCE REMAINS FOR THE ORIGINAL POST OR BEARING TREES.

NO RECORDS OF ANY SUBSEQUENT SURVEYS COULD BE FOUND AT THE KANABEC COUNTY OFFICES OR AT THE MN DNR OFFICES.

IN FEBRUARY 2010 E.G. RUD AND SONS RAN A SURVEY ALONG THE NORTH LINE OF SECS. 29 AND 30, THIS CORNER FALLS JUST SOUTH OF A TRAIL AND WITH NO LINES OF OCCUPATION THIS CORNER WAS SET AS A LOST CORNER EQUIDISTANT FROM THE NE AND NW CORNERS OF SEC. 29. A KANABEC COUNTY MONUMENT WAS SET, TIES TAKEN AND KANABEC COUNTY COORDINATES ESTABLISHED ON THIS POSITION.