

CERTIFICATE OF LOCATION OF GOVERNMENT CORNER

NORTH QUARTER Corner of Section 32, Township 40, Range 25, 4TH P.M.

STATE OF MINNESOTA, County of KANABEC

At the corner location shown on the sketch:
On 10/ /2003 Set a Kanabec County Monument.

Kanabec County U.S. Survey Feet Coordinates
NAD 1983, HARN 1996 Adjustment
Obtained by RTK GPS Observation

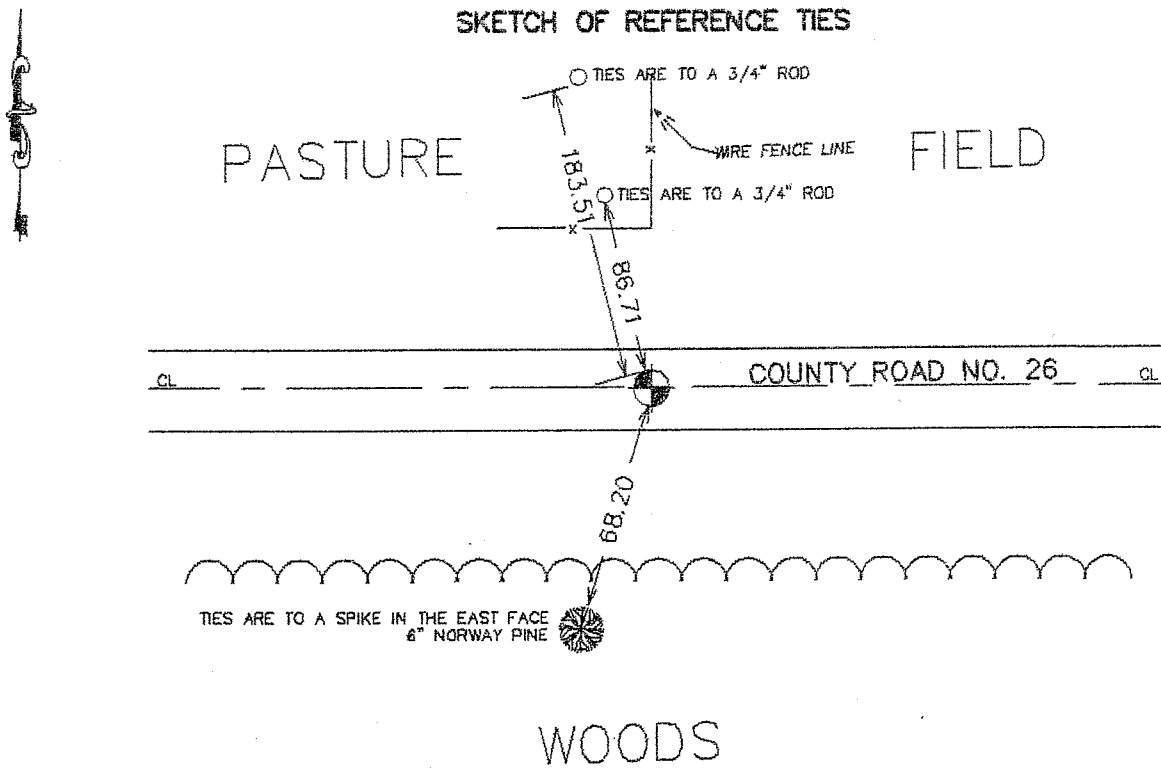
Northing= 170456.991

Easting= 350835.231

Note: NAD 1983, HARN 1996 Adjustment
coordinates are NOT compatible with
NAD 1983 coordinates

Note: 1 Meter=3937/1200 U.S. Survey Feet

SKETCH OF REFERENCE TIES



Statement of evidence relative to this corner location is on back of page.

I hereby certify that this document and the data contained herein was prepared by me or under my direct supervision.

Ernst J. Rud
Signature

1-31-2004
Date

Registration No. 9808

Land Surveyor, Professional Engineer

County Surveyor, County Engineer

OFFICE OF THE COUNTY RECORDER

County of _____

I hereby certify that this document was filed in the County Recorder's office at _____ M. on the

_____ day of _____ A.D., 20__

County Recorder _____

BY _____ Deputy

DOCUMENT NO. _____

STATEMENT OF EVIDENCE

(from tie sheet no. 872)

The North Quarter corner of Section 32 was originally set in 1855 by Silas Barnard, Deputy Surveyor. A post was placed and witness trees established. No remains of the post or witness trees were found.

I placed a cast iron monument at the established occupation lines. This position fit midway between the occupation lines at the Northeast and Northwest corners of Section 32 and was the best evidence found for placement of the subject corner.

At the request of the Kanabec County Surveyor we excavated at the subject corner in an area of 5 feet East, 10 feet West, 3 feet North, and 3 feet South of our corner position at a depth of 4 feet and found no evidence of a corner position. The cast iron monument was replaced July 21, 1993.

In October of 2003 at the request of the Kanabec County Highway Department we reset this corner from construction ties and established Kanabec County coordinates on this monument.