

# CERTIFICATE OF LOCATION OF GOVERNMENT CORNER

NORTHEAST Corner of Section 31, Township 40, Range 25, 4TH P.M.  
 STATE OF MINNESOTA, County of KANABEC

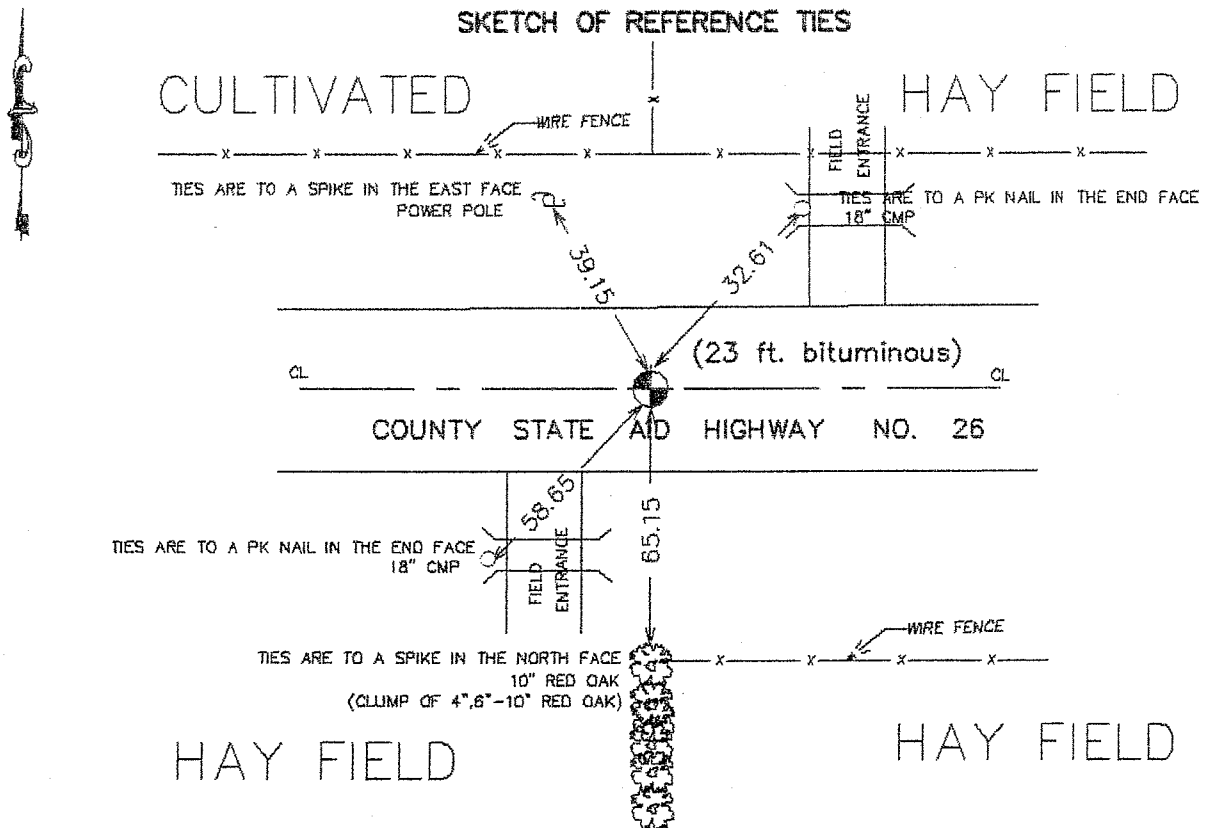
At the corner location shown on the sketch:  
 On 10/ /2003 Set a Kanabec County Monument.

Kanabec County U.S. Survey Feet Coordinates  
 NAD 1983, HARN 1996 Adjustment  
 Obtained by RTK GPS Observation

Northing= 170575.000  
 Easting= 348101.330

Note: NAD 1983, HARN 1996 Adjustment  
 coordinates are NOT compatible with  
 NAD 1983 coordinates  
 Note: 1 Meter=3937/1200 U.S. Survey Feet

### SKETCH OF REFERENCE TIES



Statement of evidence relative to this corner location is on back of page.

I hereby certify that this document and the data contained herein was prepared by me or under my direct supervision.

Ernest J. Rud  
 Signature

1-31-2004  
 Date

Registration No. 9808

- Land Surveyor,     Professional Engineer  
 County Surveyor,     County Engineer

### OFFICE OF THE COUNTY RECORDER

County of \_\_\_\_\_

I hereby certify that this document was filed in the County Recorder's office at \_\_\_\_\_ M. on the \_\_\_\_\_ day of \_\_\_\_\_ A.D., 20\_\_\_\_

County Recorder \_\_\_\_\_

BY \_\_\_\_\_ Deputy

DOCUMENT NO. \_\_\_\_\_

STATEMENT OF EVIDENCE  
(FROM TIE SHEET 874)

The Northeast corner of Section 31 was originally set in 1855 by Silas Barnard, Deputy Surveyor. A post was placed and witness trees established. No remains of the post or witness trees found.

In 1910, John Nelson, County Surveyor recorded finding a Government witness tree at this corner. Mr. Nelson performed a survey of the Southwest Quarter of Section 32. No perpetuation of this corner, by setting of a different monument, was noted by Nelson.

I placed a cast iron monument at the established occupation lines. This position fit well with the other established occupation lines along the North line of Section 32, Township 40, Range 25.

On October 30, 1991 at the request of the Kanabec County Surveyor we excavated at the subject corner in an area of 15 feet East, 5 feet West, 3 feet North, and 3 feet South of our corner position at a depth of 3.3 feet and found no evidence of a corner position. The cast iron monument was replaced July 21, 1993.

In October 2003 we reset this corner. All previous ties and construction ties were gone. We set the corner from a former GPS observation on this point and when we compared it to M.B. Rudes location we were within 0.04 feet North - South and 0.22 East - West.