

**OFFICE OF THE COUNTY RECORDER**

County of \_\_\_\_\_

I hereby certify that this document was filed in the County Recorder's office at \_\_\_\_\_ M. on the \_\_\_\_\_ day of \_\_\_\_\_ A.D., 20 \_\_\_\_\_

County Recorder \_\_\_\_\_

BY \_\_\_\_\_ Deputy

**DOCUMENT NO.** \_\_\_\_\_

4025102

Index No. \_\_\_\_\_ R-11

**CERTIFICATE OF LOCATION OF GOVERNMENT CORNER**

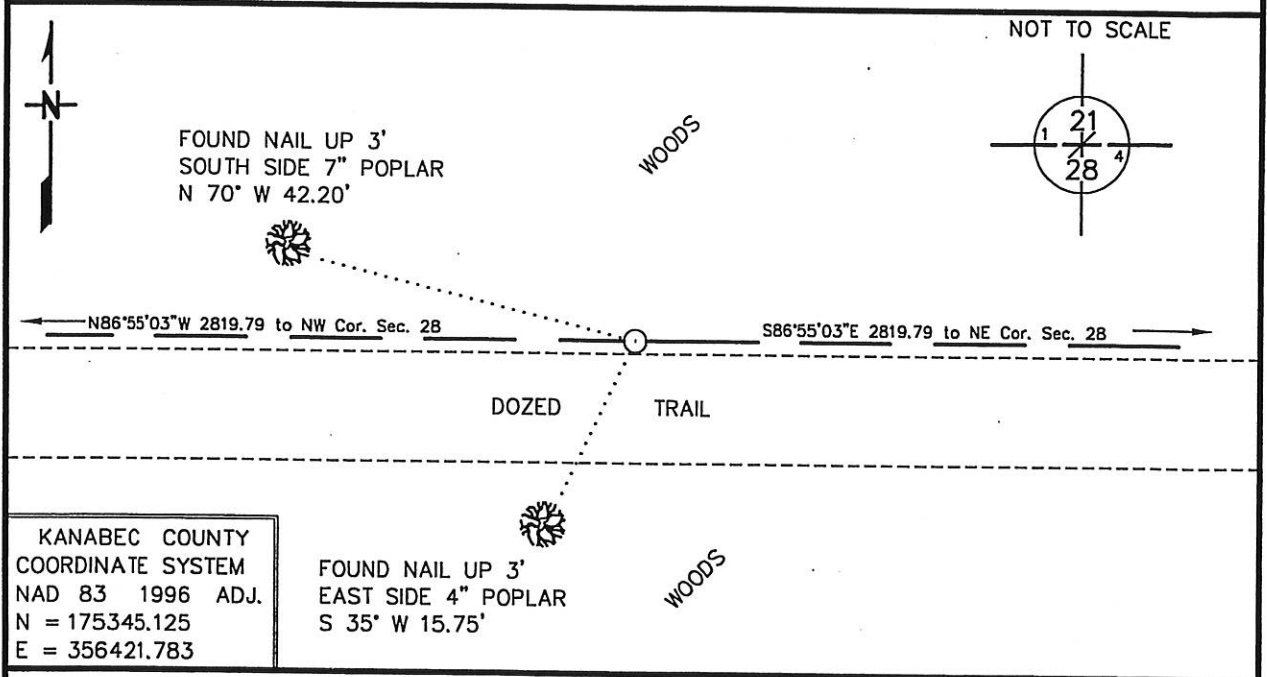
NORTH QUARTER Corner of Section 28, Township 40, Range 25  
4TH Principal Meridian, State of Minnesota, County of KANABEC

At the corner location shown on the sketch:

On \_\_\_\_\_ found a \_\_\_\_\_  
DATE

left monument as found,  lowered monument,  removed monument (explain)

On 2/10/2014 Placed a 3/4" X 24" REBAR WITH CAP "MN DNR. LS 47461"  
DATE



KANABEC COUNTY  
 COORDINATE SYSTEM  
 NAD 83 1996 ADJ.  
 N = 175345.125  
 E = 356421.783

Statement of evidence for this corner location is on back of this page. RAL JULY 2015  
WMA09004

I hereby certify that this plan, specification, or report was prepared by me or under my direct supervision and that I am a duly Licensed Land Surveyor under the laws of the State of Minnesota.

SIGNATURE Robert A. Langner DATE 10/1/15 License Number 47461

STATEMENT OF EVIDENCE

**North Quarter Corner of Section 28, Township 40 North, Range 25 West, 4<sup>th</sup> P.M.**

The Department of Natural Resources, Division of Lands and Minerals, contacted the following offices for information regarding this corner:

- Kanabec County Recorder
- Kanabec County Surveyor
- Kanabec County Highway Department
- Bogart Peterson and Associates
- Minnesota Historical Society
- Minnesota Department of Transportation

1855

The US General Land Office field notes, on file with the Historical Society, show this corner to be marked with a post and bearing trees.

1909

Numerous road surveys were performed by John Nelson. Notes indicate the government corners were found at the northeast and northwest corners of Section 28 where stones were placed. There is no mention of running the north line of Section 28 or of the quarter corner. *This information was found in Book A-1 in the Kanabec County Engineer's office.*

1925

Section Corner Record by Geo. H. Jenks, County Surveyor, indicates a stone marked with a "+" at the northeast corner of Section 28. *This information was found on page 106 of Book 1 at the Kanabec County Highway Department.*

1951

The Department of Natural Resources surveyed the south boundary of the Mille Lacs Wildlife Management Area and ran the north line of Section 28. The sandstone monuments at the northeast and northwest section corners were recovered. The north line of the section measured 5649.0 feet. Nothing was found or set at the quarter corner. *This information is on file with the Department of Natural Resources Survey Unit.*

2010

Kanabec County Surveyor, Ernest Rud, set county monuments at the northeast and northwest corners of Section 28.

2014

The DNR Survey Crew retraced the north line of Section 28. The survey crew located a sandstone monument at the northeast corner of Section 28 and accepted it as the corner. The county monument was located at the northwest corner of section 28. The distance between these two monuments was measured to be 5639.64 feet compared to the 1951 distance of 5649.0 feet. Using 1951 DNR measurements for a search location, a 4' x 10' x 3' deep hole was excavated with a DNR Wildlife staff operated backhoe at the northwest corner of Section 28. The center of the hole being 8 feet northwest of the found county monument and running in a northeast-southwest direction. The sandstone was not recovered and the county monument was accepted as the corner. The survey crew searched for the north quarter corner but no evidence of the original corner could be recovered. After analysis, the quarter corner location was computed midway and online between the county monument at the northwest corner and found sandstone monument at the northeast corner of the section. A 3/4" x 24" rebar with cap #47461 was set to mark the corner location.

For more information on our survey in this area, please contact the MN DNR, Division of Lands and Minerals, Survey Section, 1601 Minnesota Drive, Brainerd, MN 56401