

CERTIFICATE OF LOCATION OF GOVERNMENT CORNER

EAST QUARTER Corner of Section 29, Township 40, Range 25, 4TH P.M.

STATE OF MINNESOTA, County of KANABEC

At the corner location shown on the sketch:

KANABEC COUNTY MONUMENT

Kanabec County U.S. Survey Feet Coordinates
NAD 1983, HARN 1996 Adjustment
Obtained by RTK GPS Observation

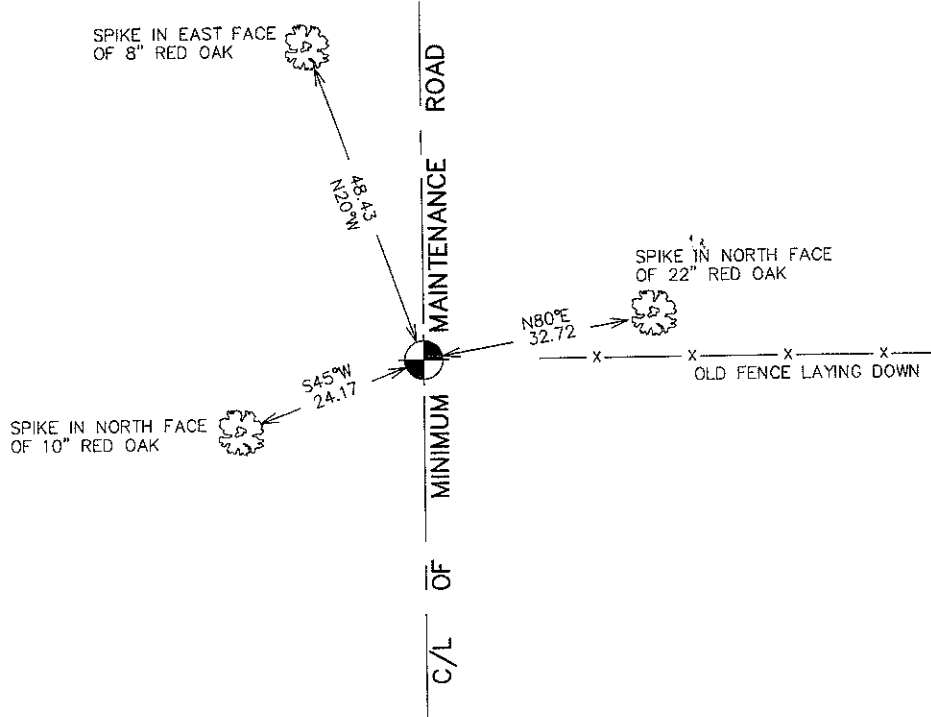
Northing= 172954.35

Easting= 353583.19

Note: NAD 1983, HARN 1996 Adjustment
coordinates are NOT compatible with
NAD 1983 coordinates

Note: 1 Meter=3937/1200 U.S. Survey Feet

SKETCH OF REFERENCE TIES FROM TIE SHEET 583



Statement of evidence relative to this corner location is on back of page.

I hereby certify that this document and the data contained herein was prepared by me or under my direct supervision.

Ernest Lund
Signature

2-~~20~~²-2010
Date

Registration No. 9808

Land Surveyor, Professional Engineer
 County Surveyor, County Engineer

OFFICE OF THE COUNTY RECORDER

County of _____

I hereby certify that this document was filed in the County Recorder's office at _____ M. on the _____ day of _____ A.D., 20____

County Recorder _____

BY _____ Deputy

DOCUMENT NO. _____

E 1/4 CORNER, SEC 29, T40, R25

STATEMENT OF EVIDENCE:

ORIGINAL CORNER SET IN NOVEMBER 1855 BY SILAS BARNARD. NO ORIGINAL CORNER OR BEARING TREES REMAIN.

IN 1907, VICKERY DID A ROAD SURVEY ALONG THE EAST LINE OF SEC. 29 AND MEASURED THIS LINE TO BE 5121.6 FEET. NO MENTION OF ANYTHING BEING SET AT THIS CORNER. MAP OF ROAD SURVEY SHOWS U.S. WITNESS AT NE, SE AND E 1/4 CORNERS. TODAY WE MEASURE 5129.3 FEET FROM SE CORNER TO NE CORNER.

IN 1910, JOHN NELSON DID A ROAD SURVEY FOR A ROAD OPENING ALONG THE NORTH AND EAST LINE OF SEC. 20. JOHN SET STONES AT THE NW AND NE CORNERS OF SEC. 20 AND NOTED GOVERNMENT WITNESS AT THE NE CORNER OF SEC. 29. JOHN MEASURED 77.44 CHAINS (5111.04 FT.) ALONG THE EAST LINE OF SEC. 20. TODAY WE MEASURED THIS LINE AT 5126.2 FT.

THIS CORNER FALLS AT THE CENTERLINE OF A GRAVEL ROAD RUNNING NORTH AND SOUTH AND A FENCE LINE RUNNING EAST. THIS FITS WITHIN 22 FEET OF BEING EQUIDISTANT FROM THE NE AND SE CORNERS OF SEC. 29.

THEREFORE WE ACCEPTED THE LINES AS OCCUPIED TO BE THE BEST EVIDENCE FOR THE LOCATION OF THIS CORNER. A KANABEC COUNTY MONUMENT WAS SET, TIES TAKEN AND KANABEC COUNTY COORDINATES WERE ESTABLISHED ON THIS POSITION.