

# CERTIFICATE OF LOCATION OF GOVERNMENT CORNER

NORTH QUARTER Corner of Section 33, Township 40, Range 25, 4TH P.M.  
 STATE OF MINNESOTA, County of KANABEC

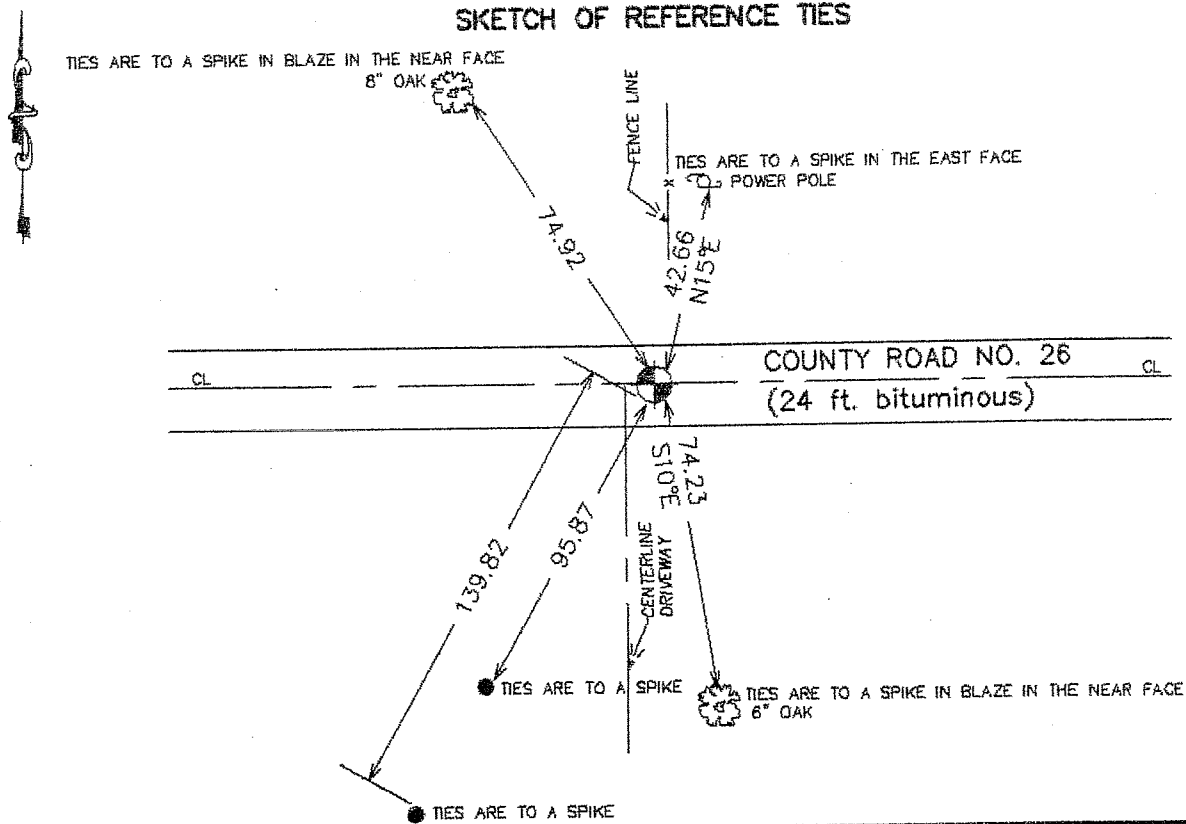
At the corner location shown on the sketch:  
 On 10/ /2003 Set a Kanabec County Monument.

Kanabec County U.S. Survey Feet Coordinates  
 NAD 1983, HARN 1996 Adjustment  
 Obtained by RTK GPS Observation

Northing= 170197.042  
 Easting= 356360.323

Note: NAD 1983, HARN 1996 Adjustment  
 coordinates are NOT compatible with  
 NAD 1983 coordinates  
 Note: 1 Meter=3937/1200 U.S. Survey Feet

### SKETCH OF REFERENCE TIES



Statement of evidence relative to this corner location is on back of page.

I hereby certify that this document and the data contained herein was prepared by me or under my direct supervision.

Ernest J. Blud  
 Signature

1-31-2004  
 Date

Registration No. 9808

Land Surveyor,     Professional Engineer  
 County Surveyor,     County Engineer

### OFFICE OF THE COUNTY RECORDER

County of \_\_\_\_\_  
 I hereby certify that this document was filed in the County Recorder's office at \_\_\_\_\_ M. on the \_\_\_\_\_ day of \_\_\_\_\_ A.D., 20\_\_\_\_

County Recorder \_\_\_\_\_  
 BY \_\_\_\_\_ Deputy

DOCUMENT NO. \_\_\_\_\_

## STATEMENT OF EVIDENCE

(from tie sheet no. 963)

All of the original bearing trees are now gone.

In 1905, J.B. Vickory made a survey along the north line of Sections 31-34, Township 40, Range 25, for a four rod road, per the Town Road Order on record at the County Auditor's Office.

In July of 1993, we made a survey along the north line of Sections 31-34, Township 40, Range 25, to locate existing monuments, lines of occupation and establish search areas.

On May 20 and 21, 1998, we made a 5 foot by 12 foot by 36 foot excavation with a backhoe. We found a railroad spike in the first layer of blacktop, which fits a downed fence line north. We found a spike down 2 feet, plus or minus, below the road surface and 25 feet east of the railroad spike. We found a 5 inch by 10 inch by 12 inch hardstone marked with a cross mark down 4 feet, plus or minus, and east of the railroad spike.

We accepted the found stone monument as the perpetuated corner location. It falls within 1 foot of a proportional measurement between the northeast and northwest corners of Section 33 and 13.6 feet south of a straight line.

In October of 2003 at the request of the Kanabec County Highway Department we reset this corner from construction ties and established Kanabec County coordinates on this monument.