

4025 094

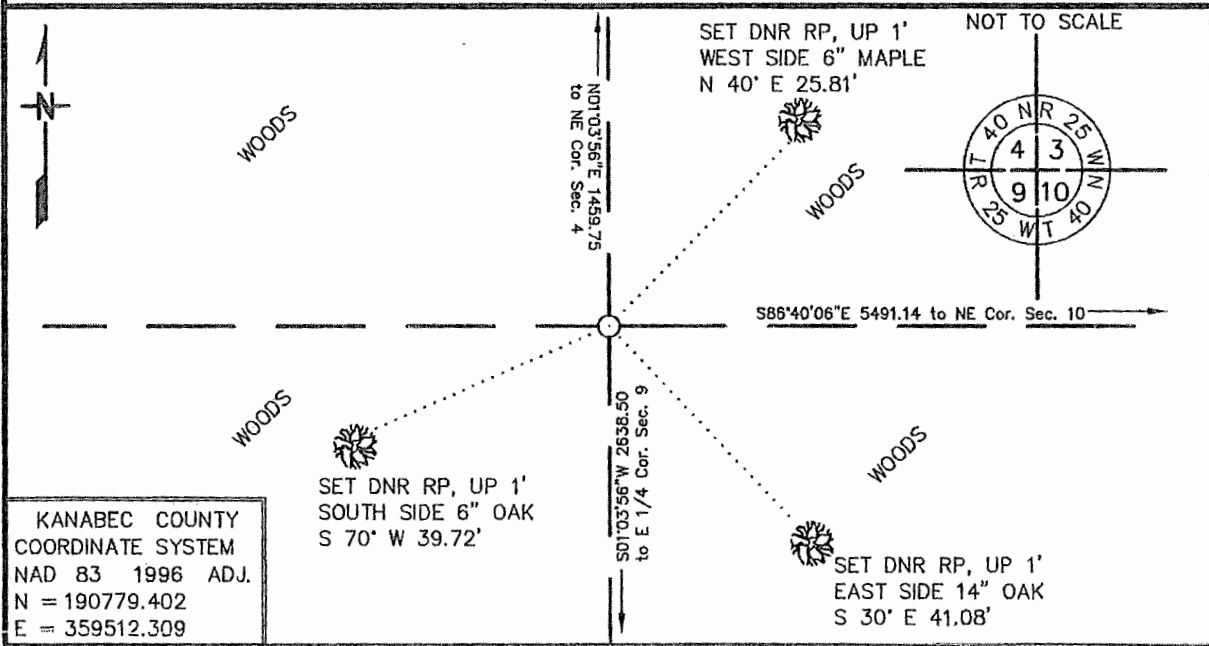
Index No. E-13

CERTIFICATE OF LOCATION OF GOVERNMENT CORNER

NORTHEAST Corner of Section 9, Township 40, Range 25
4TH Principal Meridian, State of Minnesota, County of KANABEC

At the corner location shown on the sketch:

- On _____ found a _____
DATE
- left monument as found, lowered monument, removed monument (explain)
- On 4/19/2017 Placed a 3/4" X 24" REBAR WITH CAP "MN DNR LS 47461"
DATE



KANABEC COUNTY
COORDINATE SYSTEM
NAD 83 1996 ADJ.
N = 190779.402
E = 359512.309

Statement of evidence for this corner location is on back of this page.

AMD JUNE 2017
WMA09004

I hereby certify that this plan, specification, or report was prepared by me or under my direct supervision and that I am a duly Licensed Land Surveyor under the laws of the State of Minnesota.

SIGNATURE Robert A. Longner DATE 4/21/17 License Number 47461

STATEMENT OF EVIDENCE**Northeast Corner of Section 9, Township 40 North, Range 25 West, 4th P.M.**

The Department of Natural Resources, Division of Lands and Minerals, contacted the following offices for information regarding this corner:

Kanabec County Recorder
 Kanabec County Surveyor
 Kanabec County Highway Department
 Rud & Sons Land Surveying
 Kroeschel Land Surveying
 Bogart Peterson and Associates
 Minnesota Historical Society
 Minnesota Department of Transportation

1855

The US General Land Office field notes, on file with the Historical Society, show this corner to be marked with a post and the following bearing trees:

Pine	12"	N 80 W	12 links
W. Birch	7"	N 78 E	45 links
W. Birch	8"	S 50 W	50 links
Y. Birch	8"	S 75 E	25 links

No other information about this corner was found.

2014

In February, the DNR Survey Crew retraced the east line of Sections 4, 9, 16 and 21, locating GLO calls along the lines and other evidence of the section lines. GLO placed this corner 1 chain south of a swamp running the entire length of the fractional east line of Section 4. The survey crew located the edges of a narrow north-south swamp which comes to a point in the vicinity of this corner. No other evidence of the corner remained.

2016

In April, a search position for this corner was computed on line between the northeast corner of Section 16 and the Northeast corner of Section 4 at a proportional distance to the GLO distance. The overall distance was measured at 6736.83, GLO measured 6740.58. The DNR Survey Crew made another search for the corner and accessories but found nothing. The computed position was found to be in harmony with the GLO swamp call 1 chain north. Because the swamp comes to a point here, it would be illogical to base the east-west position of the corner dependent upon government corners east and west. Moving the corner east or west any amount would make a significant change in the distance to the swamp edge. It would also cause portions of the section line running north to leave the swamp. According to the GLO notes, the entire length of this line runs in the swamp. After analysis, the computed position was accepted as the obliterated corner location. A ¾ inch by 24 inch rebar with cap "MN DNR LS 47461" was set to mark the corner location.

For more information on our survey in this area, please contact the MN DNR, Division of Lands and Minerals, Survey Section, 1601 Minnesota Drive, Brainerd, MN 56401