

4025 093

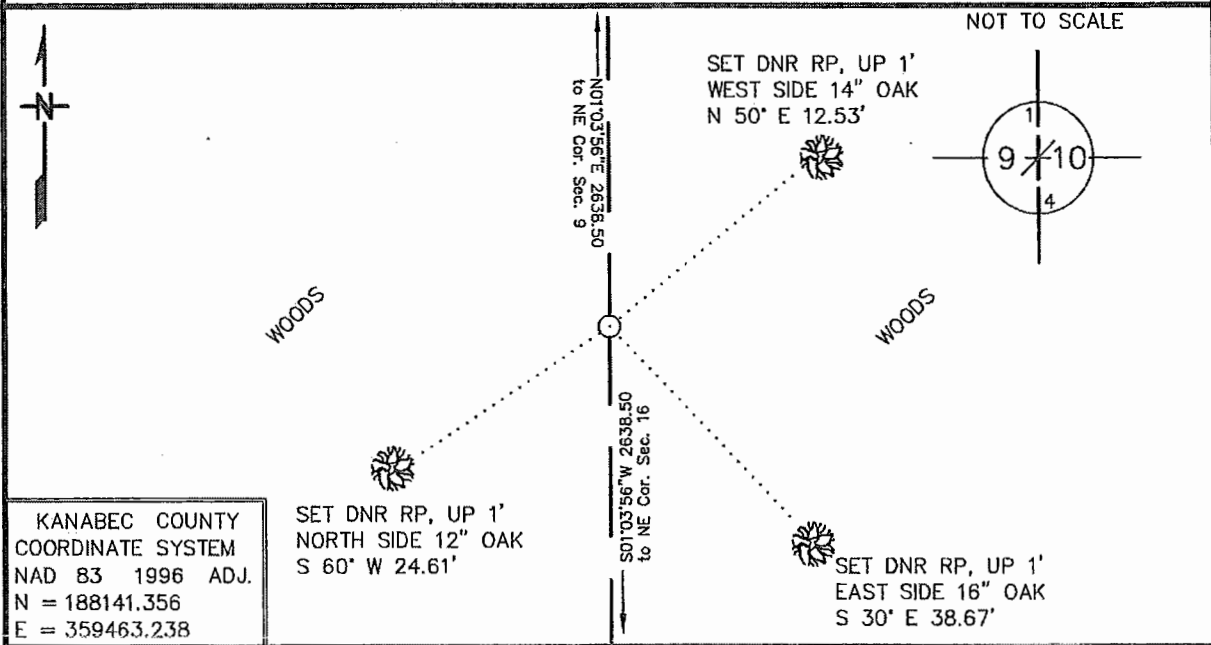
Index No. G-13

# CERTIFICATE OF LOCATION OF GOVERNMENT CORNER

EAST QUARTER Corner of Section 9, Township 40, Range 25  
4TH Principal Meridian, State of Minnesota, County of KANABEC

At the corner location shown on the sketch:

- On \_\_\_\_\_ found a \_\_\_\_\_  
DATE
- left monument as found,  lowered monument,  removed monument (explain)
- On 4/19/2017 Placed a 3/4" X 24" REBAR WITH CAP "MN DNR LS 47461"  
DATE



Statement of evidence for this corner location is on back of this page.

AMD JUNE 2017  
WMA09004

I hereby certify that this plan, specification, or report was prepared by me or under my direct supervision and that I am a duly Licensed Land Surveyor under the laws of the State of Minnesota.

SIGNATURE Robert A. Langner DATE 6/21/17 License Number 47461

STATEMENT OF EVIDENCE**East Quarter Corner of Section 9, Township 40 North, Range 25 West, 4<sup>th</sup> P.M.**

The Department of Natural Resources, Division of Lands and Minerals, contacted the following offices for information regarding this corner:

Kanabec County Recorder  
 Kanabec County Surveyor  
 Kanabec County Highway Department  
 Rud & Sons Land Surveying  
 Kroeschel Land Surveying  
 Bogart Peterson and Associates  
 Minnesota Historical Society  
 Minnesota Department of Transportation

1855

The US General Land Office field notes, on file with the Historical Society, show this corner 1 chain south of an alder and grass meadow and 3 chains south of a brook, and marked with a post and the following bearing trees:

Elm	14"	S 48 W	60 links
Elm	14"	S 15 E	20 links

No other information about this corner was found.

2014

In February, the DNR Survey Crew retraced the east line of Sections 4, 9, 16 and 21, locating GLO calls along the lines and other evidence of the section lines. No other evidence of the corner remained.

2016

In April, a search position for this corner was computed midway and on line between the northeast and southeast corners of Section 9. The DNR Survey Crew made another search for the corner and accessories but found nothing. The computed position was found to be in harmony with the GLO calls to the meadow and brook. After analysis, the computed position was accepted as the corner location. A  $\frac{3}{4}$  inch by 24 inch rebar with cap "MN DNR LS 47461" was set to mark the corner location.

For more information on our survey in this area, please contact the MN DNR, Division of Lands and Minerals, Survey Section, 1601 Minnesota Drive, Brainerd, MN 56401