

4025 091

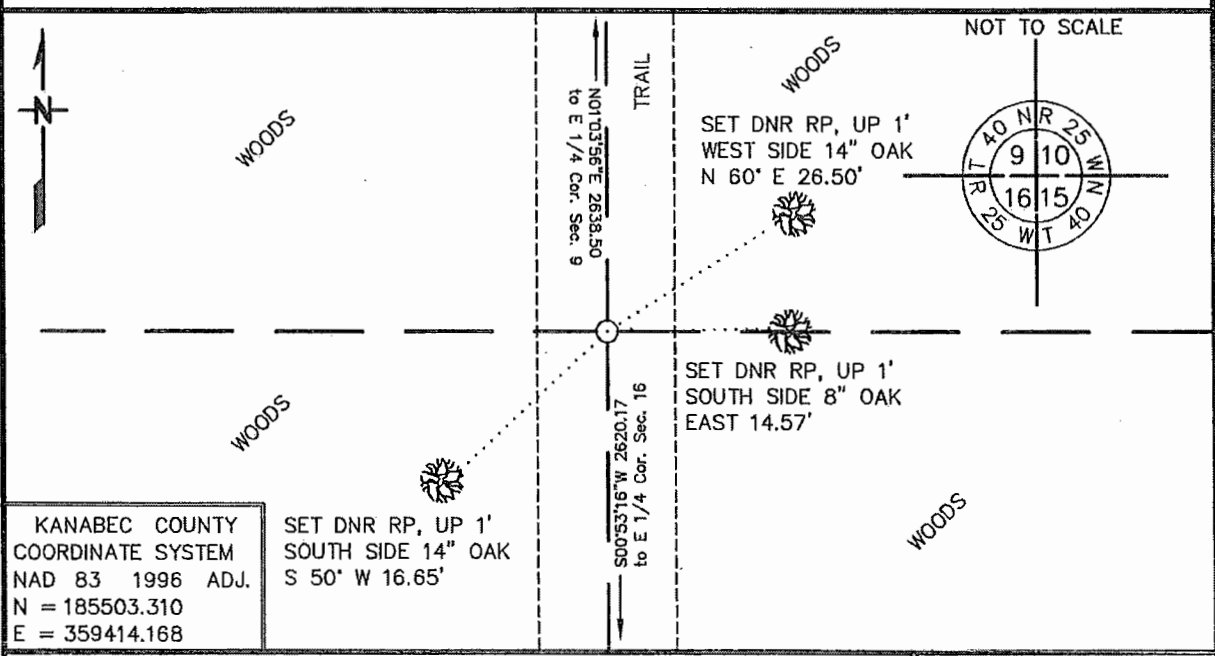
Index No. J-13

CERTIFICATE OF LOCATION OF GOVERNMENT CORNER

NORTHEAST Corner of Section 16, Township 40, Range 25
4TH Principal Meridian, State of Minnesota, County of KANABEC

At the corner location shown on the sketch:

- On _____ found a _____
DATE
- left monument as found, lowered monument, removed monument (explain)
- On 4/24/2017 Placed a 3/4" X 24" REBAR WITH CAP "MN DNR LS 47461"
DATE
IN CENTER LINE OF N-S TRAIL



KANABEC COUNTY
COORDINATE SYSTEM
NAD 83 1996 ADJ.
N = 185503.310
E = 359414.168

Statement of evidence for this corner location is on back of this page.

AMD JUNE 2017
WMA09004

I hereby certify that this plan, specification, or report was prepared by me or under my direct supervision and that I am a duly Licensed Land Surveyor under the laws of the State of Minnesota.

SIGNATURE *Robert A. Langner* DATE 6/21/17 License Number 47461
Robert A. Langner

STATEMENT OF EVIDENCE

Northeast Corner of Section 16, Township 40 North, Range 25 West, 4th P.M.

The Department of Natural Resources, Division of Lands and Minerals, contacted the following offices for information regarding this corner:

Kanabec County Recorder
 Kanabec County Surveyor
 Kanabec County Highway Department
 Rud & Sons Land Surveying
 Kroeschel Land Surveying
 Bogart Peterson and Associates
 Minnesota Historical Society
 Minnesota Department of Transportation

1855

The US General Land Office field notes, on file with the Historical Society, show this corner to be marked with a post and the following bearing trees:

W. Birch	9"	N 80 E	5 links
Sugar	7"	S 50 E	15 links
Sugar	12"	S 20 W	35 links
W. Birch	10"	N 48 W	40 links

1909

A road survey was performed along the east line of Section 16 by John Nelson. Notes indicate stones at the northeast and southeast corners of the section. A measurement of 5240.4 feet is shown for the east line of Section 16. *This information was found in Book A-1 on pages 25-27 in the Kanabec County Engineer's office.*

No other information about this corner was found.

2010

County Surveyor, Ernest Rud, created a certificate of location for the southeast corner of Section 16. Mr. Rud excavated the southeast corner location with a backhoe but did not find evidence of the stone. Mr. Rud placed a county monument at an obliterated position.

2014

In February, the DNR Survey Crew retraced the east line of Section 16, locating GLO calls along the line and other evidence of the section line. The survey crew located the southeast corner of Section 16 and accepted Mr. Rud's position. Barb wire fence remains were located in the vicinity of the east quarter corner of Section 16. A dozed trail also runs in the vicinity of this line. A thorough search was made for the stone but it was not recovered. No other evidence of the corner remained.

2016

In April, the DNR Survey Crew made another search for the stone monument but found nothing. After analysis, the fence line remains and 1909 survey measurements were considered the best available evidence of the east line of Section 16. The northeast corner of Section 16 was established at an obliterated position along the fence line remains and at the 1909 distance from the southeast corner of Section 16. The position falls in the center of the dozed trail. The computed corner is in harmony with the GLO distance of 4 chains west to the swamp. A ¾ inch by 24 inch rebar with cap "MN DNR LS 47461" was set to mark the corner location.

For more information on our survey in this area, please contact the MN DNR, Division of Lands and Minerals, Survey Section, 1601 Minnesota Drive, Brainerd, MN 56401