

OFFICE OF THE COUNTY RECORDER

County of \_\_\_\_\_

I hereby certify that this document was filed in the County Recorder's office at \_\_\_\_\_ M. on the \_\_\_\_\_ day of \_\_\_\_\_ A.D., 20\_\_\_\_\_

County Recorder \_\_\_\_\_

BY \_\_\_\_\_ Deputy

DOCUMENT NO. \_\_\_\_\_

4025087

Index No. P-13

CERTIFICATE OF LOCATION OF GOVERNMENT CORNER

EAST QUARTER Corner of Section 21, Township 40, Range 25

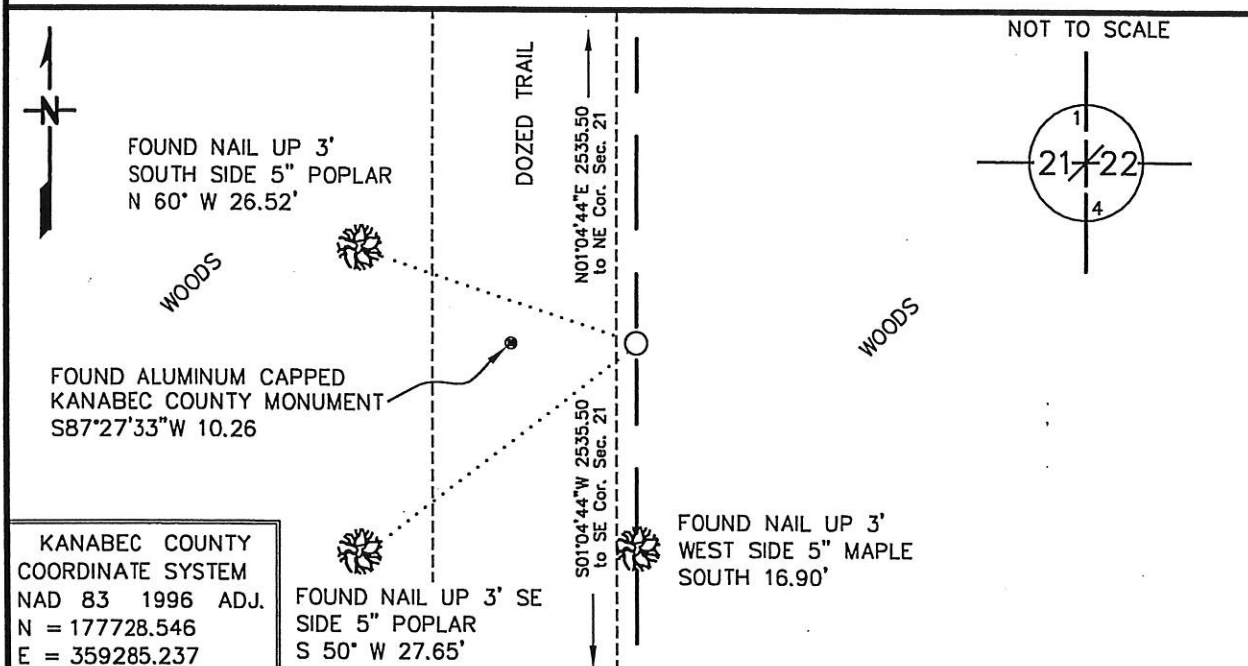
4TH Principal Meridian, State of Minnesota, County of KANABEC

At the corner location shown on the sketch:

On 2/10/2014 found a KANABEC COUNTY MONUMENT (NOT ACCEPTED)

left monument as found, lowered monument, removed monument (explain)

On 2/10/2014 Placed a 3/4" X 24" REBAR WITH CAP "MN DNR LS 47461"



KANABEC COUNTY  
 COORDINATE SYSTEM  
 NAD 83 1996 ADJ.  
 N = 177728.546  
 E = 359285.237

Statement of evidence for this corner location is on back of this page.

RAL JULY 2015  
WMA09004

I hereby certify that this plan, specification, or report was prepared by me or under my direct supervision and that I am a duly Licensed Land Surveyor under the laws of the State of Minnesota.

SIGNATURE Robert A. Langner

DATE 10/1/15

License Number 47461

STATEMENT OF EVIDENCE**East Quarter Corner of Section 21, Township 40 North, Range 25 West, 4<sup>th</sup> P.M.**

The Department of Natural Resources, Division of Lands and Minerals, contacted the following offices for information regarding this corner:

Kanabec County Recorder  
Kanabec County Surveyor  
Kanabec County Highway Department  
Bogart Peterson and Associates  
Minnesota Historical Society  
Minnesota Department of Transportation

1855

The US General Land Office field notes, on file with the Historical Society, show this corner to be marked with a post and bearing trees.

1909

A road survey was performed along the east line of Section 21 by John Nelson. Notes indicate the government corners were found at the northeast and southeast corners of the section where stones were placed. A measurement of 5070.8 feet is shown for the east line of Section 21. For this quarter corner, Mr. Nelson set a stake on line and midway between the found section corners. *This information was found in Book A-1 on pages 25-27 in the Kanabec County Engineer's office.*

1925

Section Corner Record by Geo. H. Jenks, County Surveyor, indicates a stone marked with a "+" at the southeast corner of Section 21. *This information was found on page 106 of Book 1 at the Kanabec County Highway Department.*

1951

The Department of Natural Resources surveyed the south boundary of the Mille Lacs Wildlife Management Area in Kanabec County. The sandstone at the southeast section corner was recovered. This corner was not measured to during the course of this survey. *This information is on file with the Department of Natural Resources Survey Unit.*

2010

County Surveyor, Ernest Rud, created certificates of location for the northeast, east quarter and southeast corners of Section 21. Mr. Rud placed a county monument at the lost position for the quarter corner.

2014

In February, the DNR Survey Crew retraced the east line of Section 21. The survey crew located the northeast corner of Section 21 and accepted Mr. Rud's position. The county monument set at the southeast corner was also recovered, but after a thorough search, the historic sandstone monument was recovered about 20.8 feet east of the county monument set by Mr. Rud. The DNR accepted the sandstone as the true southeast section corner.

The survey crew located the county monument placed for the quarter corner. No evidence of the original corner could be recovered. After analysis, the county monument was not accepted as the corner location. The quarter corner location was computed midway and online between the county monument at the northeast corner and found sandstone monument at the southeast corner of the section. A ¾" x 24" rebar with cap #47461 was set to mark the corner location.

For more information on our survey in this area, please contact the MN DNR, Division of Lands and Minerals, Survey Section, 1601 Minnesota Drive, Brainerd, MN 56401